

HORIZONTAL  
MULTISTAGE PUMPS  
- 50Hz





## Vision

To be eminent global brand providing complete, innovative, invincible quality pumping paraphernalia under one roof.

## Mission

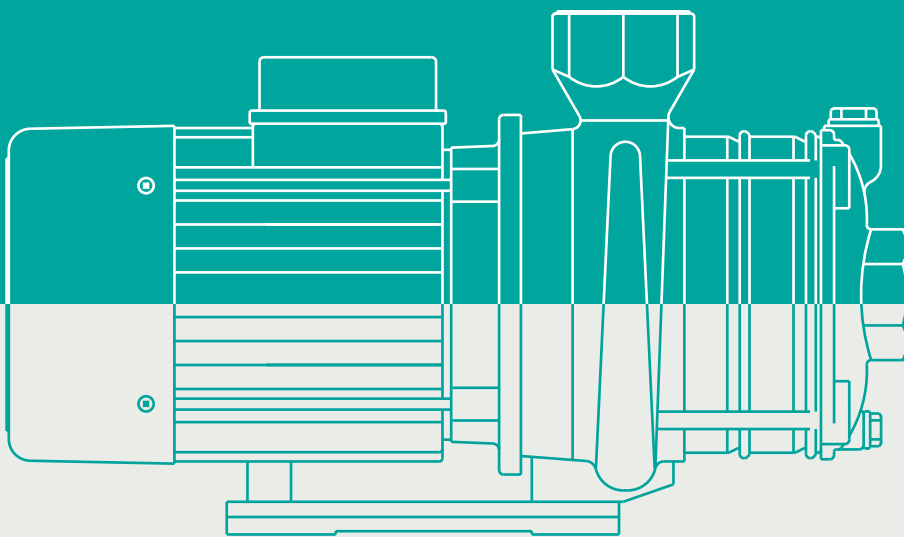
We are committed to manufacture products complying with the best quality standards of the world.

We strive to create an environment that nurtures youth and nourishes the experienced.

On the bedrock of ethics, Duke is instituted by amalgamating the best practices & technologies of the world.

## Values

The values that guide us are Trust, Ethics, Integrity, Discipline and Performance



❖ Horizontal  
Multistage Pumps

---

DMH Series - 50Hz

Duke's **DMH - Series** pumps are Horizontal Multistage Pumps, designed for clear liquid, high pressure applications. These Pumps are of centrifugal types, accommodating mainly Radial flow impellers according to the required Head & Flow. The Horizontal construction and compact design result in space saving. The pump is driven with energy efficient IE1, IE2, IE3 motors. The motor winding designs are compactible to VFD operation and makes preferable to use it with the latest control systems. These pumps are applicable for both normal temperature & high temperature applications with appropriate change in the MoC of critical spare parts like mechanical seal etc. The precise design, materials combination, manufacturing process and stringent quality assurance procedures ensure high quality performance and durability of the pump. These pumps are available in Cast Iron, SS 304 & SS 316 constructions, which are called as DMHC, DMHS and DMHN constructions respectively and the SS 304 fabricated doom type construction is called as DMHD.

**Applications**

- ◆ Domestic Pressure Boosting Systems
- ◆ Fountain
- ◆ Gardening
- ◆ Car Washing

**Features**

- ◆ Optimized Design
- ◆ Compactible to VFD operations
- ◆ Different types of MoC
- ◆ Normal & High temperature designs



**Curve Conditions**

Hydraulic Performances of the pumps are same for all types Materials of constructions [DMHC, DMHS, DMHN & DMHD constructions] | The given performances are for the clear water of specific gravity 1 | The given the performances are for the ideal conditions the actual performance may vary according the field parameters | The performances are applicable for the nominal speed of 2900rpm | The thick lines in the curves indicates the recommended operative region and the thin lines are non-operative regions | The Group performance curves are just an indicative and to locate the tentative family curve | Refer the individual curves for prompt selection of models.

In the view of our continuous developments the given information / description / specifications / illustrations are subject to change without prior notice.

## HORIZONTAL MULTISTAGE CENTRIFUGAL PUMPS DMH SERIES

### Technical Specifications

Power Range	0.37 - 4 kW / 0.5 - 5.5 HP
Version	1Ph - 230V, 50Hz AC
	3Ph - 380 -415V, 50Hz AC
Speed	2900 rpm
Protection	IP 55
Insulation Class	F Class
Duty	S1 (continuous)
Direction of Rotation	Clockwise viewed from driving end
Sealing	Mechanical Seal
Max. Liquid Temperature	Std.: -15 to +70°C, High Temp.: upto 104°C
Max. Ambient Temperature	50°C
Max. Operating Pressure	10 Bar
Flow Range	upto 28m <sup>3</sup> /h
Head Range	upto 65m

**Liquid Characteristics** : Applicable for Clear, non-aggressive liquids free from solids / foreign particles

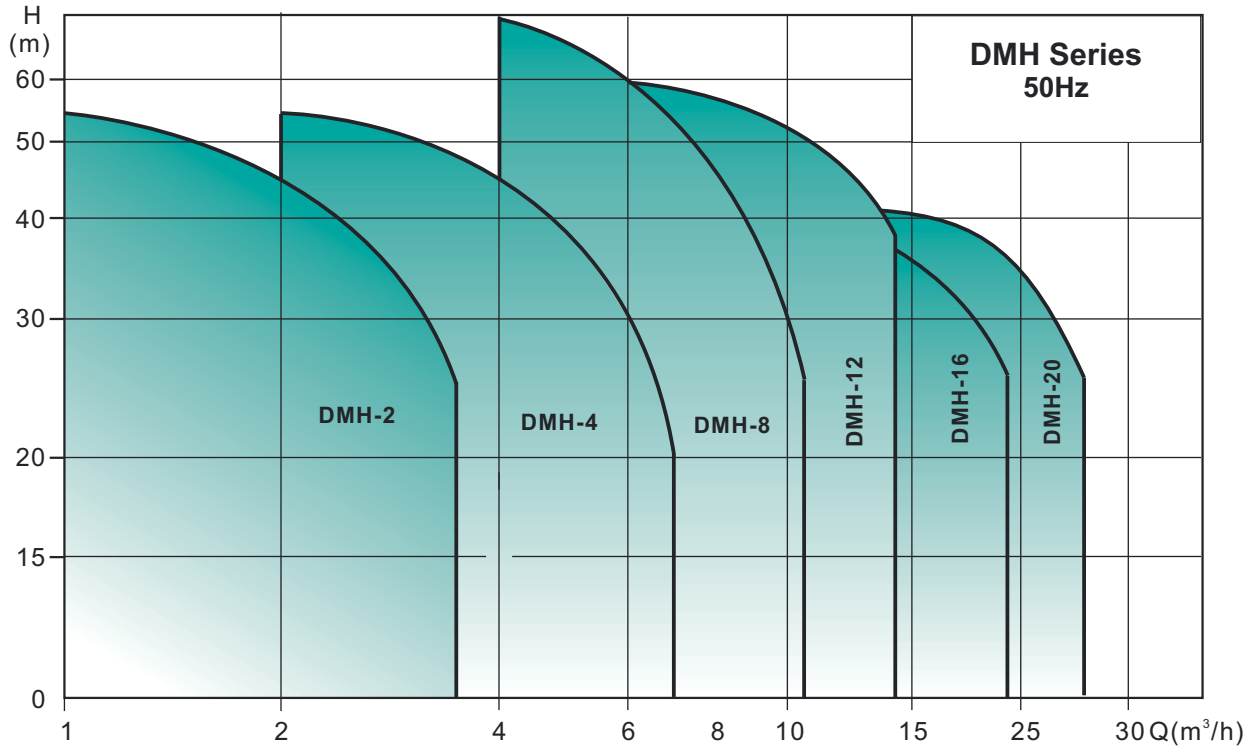
### Model Identification Code

**X X X X - (S) X / X X B - X X X**

D - DUKE	<p><b>Applicable only for high Eff. Motors</b> 2 = IE2 Motor 3 = IE3 Motor</p> <p><b>Voltage (Except for 1Ph 230V &amp; 3Ph 380V)</b> D = 220V, K = 415V, N = 525V</p> <p><b>Method of Starting</b> S: 1Ph - CSCR T: 3Ph - D.O.L D: 3Ph - S.D.</p> <p>Applicable only for high flow models</p>
M - Multistage Pump	
H - Horizontal	
<b>Materials of Construction</b>	
<b>C / S / N / D</b> (Refer Material of Construction Table for detailed MoC)	
<b>Applicable only for 60Hz</b>	
<b>Rated Flow in m<sup>3</sup>/h</b> 1 - 1m <sup>3</sup> /h, 32 - 32m <sup>3</sup> /h	
Number of Stages x 10	
20 - 2 stage, 40 - 4 stage 35 - 4 stage with trimmed impeller	

In the view of our continuous developments the given information / description / specifications / illustrations are subject to change without prior notice.

**Group Performance Curves**

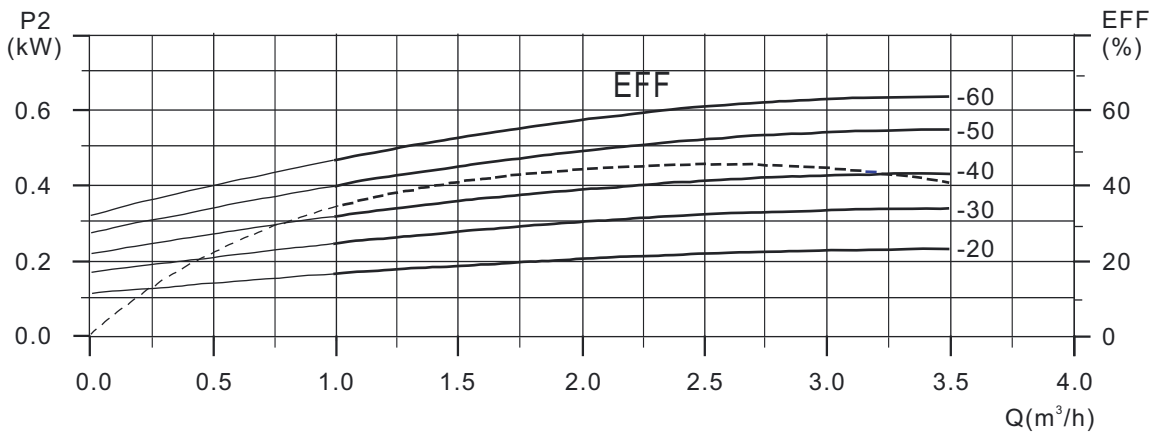
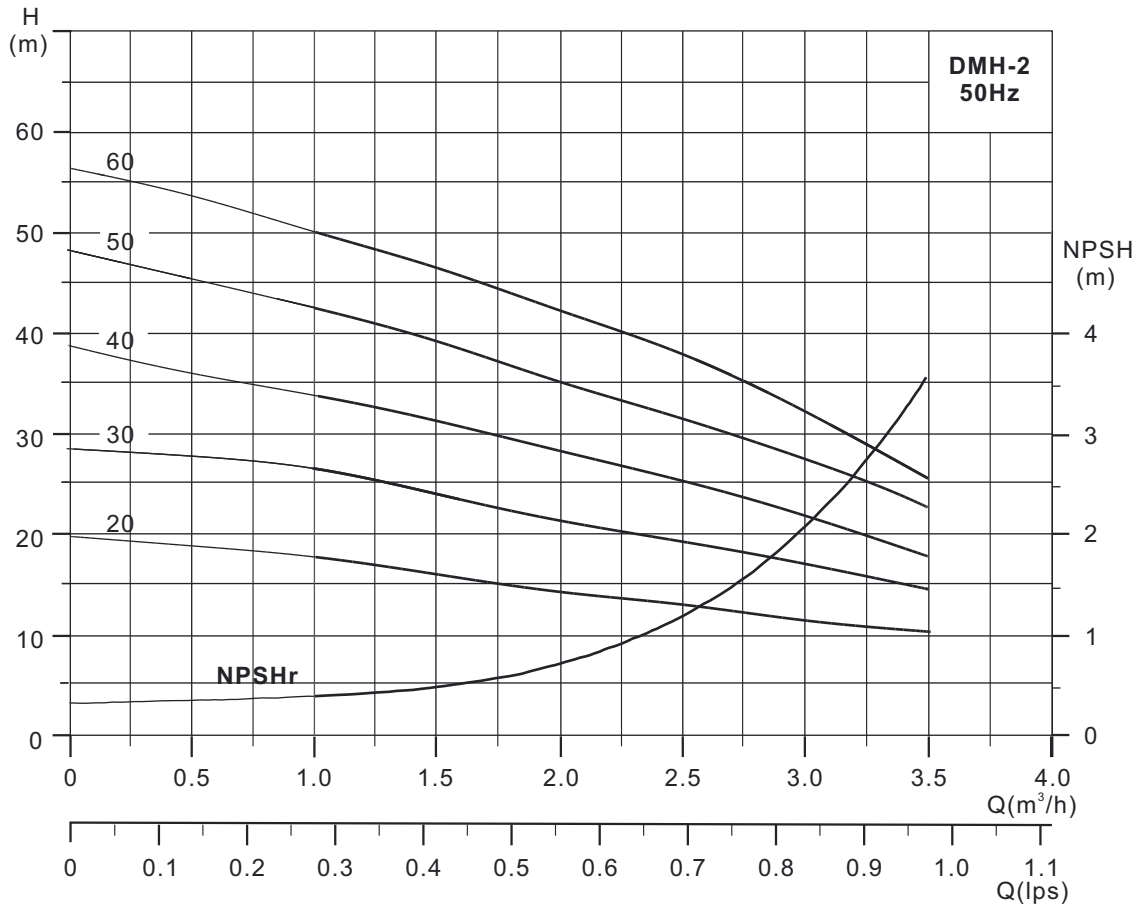


**Materials Of Construction**

Part Name	DMHC	DMHS	DMHN	DMHD
Pump Casing	Cast Iron	Casted SS 304	Casted SS 316	SS 304
Pump Head	Cast Iron	Casted SS 304	Casted SS 316	-
Impeller	SS 304	SS 304	SS 316	SS 304
Diffuser Casing	SS 304	SS 304	SS 316	SS 304
Pump Shaft	SS 304 / 431	SS 304 / 431	SS 316 / 329	SS 304 / 431
Bracket	Aluminum Alloy	Aluminum Alloy	Aluminum Alloy	Aluminum Alloy
Mechanical Seal	Carbon / Ceramic	Carbon / Ceramic	Carbon / Ceramic	Carbon / Ceramic
Pump Base	M.S / C.I.	M.S / C.I.	M.S / C.I.	M.S / C.I.
Sleeve	SS 304	SS 304	SS 316	SS 304
Clamp Holder	SS 304	-	-	SS 304
Clamp Plate	SS 304	-	-	SS 304

In the view of our continuous developments the given information / description / specifications / illustrations are subject to change without prior notice.

## DMH-2



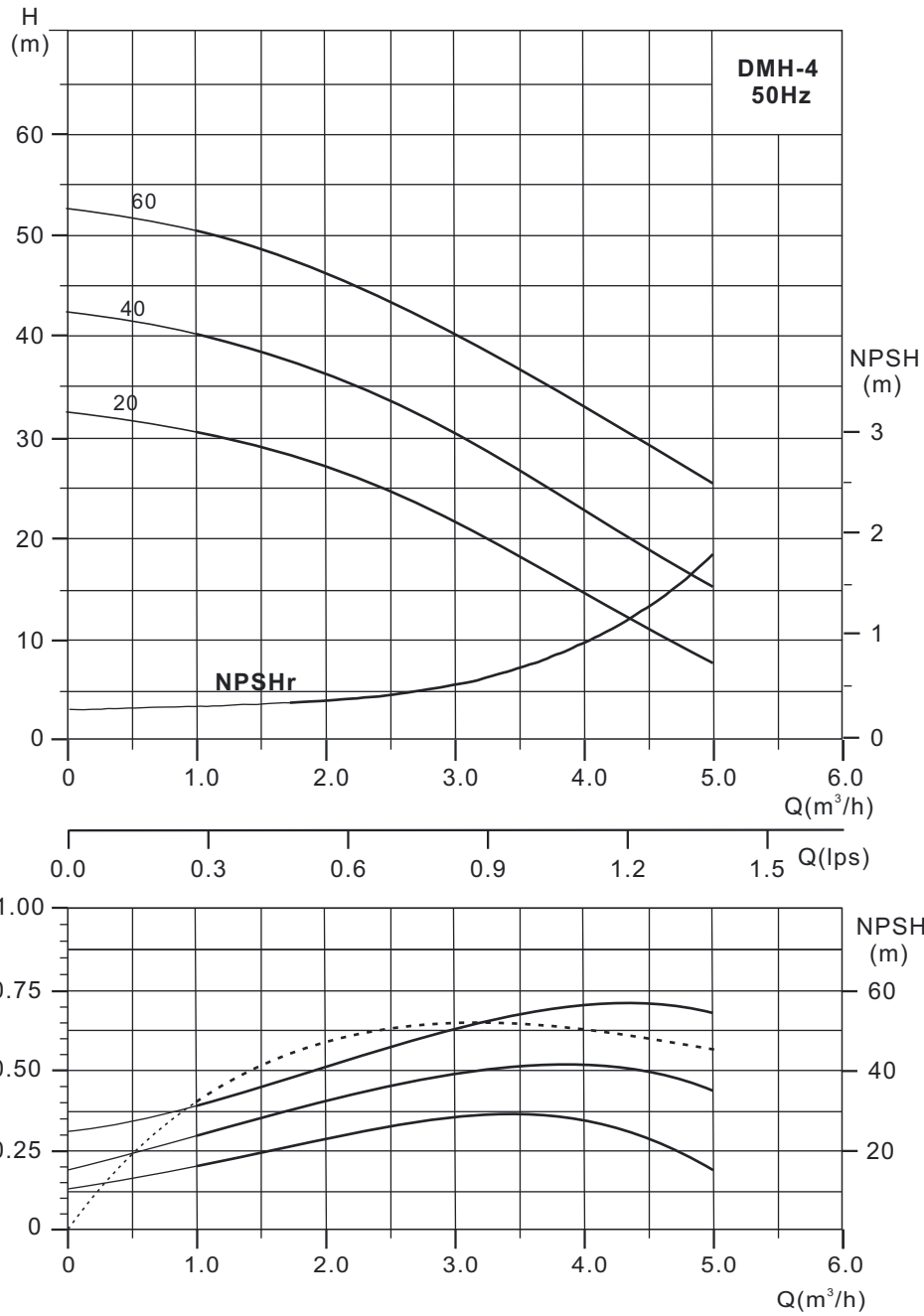
### Performance Table

Model		Motor Power P <sub>2</sub> (kW)	Q (m <sup>3</sup> /h)	1.0	1.5	2.0	2.5	3.0	3.5
Single Phase	Three Phase								
DMH-2/20S	DMH-2/20T	0.37	H (m)	18	16	14	13	11	10
DMH-2/30S	DMH-2/30T	0.37		27	24	21	20	17	14
DMH-2/40S	DMH-2/40T	0.55		35	32	28	26	23	17
DMH-2/50S	DMH-2/50T	0.55		43	40	35	33	28	22
DMH-2/60S	DMH-2/60T	0.75		50	48	42	38	32	25

In the view of our continuous developments the given information / description / specifications / illustrations are subject to change without prior notice.



## DMH-4

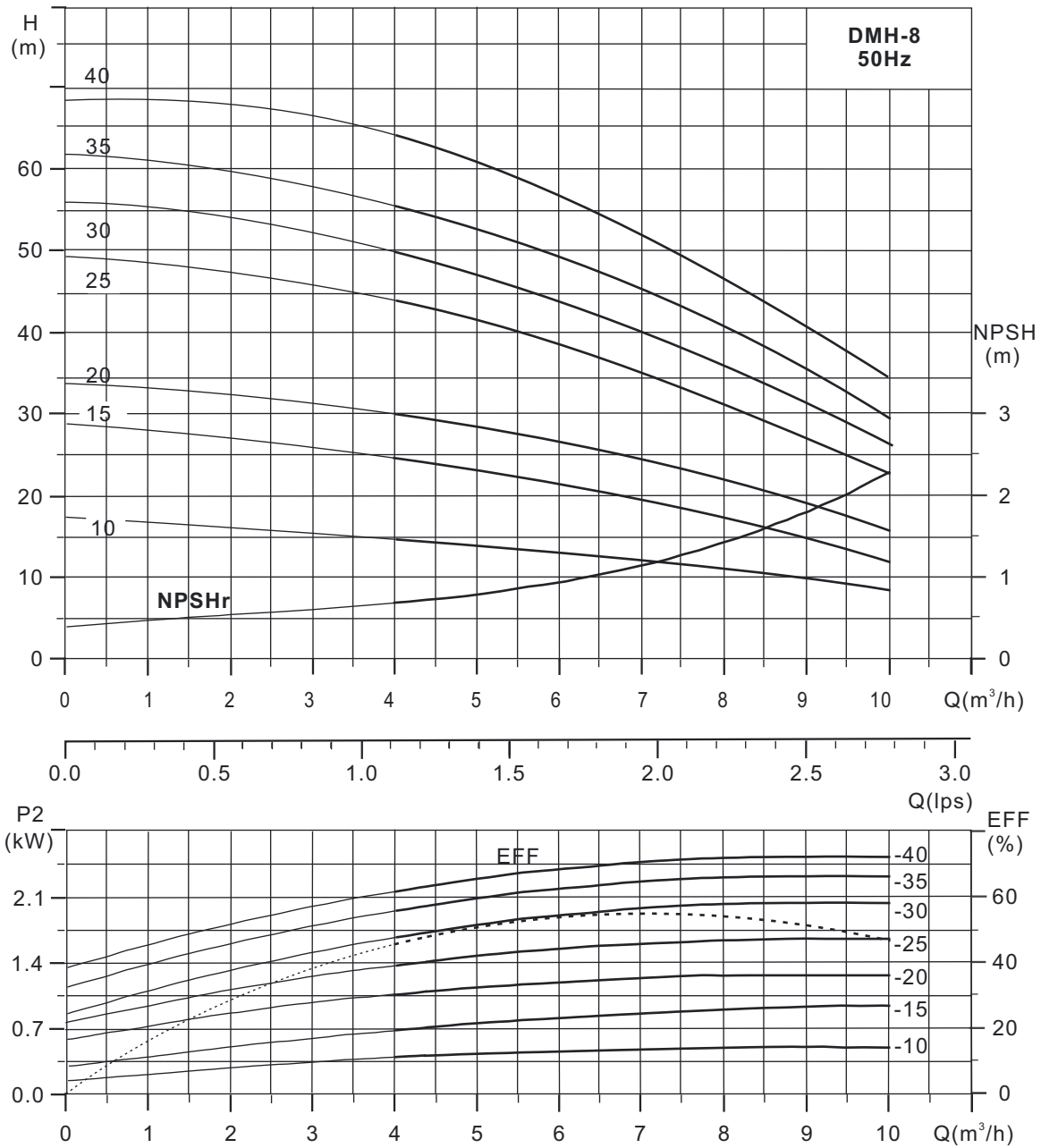


### Performance Table

Model		Motor Power P <sub>2</sub> (kW)	Q (m³/h)	0	1	2	3	4	5
Single Phase	Three Phase								
DMH-4/20S	DMH-4/20T	0.55	H (m)	32	28	22	18	13	7
DMH-4/40S	DMH-4/40T	0.75		40	37	34	29	23	16
DMH-4/60S	DMH-4/60T	1.1		50	47	44	37	31	24

In the view of our continuous developments the given information / description / specifications / illustrations are subject to change without prior notice.

## DMH-8

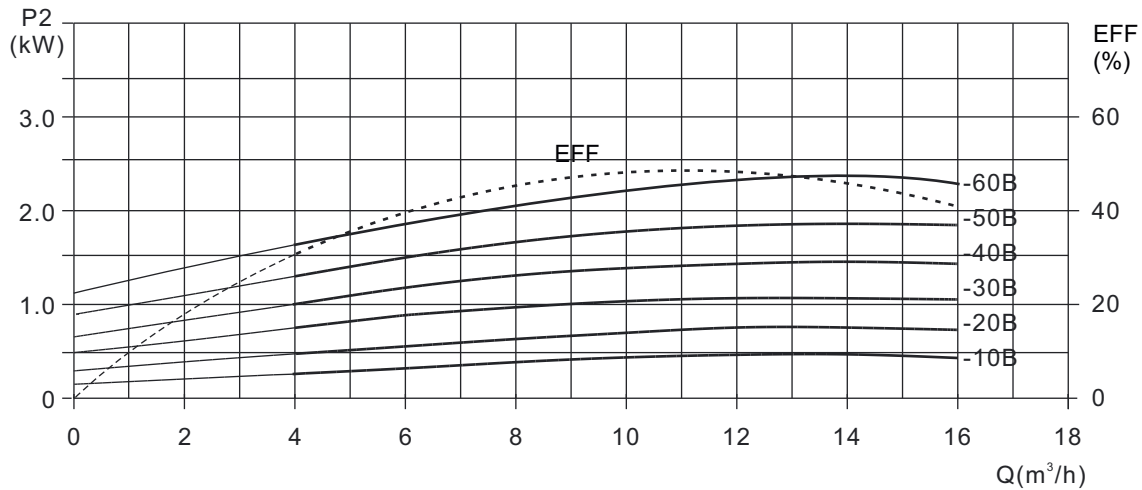
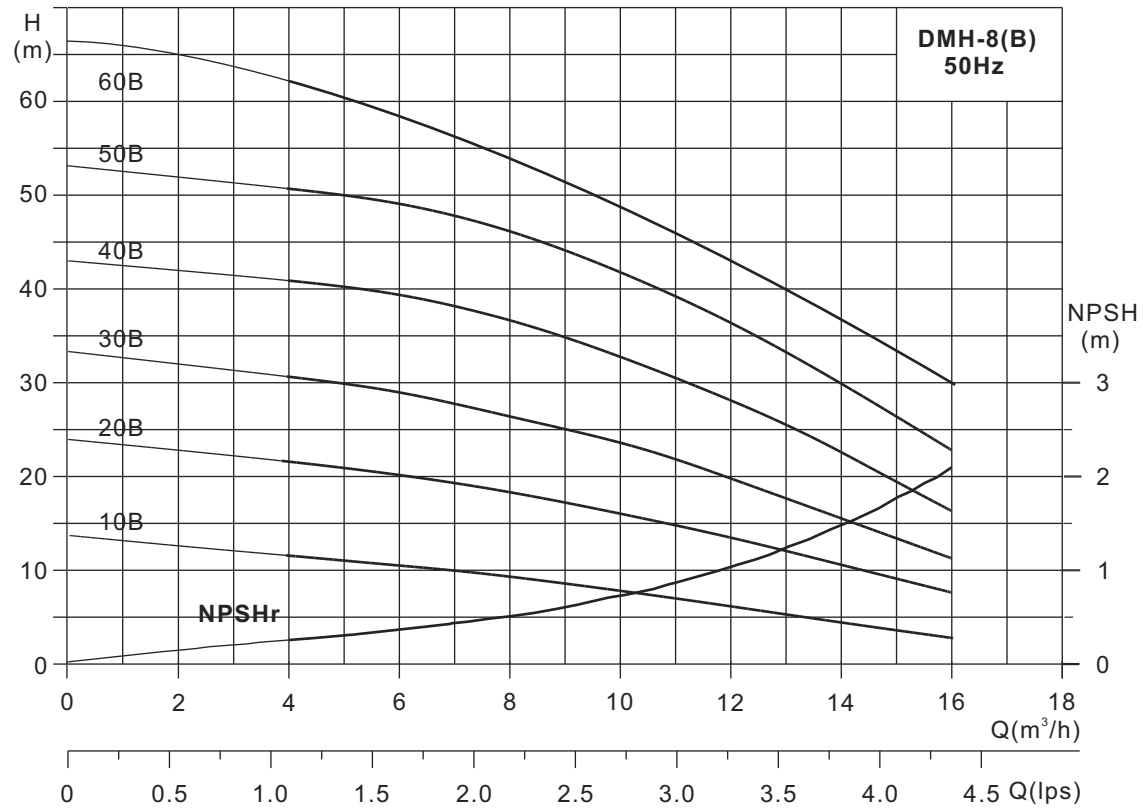


### Performance Table

Model		Motor Power P <sub>2</sub> (kW)	Q (m³/h)	4.0	5.0	6.0	7.0	8.0	9.0	10
Single Phase	Three Phase									
DMH-8/10S	DMH-8/10T	0.55	H (m)	15	14	13	12.5	12	9	8
DMH-8/15S	DMH-8/15T	0.75		25	23	22	21	20	14	12
DMH-8/20S	DMH-8/20T	1.0		32	29	27	25	24	21	17
DMH-8/25S	DMH-8/25T	1.5		43	40	38	34	27	25	20
DMH-8/30S	DMH-8/30T	1.85		50	46	44	40	36	30	26
DMH-8/35S	DMH-8/35T	2.2		56	51	48	44	43	35	28
DMH-8/40S	DMH-8/40T	2.2		64	58	57	50	48	42	34

In the view of our continuous developments the given information / description / specifications / illustrations are subject to change without prior notice.

## DMH-8(B)

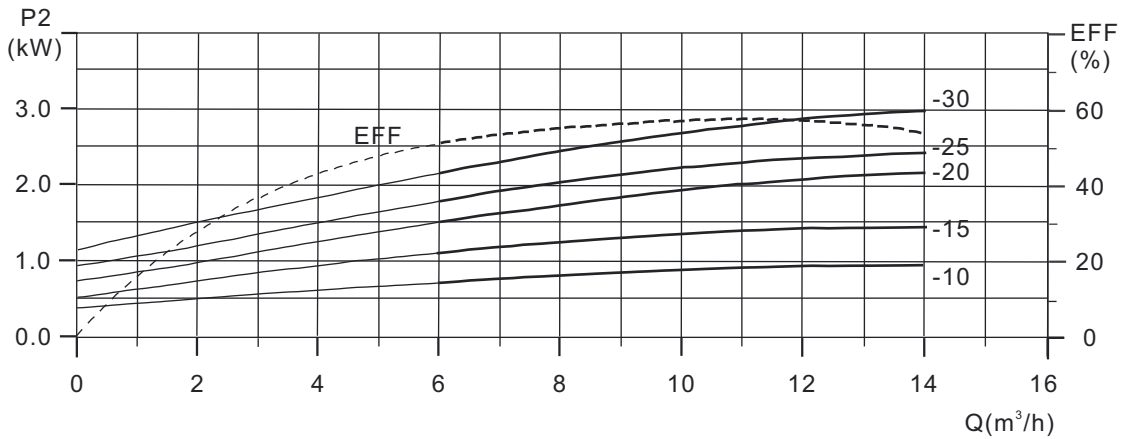
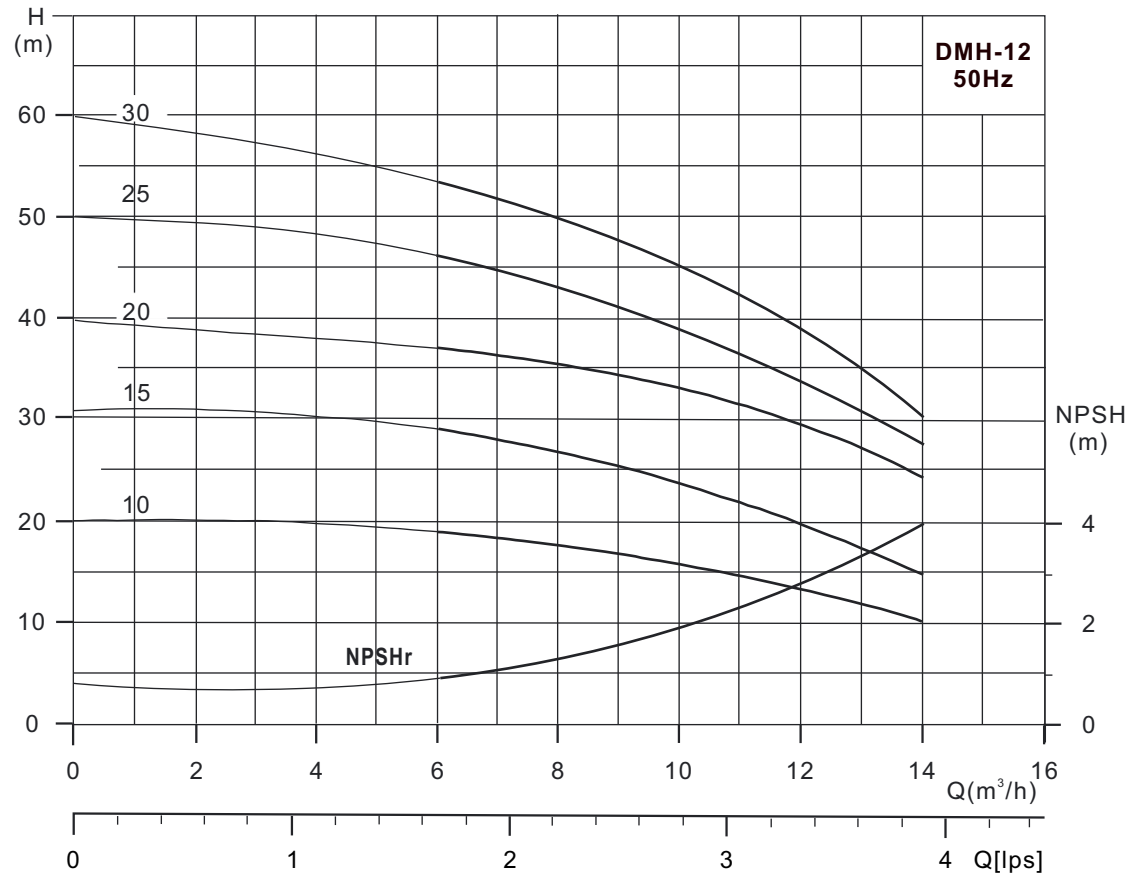


### Performance Table

Model		Motor Power P <sub>2</sub> (kW)	Q (m <sup>3</sup> /h)	Q (m <sup>3</sup> /h)						
Single Phase	Three Phase			4.0	6.0	8.0	10	12	14	16
DMH-8/10BS	DMH-8/10BT	0.55	H (m)	11	10	9	8	7	6	5
DMH-8/20BS	DMH-8/20BT	0.75		22	20	19	18	13	11	8
DMH-8/30BS	DMH-8/30BT	1.1		31	29	26	24	20	16	11
DMH-8/40BS	DMH-8/40BT	1.5		41	39	37	33	28	23	17
DMH-8/50BS	DMH-8/50BT	2.2		51	49	46.5	42	37	30	23
	DMH-8/60BT	3.0		62	58	52	48	42	36	30

In the view of our continuous developments the given information / description / specifications / illustrations are subject to change without prior notice.

## DMH-12

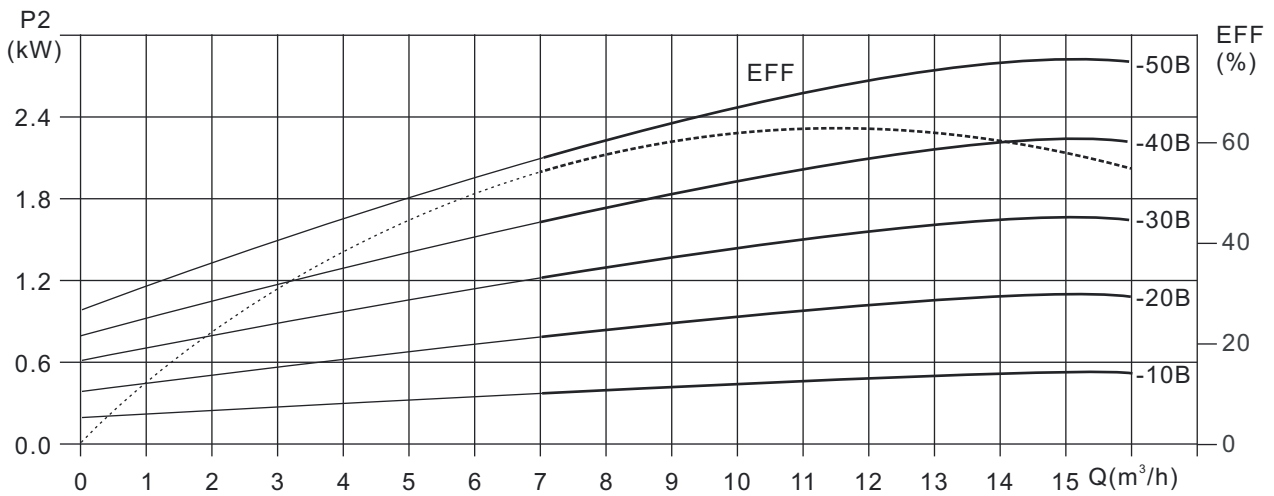
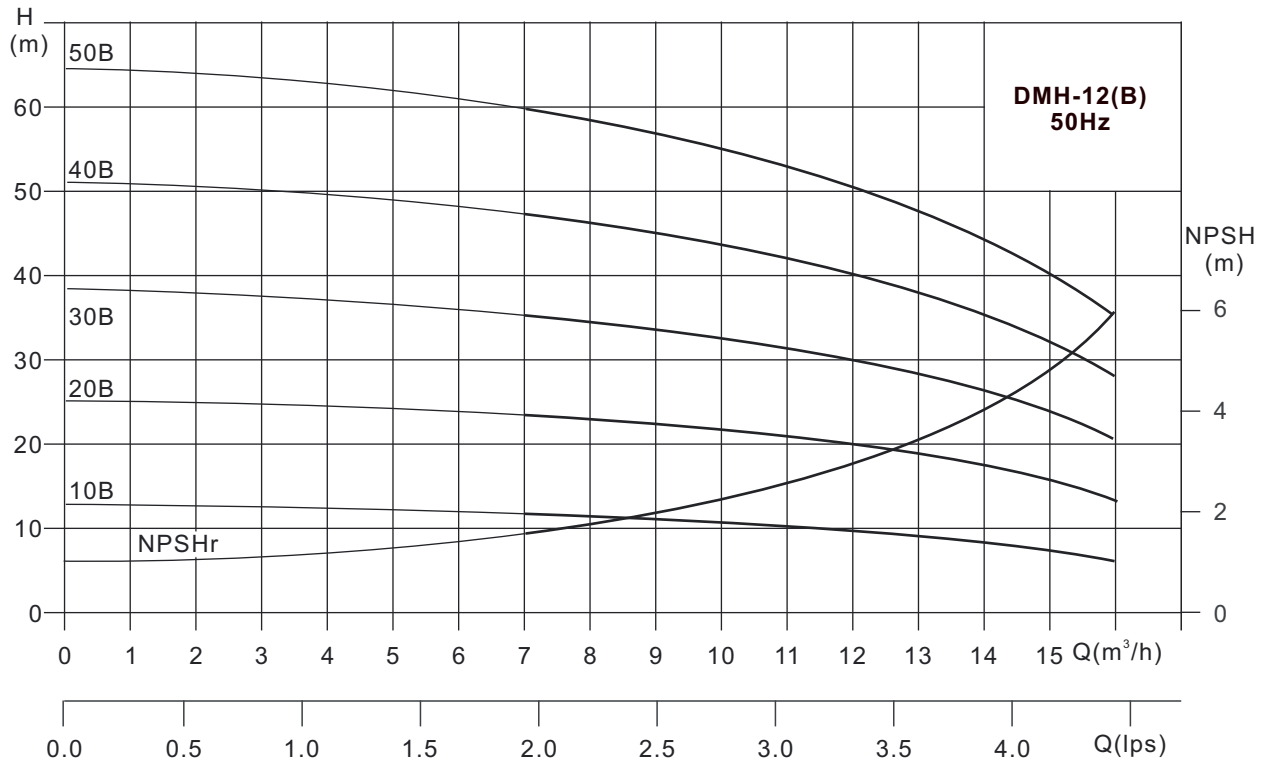


### Performance Table

Model		Motor Power P <sub>2</sub> (kW)	Q (m³/h)	6.0	7.0	8.0	9.0	10	11	12	13	14
Single Phase	Three Phase			H (m)								
DMH-12/10S	DMH-12/10T	1.0		19	18	17.5	16	15.5	14	13	12	11
DMH-12/15S	DMH-12/15T	1.5		28	27	26	25	24	22	20	18	15
DMH-12/20S	DMH-12/20T	1.85		38	36	35	32	31	29	28	24	20
DMH-12/25S	DMH-12/25T	2.2		47	45	43	42	39	36	34	31	27
	DMH-12/30T	3.0		54	52	50	48	45	42	39	35	30

In the view of our continuous developments the given information / description / specifications / illustrations are subject to change without prior notice.

## DMH-12 (B)

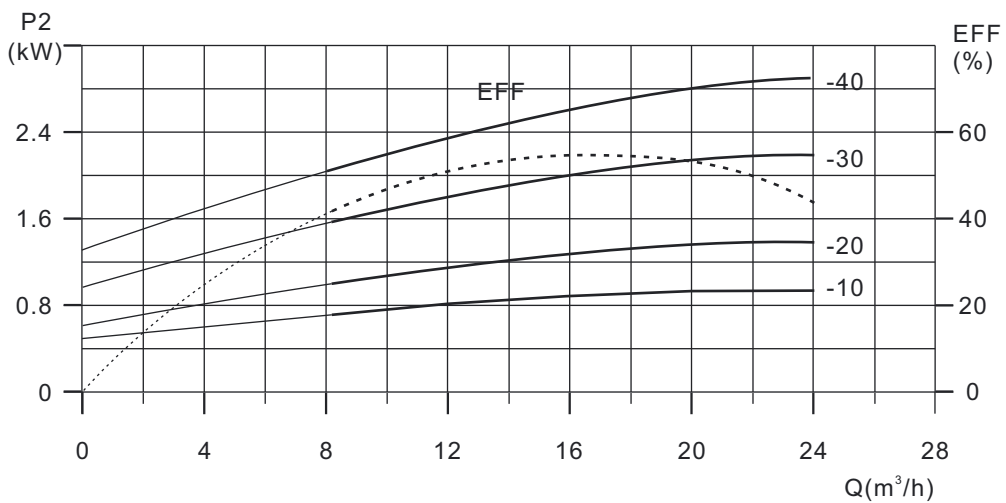
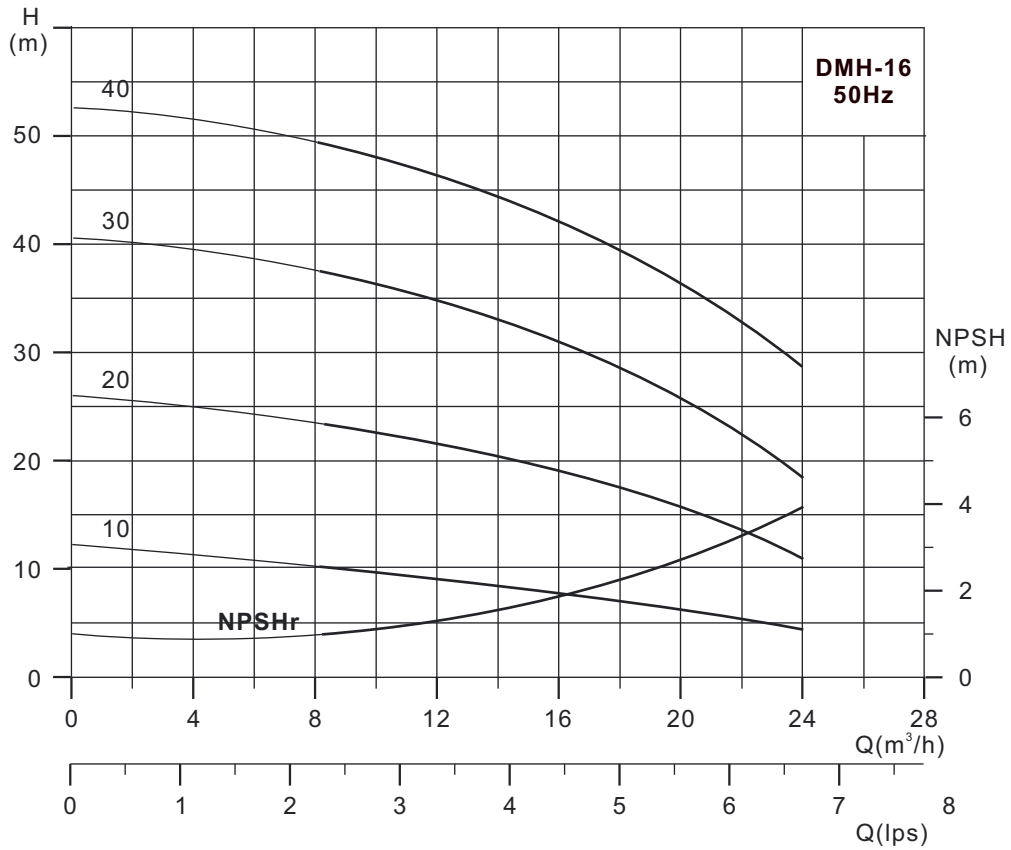


### Performance Table

Model		Motor Power P <sub>2</sub> (kW)	Q (m³/h)	H (m)											
Single Phase	Three Phase			7.0	8.0	9.0	10	11	12	13	14	15	16		
DMH-12/10BS	DMH-12/10BT	0.75		12	11.5	11	10.5	10	9.5	9	8	7	6		
DMH-12/20BS	DMH-12/20BT	1.1		23	22.5	22	21	20	19	18	17	16	13		
DMH-12/30BS	DMH-12/30BT	1.85		35	34	33	32	31	30	28	26	24	20		
DMH-12/40BS	DMH-12/40BT	2.2		47	46	45	44	42	40	38	35	32	28		
	DMH-12/50BT	3.0		60	58	57	55	53	50	47	44	40	35		

In the view of our continuous developments the given information / description / specifications / illustrations are subject to change without prior notice.

## DMH-16

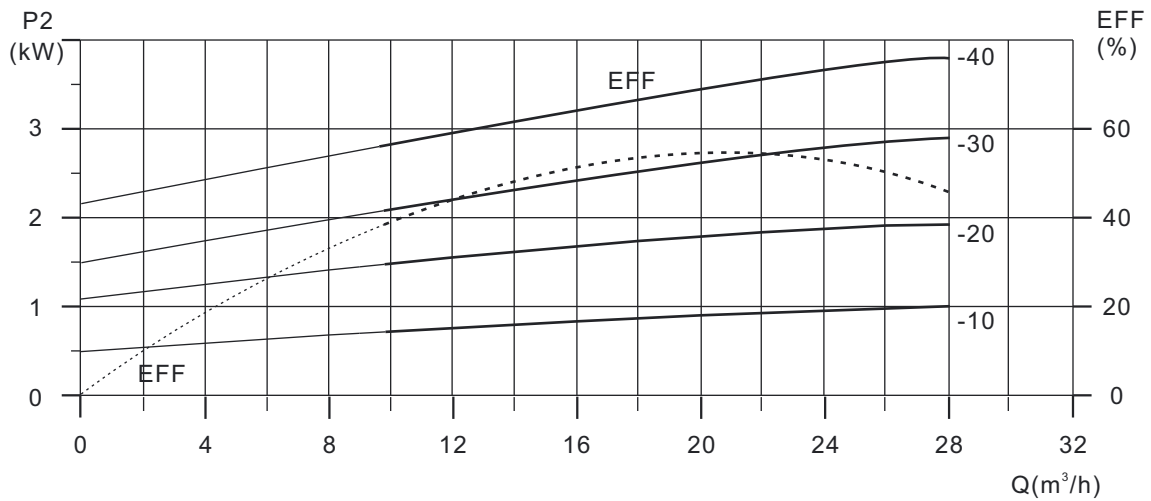
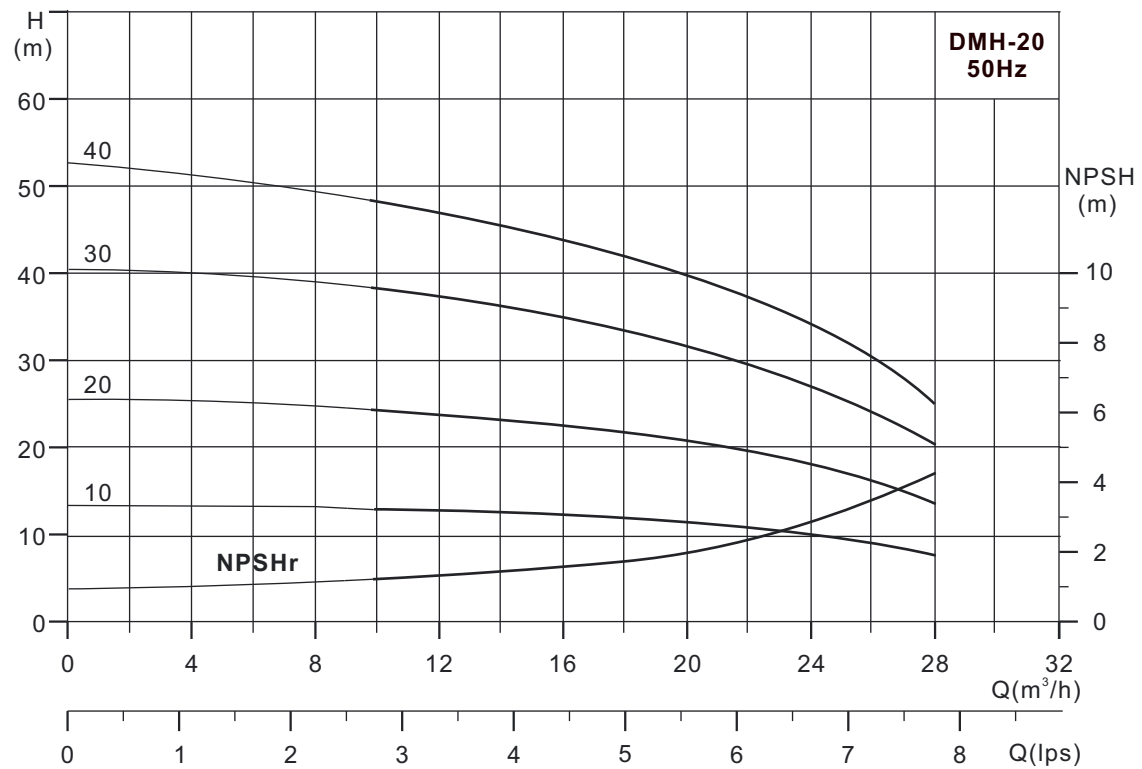


### Performance Table

Model		Motor Power P <sub>2</sub> (kW)	Q (m³/h)	8	10	12	14	16	18	20	22	24
Single Phase	Three Phase			H (m)								
DMH-16/10S	DMH-16/10T	1.0		12	11.5	11	10.5	10	9	8	7	6
DMH-16/20S	DMH-16/20T	1.5		24	23	22	21	20	19	16	14	12
DMH-16/30S	DMH-16/30T	2.2		38	36	34	33	30	28	26	23	20
	DMH-16/40T	3.0		50	48	46	44	40	38	36	32	28

In the view of our continuous developments the given information / description / specifications / illustrations are subject to change without prior notice.

## DMH-20



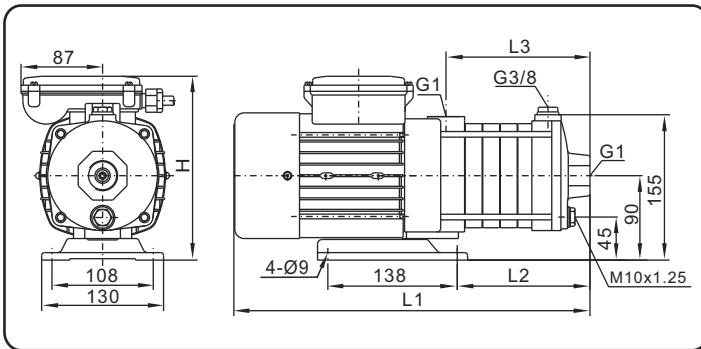
### Performance Table

Model		Motor Power P <sub>2</sub> (kW)	Q (m <sup>3</sup> /h)	H (m)											
Single Phase	Three Phase			10	12	14	16	18	20	22	24	26	28		
DMH-20/10S	DMH-20/10T	1.0	H (m)	13	12.5	12	11.5	11	10.5	10	9	8.5	7.5		
DMH-20/20S	DMH-20/20T	1.85		25	24	23	22	21	20	18	16	14	12		
	DMH-20/30T	3.0		39	38	36	35	33	31.5	30	27	24	21		
	DMH-20/40T	4.0		50	48	46	44	42	40	36	32	28	24		

In the view of our continuous developments the given information / description / specifications / illustrations are subject to change without prior notice.

# Dimensional Tables

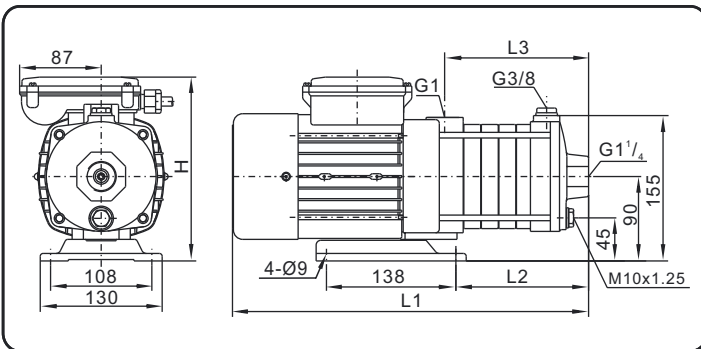
## DMHC-2



Suc. x Del.: 1" x 1"

Model	Dimensions (mm)								Weight (kg)
	Single Phase				Three Phase				
	L1	L2	L3	H	L1	L2	L3	H	
DMHC-2/20S/T	326	70	104	198	326	70	104	194	8.5
DMHC-2/30S/T	344	88	122	198	344	88	122	194	9
DMHC-2/40S/T	362	106	140	198	362	106	140	194	9.5
DMHC-2/50S/T	380	124	158	198	380	124	158	194	10
DMHC-2/60S/T	398	142	176	198	398	142	176	194	10.5

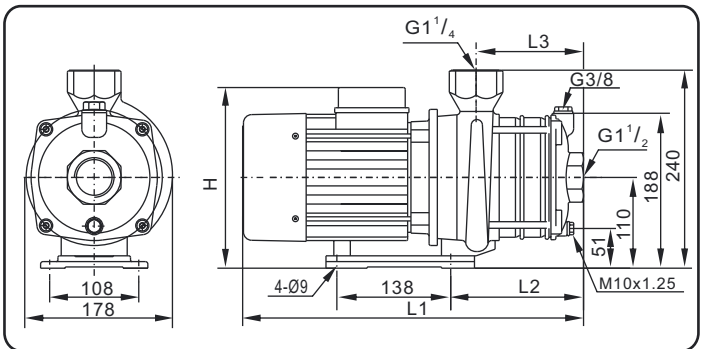
## DMHC-4



Suc. x Del.: 1" x 1"

Model	Dimensions (mm)								*Weight (kg)
	Single Phase				Three Phase				
	L1	L2	L3	H	L1	L2	L3	H	
DMHC-4/20S/T	335	79	113	198	335	79	113	194	9
DMHC-4/30S/T	362	106	140	198	362	106	140	194	10
DMHC-4/40S/T	389	133	167	198	389	133	167	194	10.5
DMHC-4/50S/T	416	160	194	198	416	160	194	194	11
DMHC-4/60S/T	443	187	221	198	443	187	221	194	12

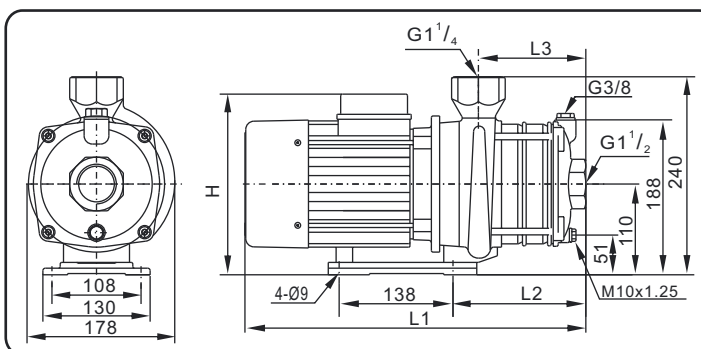
## DMHC-8



Suc. x Del.: 1 1/2" x 1 1/4"

Model	Dimensions (mm)								*Weight (kg)
	Single Phase				Three Phase				
	L1	L2	L3	H	L1	L2	L3	H	
DMHC-8/10S/T	328	73	78	235	328	73	78	214	13
DMHC-8/15S/T	358	103	108	235	358	103	108	214	15
DMHC-8/20S/T	358	103	108	235	358	103	108	214	18
DMHC-8/25S/T	426	133	138	244	426	133	138	222	20
DMHC-8/30S/T	468	133	138	230	426	133	138	222	25
DMHC-8/35S/T	500	163	168	230	456	163	168	222	30
DMHC-8/40S/T	500	163	168	230	456	163	168	222	31

## DMHC-8B



Suc. x Del.: 1 1/2" x 1 1/4"

Model	Dimensions (mm)								Weight (kg)
	Single Phase				Three Phase				
	L1	L2	L3	H	L1	L2	L3	H	
DMHC-8/10BS/T	326	73	78	237	326	73	78	216	14
DMHC-8/20BS/T	356	103	108	237	356	103	108	216	15
DMHC-8/30BS/T	416	133	138	246	416	133	138	222	19
DMHC-8/40BS/T	446	163	168	246	446	163	168	222	20
DMHC-8/50BS/T	521	193	198	227	476	193	198	222	28
DMHC-8/60BS/T	-	-	-	-	568	223	228	227	29

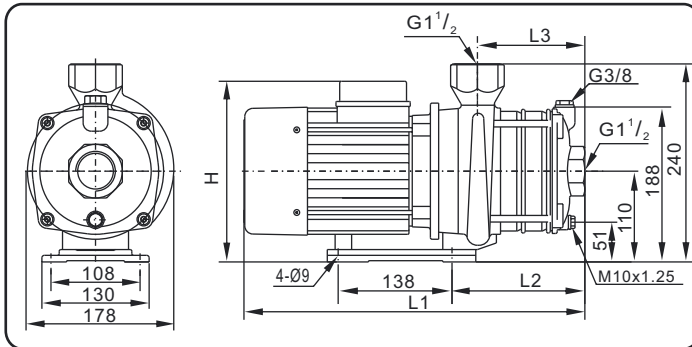
In the view of our continuous developments the given information / description / specifications / illustrations are subject to change without prior notice.



# Dimensional Tables

## DMHC-12

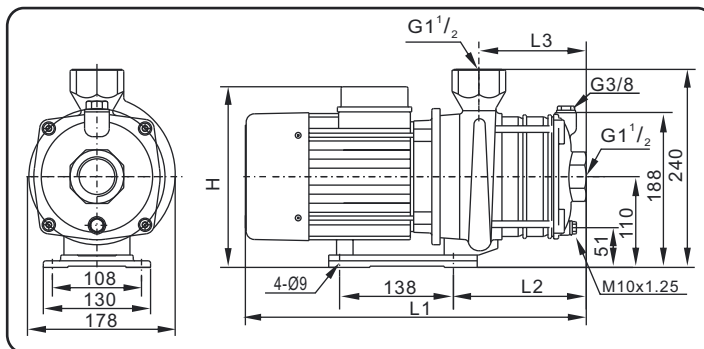
Suc. x Del.: 1½" x 1½"



Model	Dimensions(mm)								Weight (kg)
	Single Phase				Three Phase				
	L1	L2	L3	H	L1	L2	L3	H	
DMHC-12/10S/T	328	73	78	235	328	73	78	214	15
DMHC-12/15S/T	395	103	108	244	395	103	108	222	18
DMHC-12/20S/T	436	103	108	230	395	103	108	222	20
DMHC-12/25S/T	468	133	138	230	426	133	138	222	24
DMHC-12/30S/T	-	-	-	-	485	133	138	230	27

## DMHC-12B

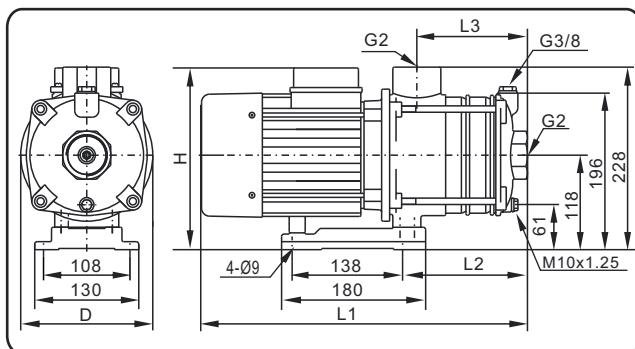
Suc. x Del.: 1½" x 1½"



Model	Dimensions(mm)								Weight (kg)
	Single Phase				Three Phase				
	L1	L2	L3	H	L1	L2	L3	H	
DMHC-12/10BS/T	330	73	78	237	330	73	78	216	13
DMHC-12/20BS/T	395	103	108	246	395	103	108	222	15
DMHC-12/30BS/T	467	133	138	227	425	133	138	222	26
DMHC-12/40BS/T	497	163	168	227	455	163	168	227	28
DMHC-12/50BT	-	-	-	-	544	193	198	227	31

## DMHC-16

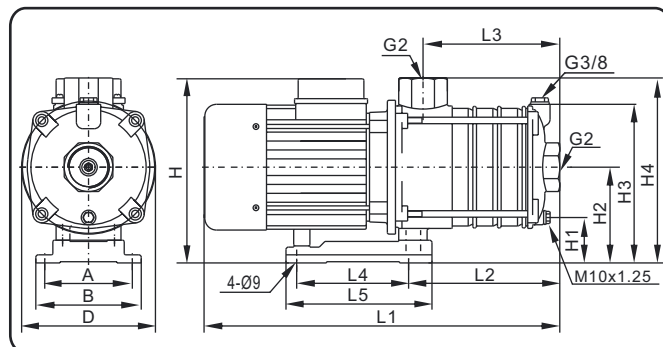
Suc. x Del.: 2" x 2"



Model	Dimensions(mm)										*Weight (kg)
	Single Phase					Three Phase					
	L1	L2	L3	H	D	L1	L2	L3	H	D	
DMHC-16/10S/T	325	106	81	244	165	325	106	81	218	165	14
DMHC-16/20S/T	406	151	126	254	165	406	151	126	228	165	20
DMHC-16/30S/T	493	196	171	235	176	493	196	171	235	176	27
DMHC-16/40T	-	-	-	-	-	555	241	216	235	176	30

## DMHC-20

Suc. x Del.: 2" x 2"

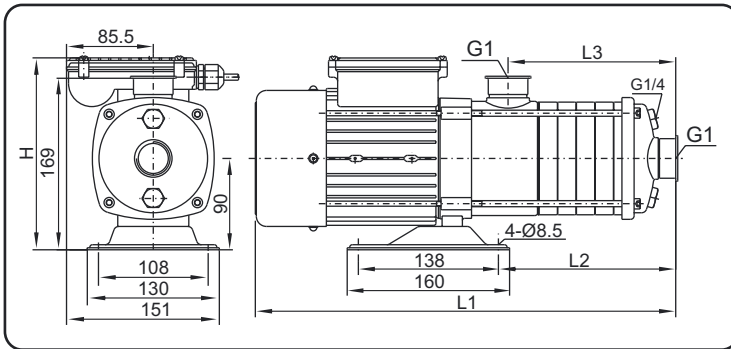


Model	Dimensions(mm)													Weight (kg)
	L1	L2	L3	L4	L5	H	H1	H2	H3	H4	A	B	D	
DMHC-20/10S/T	325	106	81	138	180	244	61	118	196	228	108	130	165	16
DMHC-20/20S/T	450	151	126	138	180	235	61	118	196	228	108	130	176	26
DMHC-20/10S/T	325	106	81	138	180	218	61	118	196	228	108	130	165	15.5
DMHC-20/20S/T	406	151	126	138	180	228	61	118	196	228	108	130	165	25.5
DMHC-20/30S/T	510	196	171	138	180	235	61	118	196	228	108	130	176	30
DMHC-20/40T	575	316	216	140	175	248	43	100	178	210	160	200	195	35

In the view of our continuous developments the given information / description / specifications / illustrations are subject to change without prior notice.

## DMHS-2 / DMHN-2

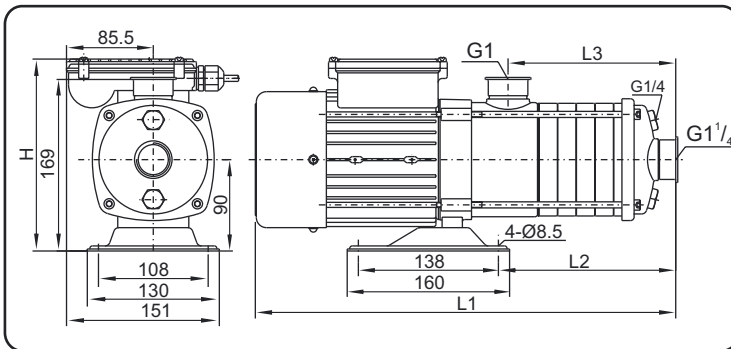
Suc. x Del.: 1" x 1"



Model	Dimensions(mm)								Weight (kg)
	Single Phase				Three Phase				
	L1	L2	L3	H	L1	L2	L3	H	
DMHS-2/20S/T	342	103	92	189	342	103	92	192	7.5
DMHS-2/30S/T	360	121	110	189	360	121	110	192	8
DMHS-2/40S/T	378	139	128	189	378	139	128	192	9
DMHS-2/50S/T	396	157	146	189	396	157	146	192	10
DMHS-2/60S/T	414	175	164	189	414	175	164	192	11

## DMHS-4 / DMHN-4

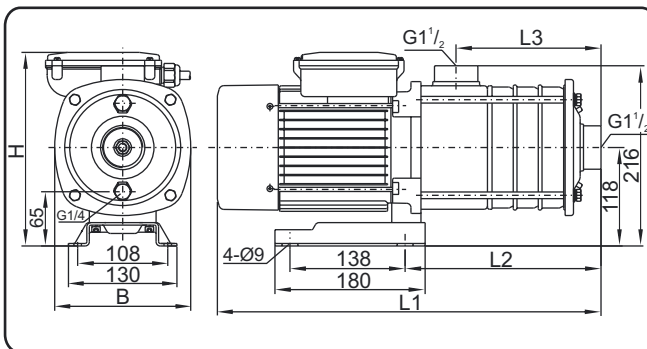
Suc. x Del.: 1 1/4" x 1"



Model	Dimensions(mm)								*Weight (kg)
	Single Phase				Three Phase				
	L1	L2	L3	H	L1	L2	L3	H	
DMHS-4/20S/T	342	103	92	189	342	103	92	192	9
DMHS-4/30S/T	360	121	110	189	360	121	110	192	10
DMHS-4/40S/T	378	139	128	189	378	139	128	192	11
DMHS-4/50S/T	396	157	146	215	396	157	146	192	12
DMHS-4/60S/T	414	175	164	215	414	175	164	192	13

## DMHS-8 / DMHN-8

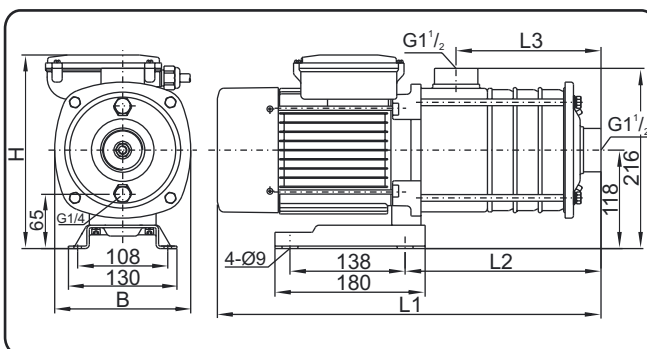
Suc. x Del.: 1 1/2" x 1 1/2"



Model	Dimensions(mm)										Weight (kg)
	Single Phase					Three Phase					
	L1	L2	L3	H	B	L1	L2	L3	H	B	
DMHS-8/10S/T	340	144	83	227	163	340	144	83	220	163	13
DMHS-8/15S/T	370	175	113	227	163	370	175	113	220	163	15
DMHS-8/20S/T	370	175	113	227	163	370	175	113	220	163	18
DMHS-8/25S/T	432	205	144	235	163	432	205	144	225	163	20
DMHS-8/30S/T	474	205	144	262	168	432	205	144	225	163	25
DMHS-8/35S/T	504	235	174	262	168	463	235	174	225	163	26
DMHS-8/40S/T	504	235	174	262	168	463	235	174	225	163	28

## DMHS-8B / DMHN-8B

Suc. x Del.: 1 1/2" x 1 1/2"



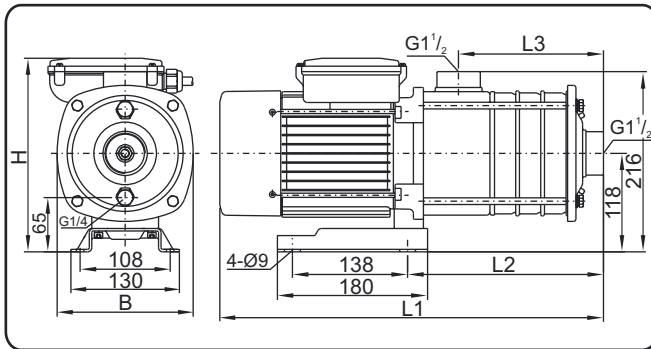
Model	Dimensions(mm)										Weight (kg)
	Single Phase					Three Phase					
	L1	L2	L3	H	B	L1	L2	L3	H	B	
DMHS-8/10BS/T	340	144	83	227	163	340	144	83	220	163	14
DMHS-8/20BS/T	370	175	113	227	163	370	175	113	220	163	15
DMHS-8/30BS/T	432	205	144	235	163	432	205	144	225	163	19
DMHS-8/40BS/T	463	235	174	235	16	463	235	174	225	163	20
DMHS-8/50BS/T	534	265	204	262	168	493	265	204	225	163	28
DMHS-8/60BT	-	-	-	-	-	584	296	234	230	168	31

In the view of our continuous developments the given information / description / specifications / illustrations are subject to change without prior notice.

# Dimensional Tables

## DMHS -12 / DMHN -12

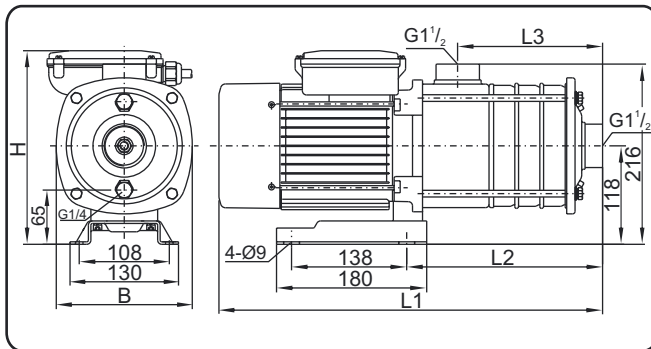
Suc. x Del.: 1½”x1½”



Model	Dimensions(mm)										Weight (kg)
	Single Phase					Three Phase					
	L1	L2	L3	H	B	L1	L2	L3	H	B	
DMHS-12/10S/T	340	144	83	227	163	340	144	83	220	163	14
DMHS-12/15S/T	402	175	113	235	163	402	175	113	225	163	16
DMHS-12/20S/T	444	175	113	262	168	444	175	113	225	163	24
DMHS-12/25S/T	474	205	144	262	168	474	205	144	225	163	26
DMHS-12/30T	-	-	-	-	-	494	205	144	230	168	28

## DMHS-12B / DMHN-12B

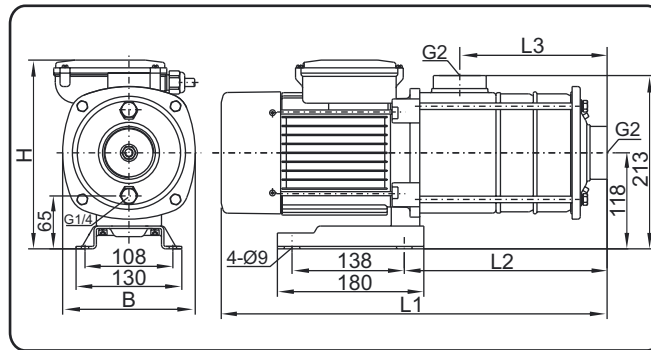
Suc. x Del.: 1½”x1½”



Model	Dimensions(mm)										Weight (kg)
	Single Phase					Three Phase					
	L1	L2	L3	H	B	L1	L2	L3	H	B	
DMHS-12/10BS/T	340	144	83	227	163	340	144	83	220	163	13
DMHS-12/20BS/T	402	175	113	235	163	402	175	113	225	163	15
DMHS-12/30BS/T	474	205	144	262	168	432	205	144	225	168	26
DMHS-12/40BS/T	504	235	174	262	168	462	235	174	225	168	28
DMHS-12/50BT	-	-	-	-	-	554	265	204	230	168	31

## DMHS-16 / DMHN-16

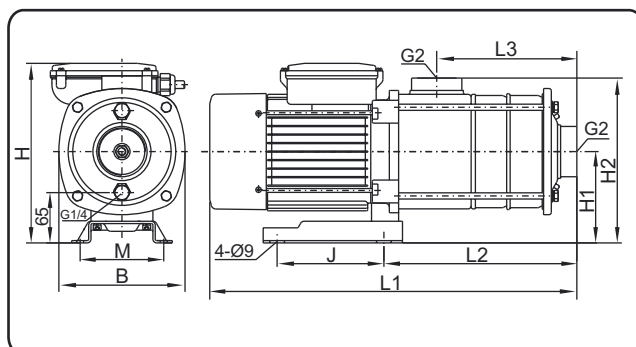
Suc. x Del.: 2”x2”



Model	Dimensions(mm)										Weight (kg)
	Single Phase					Three Phase					
	L1	L2	L3	H	B	L1	L2	L3	H	B	
DMHS-16/10S/T	354	158	90	227	163	354	158	90	220	163	13
DMHS-16/20S/T	431	204	136	235	163	431	204	136	225	163	19
DMHS-16/30S/T	518	249	181	262	168	518	249	181	230	168	26
DMHS-16/40T	-	-	-	-	-	563	294	226	230	168	29

## DMHS-20 / DMHN-20

Suc. x Del.: 2”x2”

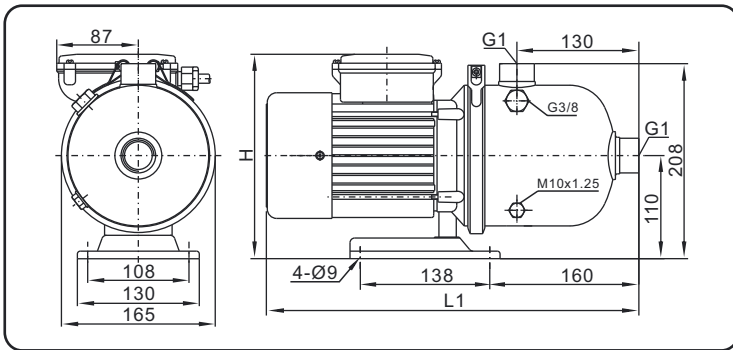


Model	Dimensions(mm)												Weight (kg)
	Single Phase						Three Phase						
	L2	L3	M	J	H1	H2	H	L1	B	H	L1	B	
DMHS-20/10S/T	158	90	108	138	118	213	245	354	163	220	354	163	15
DMHS-20/20S/T	204	136	108	138	118	213	262	472	168	225	431	163	25
DMHS-20/30T	249	181	108	138	118	213	-	-	-	230	538	168	29
DMHS-20/40T	338	226	190	140	132	227	-	-	-	279	602	190	34

In the view of our continuous developments the given information / description / specifications / illustrations are subject to change without prior notice.

# Dimensional Tables

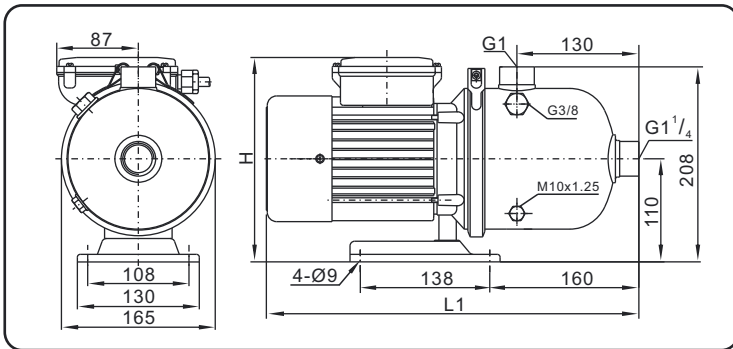
## DMHD-2



Suc. x Del.: 1" x 1"

Model	Dimensions(mm)				Weight (kg)
	Single Phase		Three Phase		
	L1	H	L1	H	
DMHD-2/20S/T	400	217	400	214	8
DMHD-2/30S/T	400	217	400	214	8.5
DMHD-2/40S/T	400	217	400	214	9.5
DMHD-2/50S/T	400	217	400	214	11
DMHD-2/60S/T	400	217	400	214	12

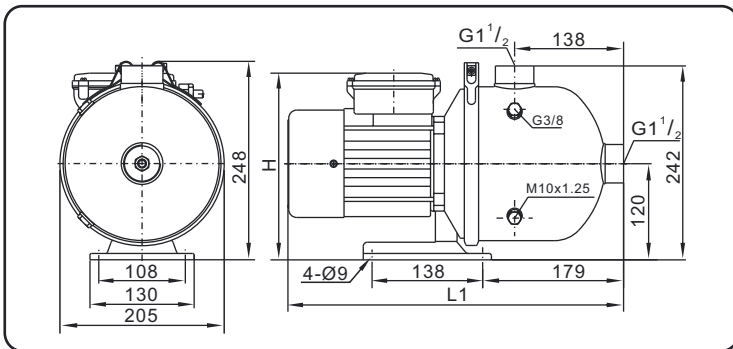
## DMHD-4



Suc. x Del.: 1 1/4" x 1"

Model	Dimensions(mm)				Weight (kg)
	Single Phase		Three Phase		
	L1	H	L1	H	
DMHD-4/20S/T	400	217	400	214	9.7
DMHD-4/30S/T	400	217	400	214	11
DMHD-4/40S/T	400	217	400	214	11.5
DMHD-4/50S/T	400	217	400	214	12.5
DMHD-4/60S/T	400	217	400	214	13.5

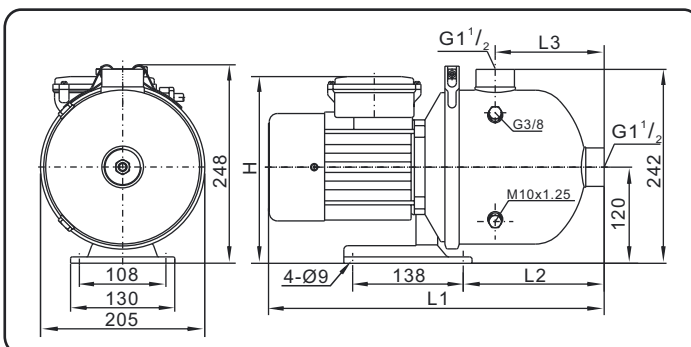
## DMHD-8



Suc. x Del.: 1 1/2" x 1 1/2"

Model	Dimensions(mm)				Weight (kg)
	Single Phase		Three Phase		
	L1	H	L1	H	
DMHD-8/10S/T	424	227	424	222	10.5
DMHD-8/15S/T	424	227	424	222	12
DMHD-8/20S/T	424	227	424	222	14
DMHD-8/25S/T	459	235	459	232	17
DMHD-8/30S/T	500	239	459	232	21.5
DMHD-8/35S/T	500	239	459	232	23
DMHD-8/40S/T	500	239	459	232	24

## DMHD-8B



Suc. x Del.: 1 1/2" x 1 1/2"

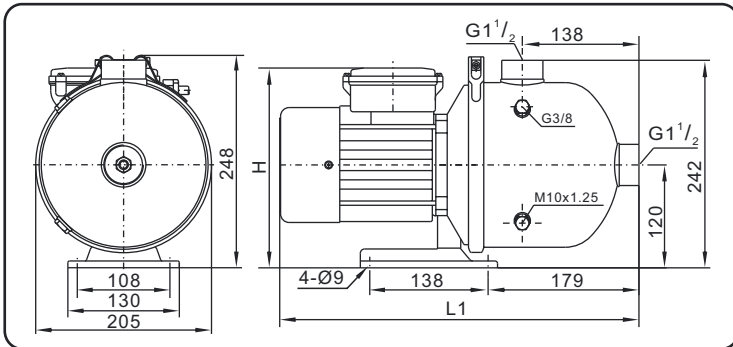
Model	Dimensions(mm)								Weight (kg)
	Single Phase				Three Phase				
	L1	L2	L3	H	L1	L2	L3	H	
DMHD-8/10BS/T	425	180	139	227	425	180	139	224	10
DMHD-8/20BS/T	425	180	139	227	425	180	139	224	11.5
DMHD-8/30BS/T	455	180	139	235	455	180	139	232	13
DMHD-8/40BS/T	455	180	139	235	455	180	139	232	16
DMHD-8/50BS/T	566	246	205	239	521	246	205	232	25

In the view of our continuous developments the given information / description / specifications / illustrations are subject to change without prior notice.

# Dimensional Tables

## DMHD-12

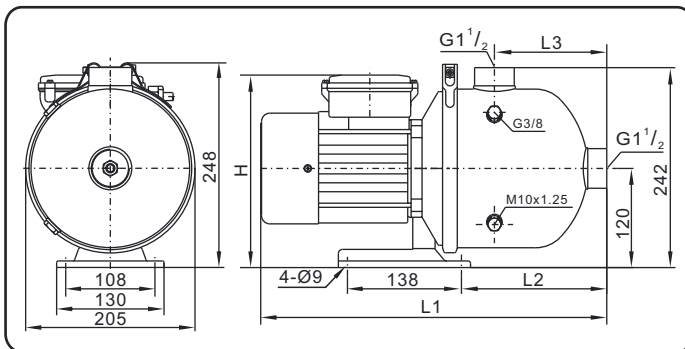
Suc. x Del.: 1½" x 1½"



Model	Dimensions(mm)				Weight (kg)
	Single Phase		Three Phase		
	L1	H	L1	H	
DMHD-12/10S/T	424	227	425	222	12
DMHD-12/15S/T	459	235	459	232	13.5
DMHD-12/20S/T	500	239	459	232	21
DMHD-12/25S/T	500	239	459	232	24
DMHD-12/30T	-	-	518	239	27

## DMHD-12B

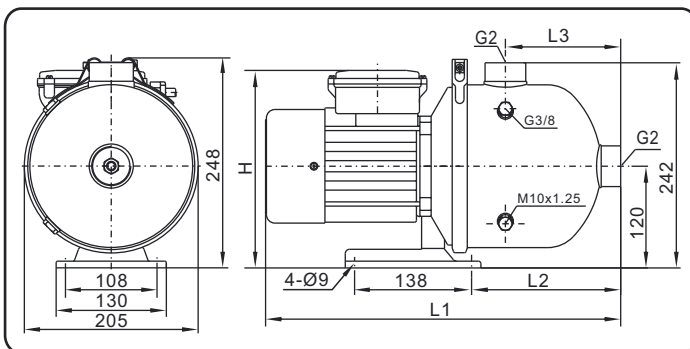
Suc. x Del.: 1½" x 1½"



Model	Dimensions(mm)								Weight (kg)
	Single Phase				Three Phase				
	L1	L2	L3	H	L1	L2	L3	H	
DMHD-12/10BS/T	425	180	139	227	425	180	139	224	11
DMHD-12/20BS/T	458	180	139	235	455	180	139	232	13
DMHD-12/30BS/T	500	180	139	239	455	180	139	232	23
DMHD-12/40BS/T	500	180	139	239	455	180	139	232	24
DMHD-12/50BT	-	-	-	-	583	246	205	239	27

## DMHD-16

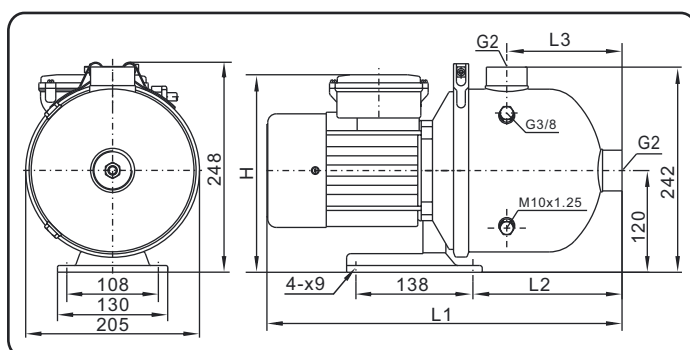
Suc. x Del.: 2" x 2"



Model	Dimensions(mm)								Weight (kg)
	Single Phase				Three Phase				
	L1	L2	L3	H	L1	L2	L3	H	
DMHD-16/10S/T	425	175	136	245	425	175	136	224	13.5
DMHD-16/20S/T	455	175	136	254	455	175	136	232	17
DMHD-16/30S/T	520	201	162	239	480	201	162	232	23

## DMHD-20

Suc. x Del.: 2" x 2"



Model	Dimensions(mm)								Weight (kg)
	Single Phase				Three Phase				
	L1	L2	L3	H	L1	L2	L3	H	
DMHD-20/10S/T	425	175	136	245	425	175	136	224	20
DMHD-20/20S/T	498	175	136	239	455	175	136	232	22
DMHD-20/30T	-	-	-	-	540	201	162	239	25

In the view of our continuous developments the given information / description / specifications / illustrations are subject to change without prior notice.



# Certifications



IS 8034:2002



IS 12818:2010



IS 4985:2000



IS 14220:1994



IS 9283:1995



ISO 9001:2008



ISO 14001:2004



GEDA



BEE





**Duke Plasto Technique Pvt. Ltd.**

N.H.27, Deesa Highway,  
Badarpura, Palanpur-385511  
(North Gujarat) - India

Phone: +91-2742-280155/156

Fax: +91-2742-280101

email: [info@dukeplasto.com](mailto:info@dukeplasto.com)

[www.dukepumps.com](http://www.dukepumps.com)

[www.dukeplasto.com](http://www.dukeplasto.com)