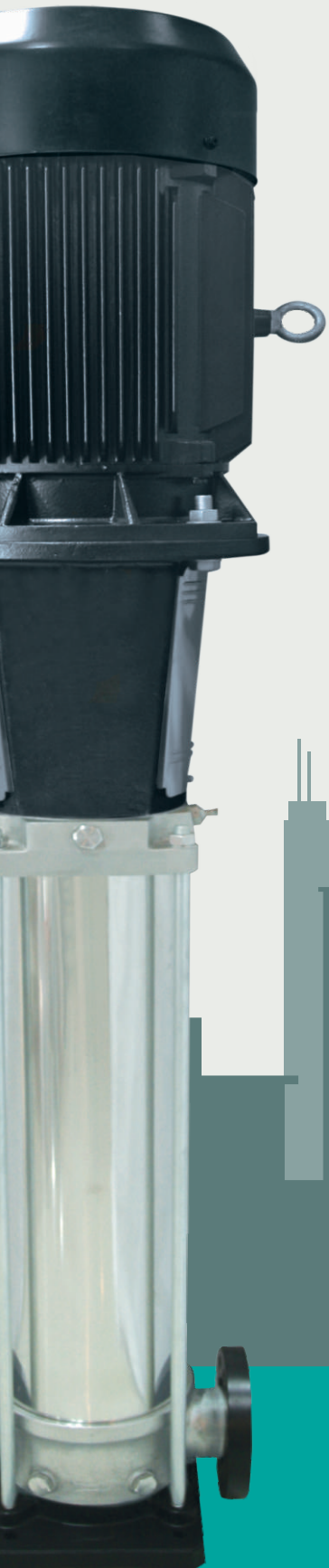


VERTICAL
MULTISTAGE PUMPS
- 50Hz



DMV Series



Vision

To be eminent global brand providing complete, innovative, invincible quality pumping paraphernalia under one roof.

Mission

We are committed to manufacture products complying with the best quality standards of the world.

We strive to create an environment that nurtures youth and nourishes the experienced.

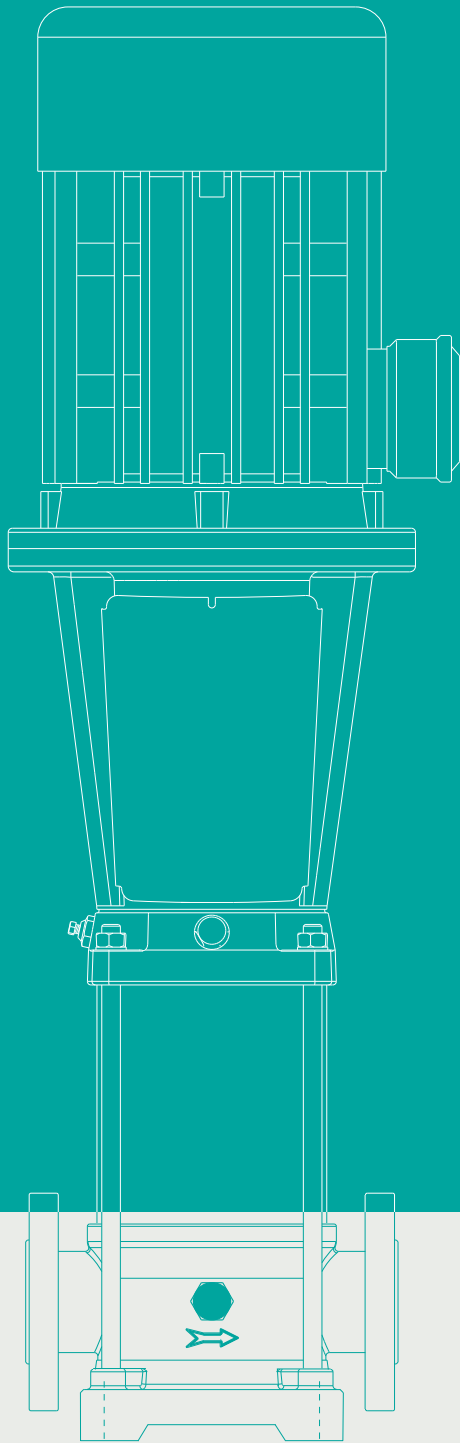
On the bedrock of ethics, Duke is instituted by amalgamating the best practices & technologies of the world.

Values

The values that guide us are
Trust, Ethics, Integrity,
Discipline and Performance

VERTICAL MULTISTAGE PUMPS

Product Information	05 - 07
Exploded Drawing	08 - 11
Performance & Dimensional Details	12 - 35
Motor Technical Details	36 - 37



Vertical
Multistage Pumps

DMV Series - 50Hz

Duke's **DMV - Series** pumps are Vertical Multistage Pumps, designed for clear liquid, high pressure applications. These Pumps are of centrifugal types, accommodating Radial & Mixed flow impellers according to the required Head & Flow. The vertical construction and In-line suction & delivery ports result in space saving and compact system design. The pump is driven with energy efficient IE1, IE2, IE3 motors. The motor winding designs are compactible to VFD operation and makes preferable to use it with the latest control systems. These pumps are applicable for both normal temperature & high temperature applications with appropriate change in the MoC of critical spare parts like mechanical seal etc. The precise design, materials combination, manufacturing process and stringent quality assurance procedures ensure high quality performance and durability of the pump. These pumps are available in Cast Iron, SS 304 & SS 316 constructions, which are called as DMVC, DMVS and DMVN constructions respectively.

Applications

- ◆ Hydro Pneumatic Systems
- ◆ Reverse Osmosis Plants
- ◆ Water Treatment systems
- ◆ Fire Fighting Systems
- ◆ Boiler Feed
- ◆ Sprinkler Irrigations Systems
- ◆ Industrial washing systems
- ◆ Utility Water Supply

Features

- ◆ Optimized Design
- ◆ Compactible to VFD operations
- ◆ Different types of MoC
- ◆ Different types inlet & outlet port connections
- ◆ Normal & High temperature designs

Curve Conditions

Hydraulic Performances of the pumps are same for all types Materials of constructions [DMVC, DMVS & DMVN constructions] | The given performances are for the clear water of specific gravity 1 | The given the performances are for the ideal conditions the actual performance may vary according the field parameters | The performances are applicable for the nominal speed of 2900rpm | The thick lines in the curves indicates the recommended operative region and the thin lines are non-operative regions | The Group performance curves are just an indicative and to locate the tentative family curve | Refer the individual curves for prompt selection of models.

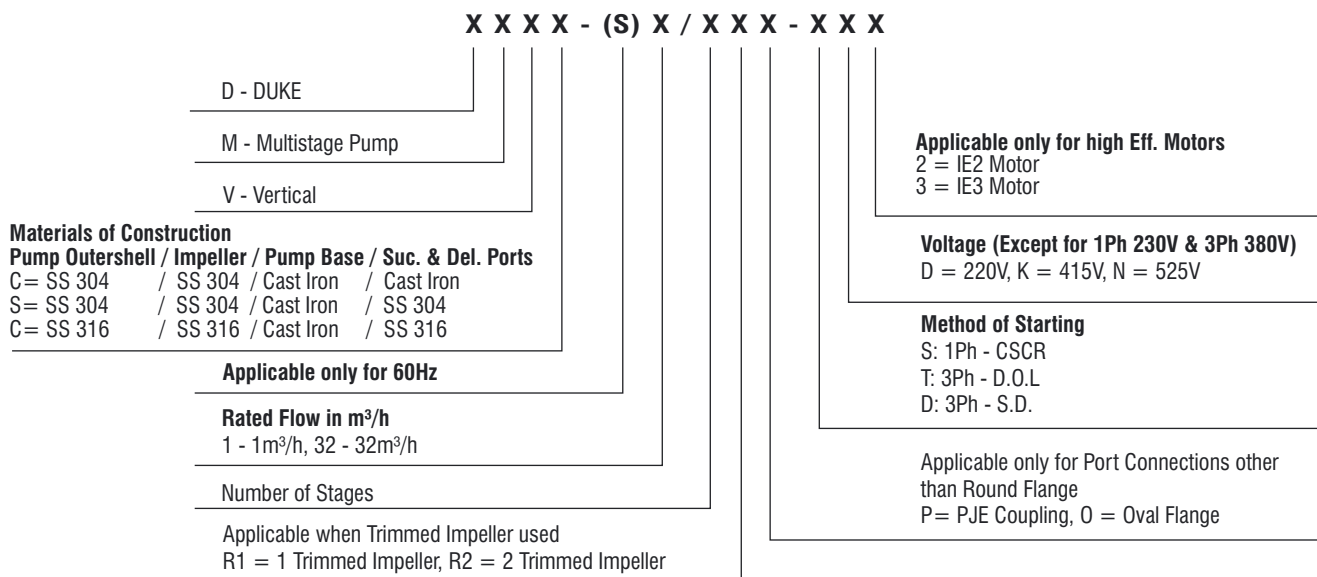
VERTICAL MULTISTAGE CENTRIFUGAL PUMPS DMV SERIES

Technical Specifications

Power Range	0.37 - 45 kW
Version	1Ph - 230V, 50Hz AC
	3Ph - 220 / 380-415, 50Hz AC
Nominal Speed	2900 rpm
Protection	IP 55
Insulation Class	F Class
Duty	S1 (continuous)
Direction of Rotation	Clockwise viewed from driving end
Sealing	Mechanical Seal
Flange type	Round flange, PJE Coupling, Oval flange
Flange Standard	DIN Standard
Max. Liquid Temperature	-15 to +120°C
Max. Ambient Temperature	40°C
Max. Operating Pressure	30 Bar
Flow Range	upto 120m ³ /h
Head Range	upto 315m

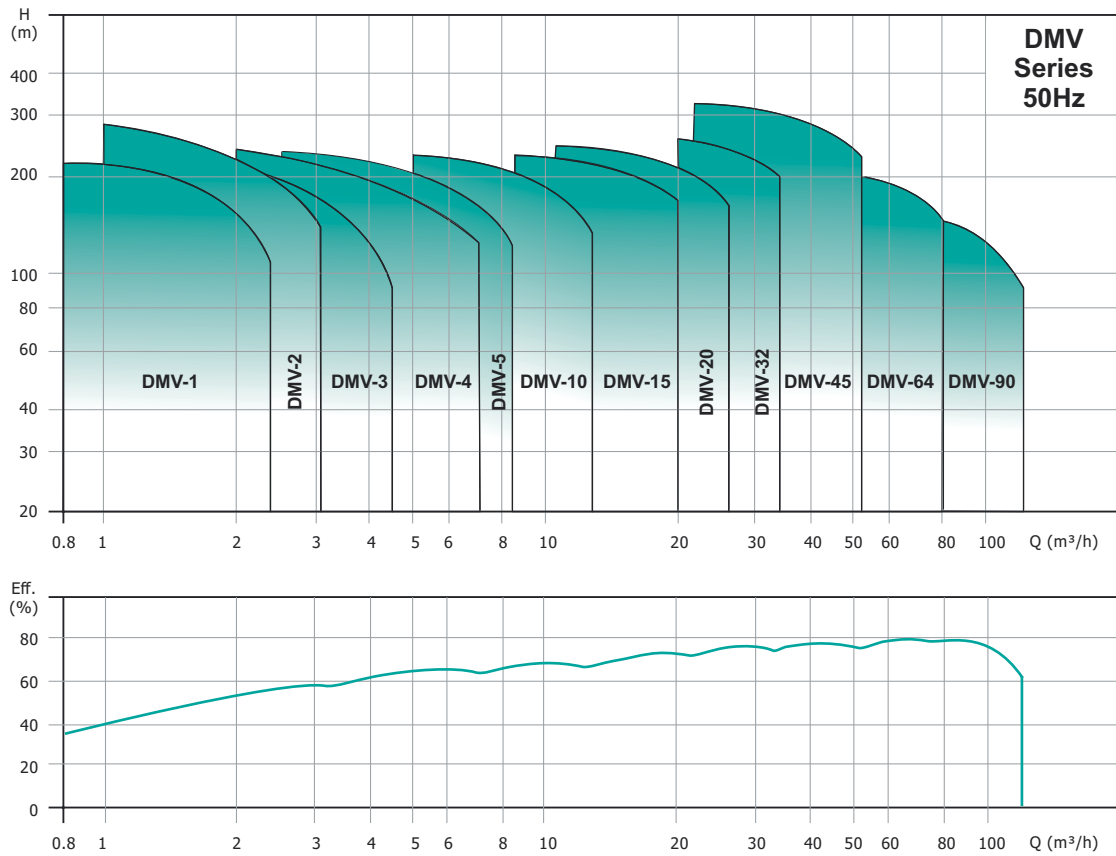
Liquid Characteristics : Applicable for Clear, non-aggressive liquids free from solids / foreign particles

Model Identification Code



In the view of our continuous developments the given information / description / specifications / illustrations are subject to change without prior notice.

Group Performance Curves

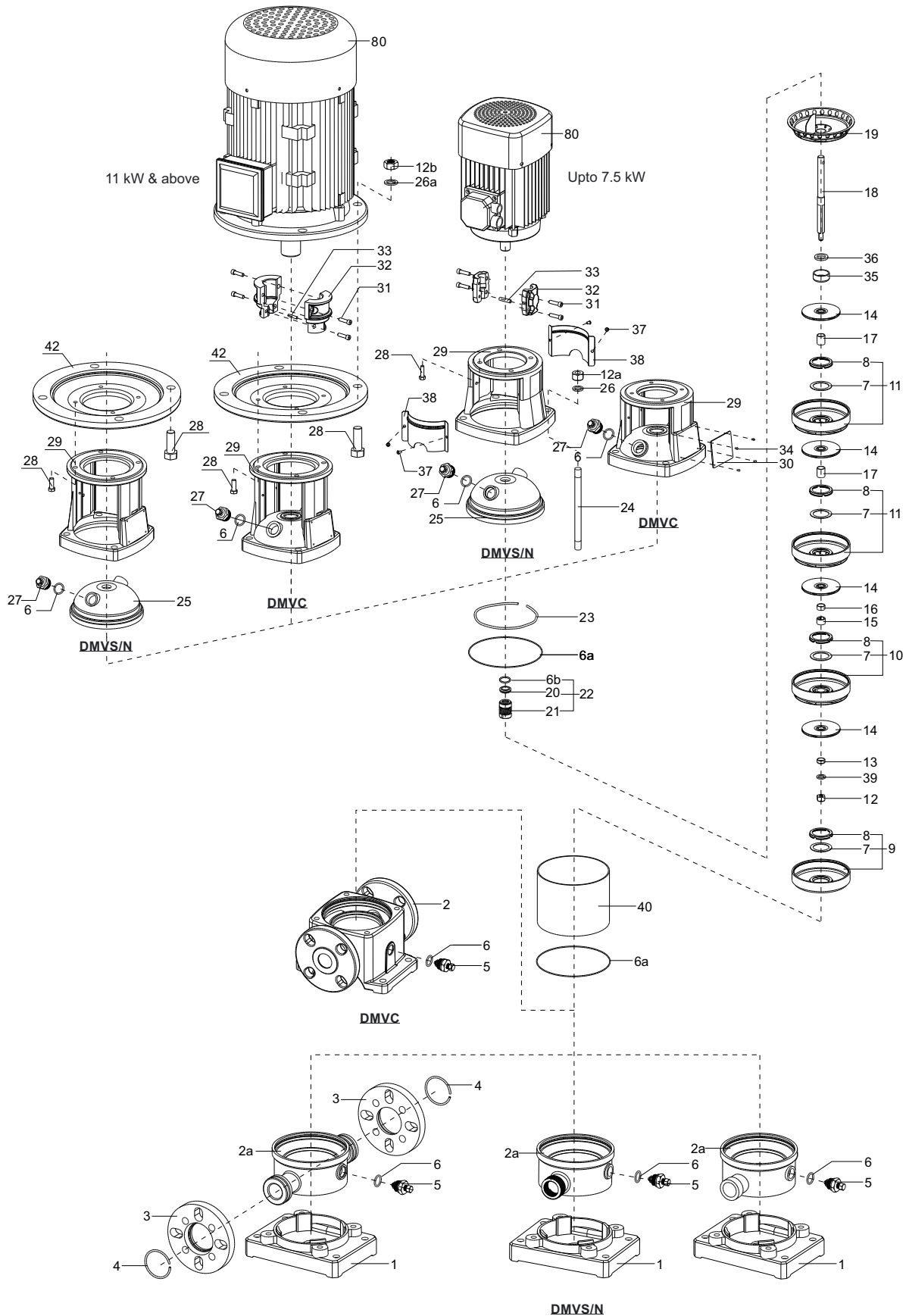


Materials of Construction

Part Name	DMVC	DMVS	DMVN
Pump Housing	Cast Iron	SS 304	SS 316
Pump Shell	SS 304	SS 304	SS 316
Impeller	SS 304	SS 304	SS 316
Diffuser Casing	SS 304	SS 304	SS 316
Pump Shaft	SS 304 / 431	SS 304 / 431	SS 316/329
Mechanical Seal	SiC / SiC	SiC / SiC	SiC / SiC
Coupling	M.S / C.I.	M.S / C.I.	M.S / C.I.
Wearing Ring	Teflon	Teflon	Teflon
Bush	SiC / SiC	SiC / SiC	SiC / SiC
Split Cone	SS 304	SS 304	SS 316
Split Cone Nut	SS 304	SS 304	SS 316
Flange	Cast Iron	SS 304	SS 316
Neck Ring	SS 304	SS 304	SS 316
"O" Ring	EPDM	EPDM	EPDM
Base Plate	NA	Cast Iron	Cast Iron

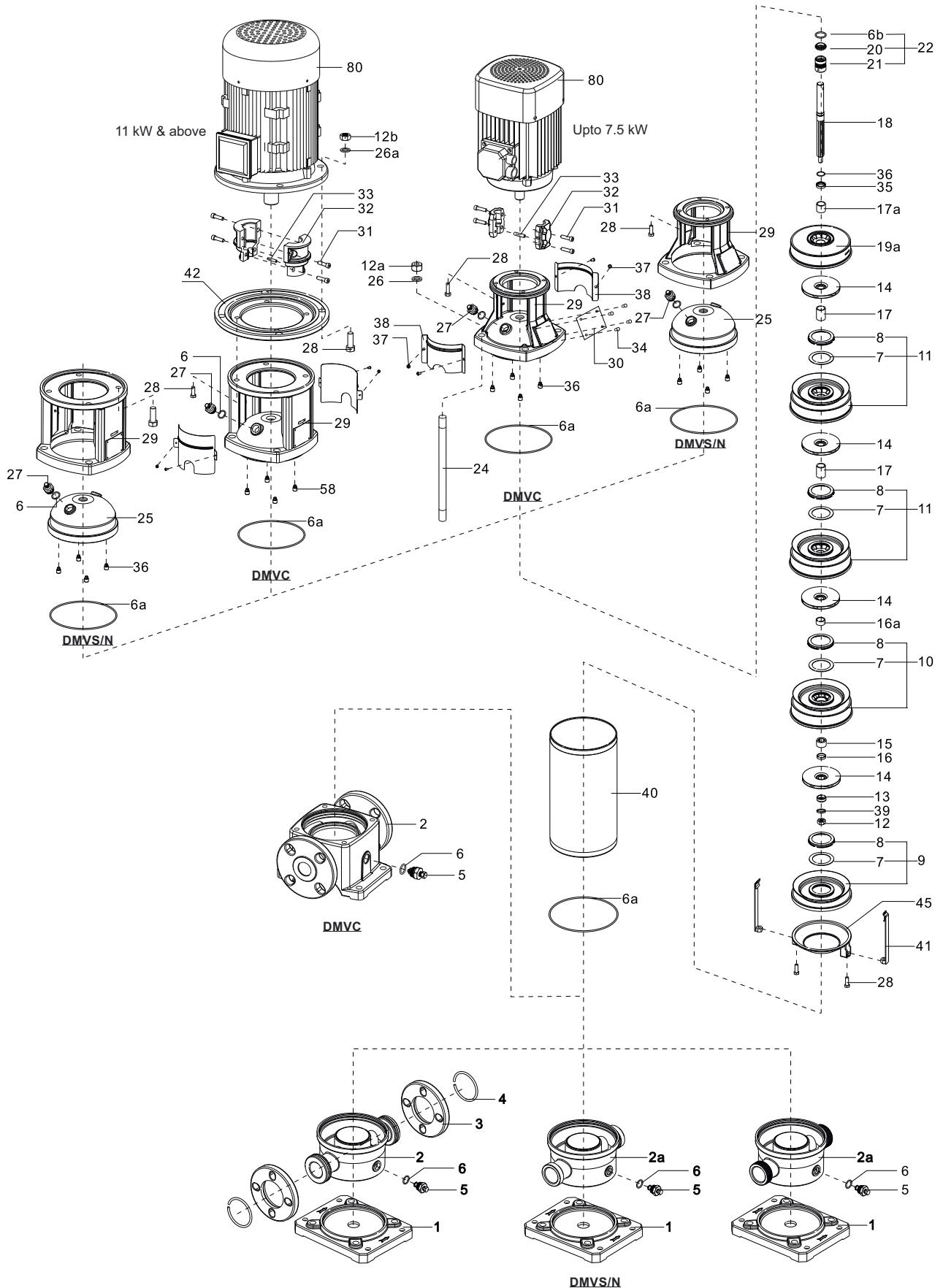
In the view of our continuous developments the given information / description / specifications / illustrations are subject to change without prior notice.

Exploded View : 1m³/h, 2m³/h, 3m³/h, 4m³/h & 5m³/h



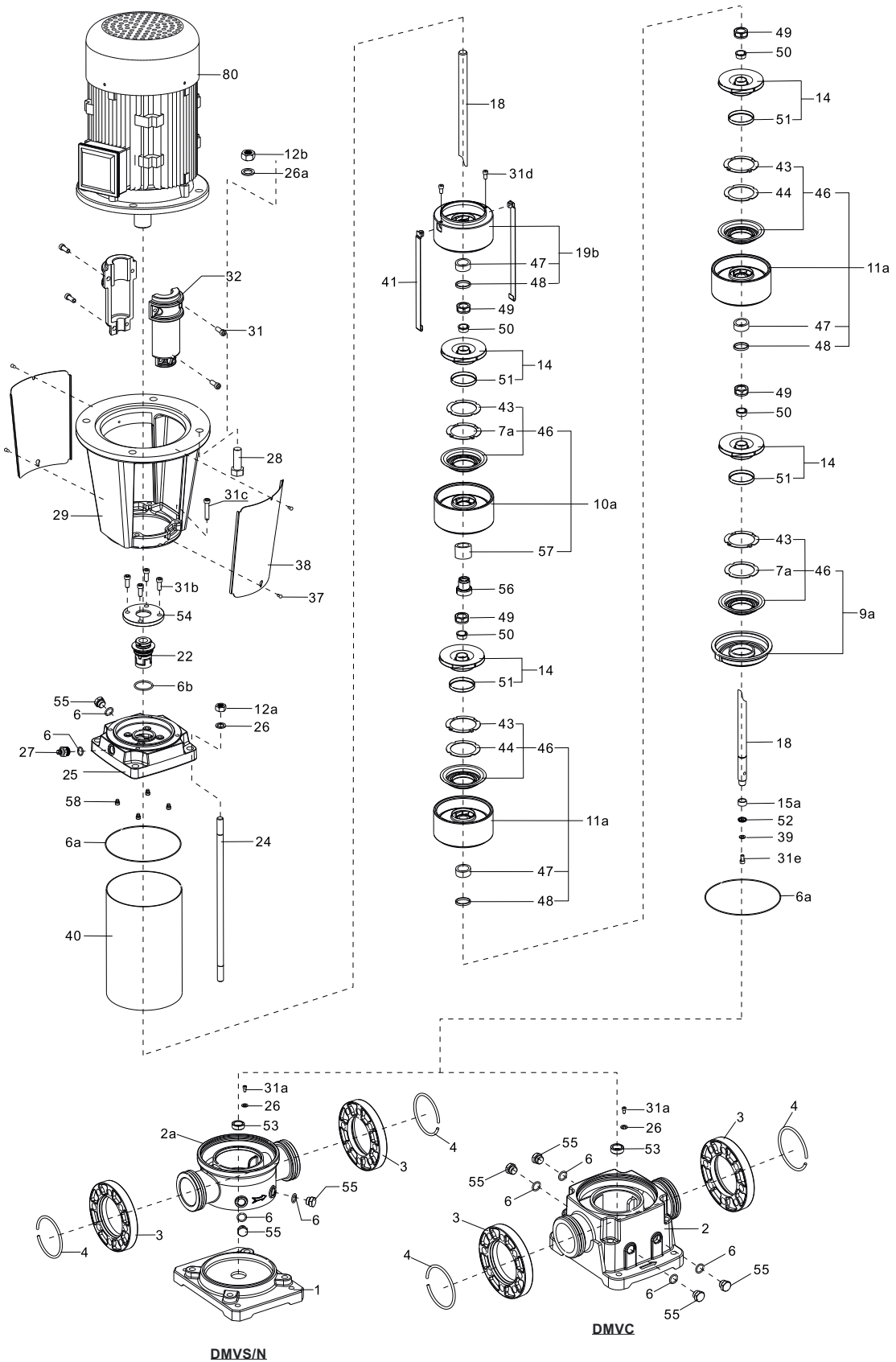
In the view of our continuous developments the given information / description / specifications / illustrations are subject to change without prior notice.

Exploded View : 10m³/h, 15m³/h & 20m³/h



In the view of our continuous developments the given information / description / specifications / illustrations are subject to change without prior notice.

Exploded View : 32m³/h, 45m³/h, 65m³/h & 90m³/h



In the view of our continuous developments the given information / description / specifications / illustrations are subject to change without prior notice.

Parts & Materials of Constructions

Part No.	Description	Material	Part No.	Description	Material
1	Base	Cast iron	27	Vent plug	SS304
2	Pump housing	Cast iron	28	Bolt	Zinc
2a	Pump housing	SS304 /SS316	28a	Bolt	Zinc
3	Flange	Cast iron	29	Motor frame	Cast Iron
4	Circlip	SS201	30	Nameplate	Aluminum
5	Drainplug	SS304	31	Screw	Zinc
6	O-ring	NBR	31a	Screw	Zinc
6a	O-ring	NBR	31b	Screw	Zinc
6b	O-ring	NBR	31c	Screw	Zinc
7	Seal	PTFE	31d	Screw	Zinc
7a	Seal	PTFE	31«	Screw	Zinc
8	Seal	SS304	32	Shaft coupling	Ductile Iron
9	Inlet section	SS304	33	Screw	Zinc
9a	Inlet section	SS304	34	Nail	M62
10	Support diffuser	SS304	35	Clip sleeve	SS304
10a	Support diffuser	SS304	36	Clip ring	SS304
11	Diffuser	SS304	37	Screw	SS304
11a	Diffuser	SS304	38	Coupling guard	SS304
12	Nut	Zinc	39	Spring pad	SS304
12a	Nut	Zinc	40	Outer sleeve	SS304
12b	Nut	Zinc	41	Link group	SS304
13	Impeller sleeve	SS304	42	Motor flange	Cast iron
14	Impeller	SS304	43	Gasket	NBR
15	Bearing sleeve	Tungsten carbide	44	Oval flange	Cast iron
15a	Bearing sleeve	Tungsten carbide	45	Fix cover	SS304
16	Short sleeve I	SS304	46	Neck ring	SS304
16a	Short sleeve II	SS304	47	Liner	PTFE
17	1cm sleeve	SS304	48	Support ring	SS304
17a	1cm sleeve	SS304	49	Nut	SS304
18	Shift	SS431	50	Split Cone	SS304
19	Outlet section	SS304	51	Wear ring for impeller	SS304
19a	Outlet section	SS304	52	Press sleeve	SS304
19b	Outlet section	SS304	53	Slide bearing	Tungsten Carbide
20	Stationary seal ring	Carbon	54	Gland cover	Cast steel
21	Guide Bush	Tungsten carbide	55	Drain Plug	SS304
22	Mechanical seal	Carbon/tungsten carbide/viton	56	Bearing sleeve	Tungsten carbide+ SS304
23	Snap ring	SS304	57	Slide bearing	Tungsten carbide
24	Bolt	Zinc	80	Motor	
25	Pump cover	SS304			
26	Washer	SS304			

In the view of our continuous developments the given information / description / specifications / illustrations are subject to change without prior notice.

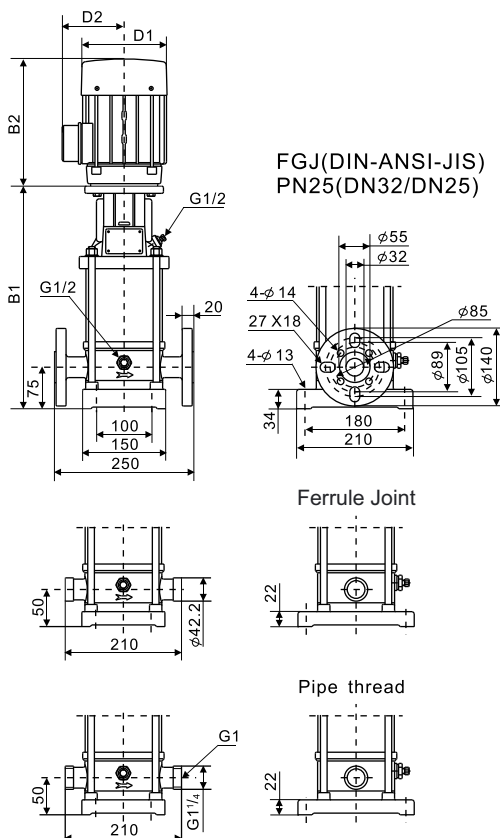
DMV-1

Performance Table

2900 rpm

Model	Motor Power (P ₂)		Q (m ³ /h)	0.4	0.6	0.8	1.0	1.2	1.4	1.6	1.8	20	2.2
	kW	HP											
DMV-1/02	0.37	0.5	HEAD IN METERS	12	11.8	11.5	11	11	10.5	10	9	8.5	8
DMV-1/03	0.37	0.5		17.5	17	16.8	16.5	16	15.5	14	13.5	12	11
DMV-1/04	0.37	0.5		23.5	23	22.5	22	21	20.5	18.5	18	16.5	14
DMV-1/05	0.37	0.5		29	28.5	28	27.5	26.5	26	24	23	20.5	18
DMV-1/06	0.37	0.5		35	34.5	34	33	32	31	28	27	25	22
DMV-1/07	0.37	0.5		41	40	39	38	37	35	33	32	29	25
DMV-1/08	0.55	0.75		46.5	46	45	44	42	40	38	36	33	29
DMV-1/09	0.55	0.75		52	51.5	51	49.5	48	46	44	41	37	34
DMV-1/10	0.55	0.75		58	57.5	57	56	54	52	48	46	42	37
DMV-1/11	0.55	0.75		65	63	62	61	59	56	54	50	46	40
DMV-1/12	0.75	1		70	69	68	66	64	62	58	55	49	43
DMV-1/13	0.75	1		75	74.5	74	72	69	66	63	59	54	47
DMV-1/15	0.75	1		87	86	85	84	81	77	72	68	62	53
DMV-1/17	1.1	1.5		99	98	97	95	91	87	82	70	69	59
DMV-1/19	1.1	1.5		110	109	108	106	101	97	91	86	78	66
DMV-1/21	1.1	1.5		122	120	119	116	112	108	101	95	86	73
DMV-1/23	1.1	1.5		135	132	130	126	122	117	111	104	94	80
DMV-1/25	1.5	2		147	144	141	138	133	128	121	114	103	87
DMV-1/27	1.5	2		158	156	154	150	144	138	130	121	112	96
DMV-1/30	1.5	2		175	173	171	166	160	154	145	136	124	108
DMV-1/33	2.2	3		193	191	188	183	176	170	160	150	136	120
DMV-1/36	2.2	3		212	209	205	200	192	184	174	164	150	133

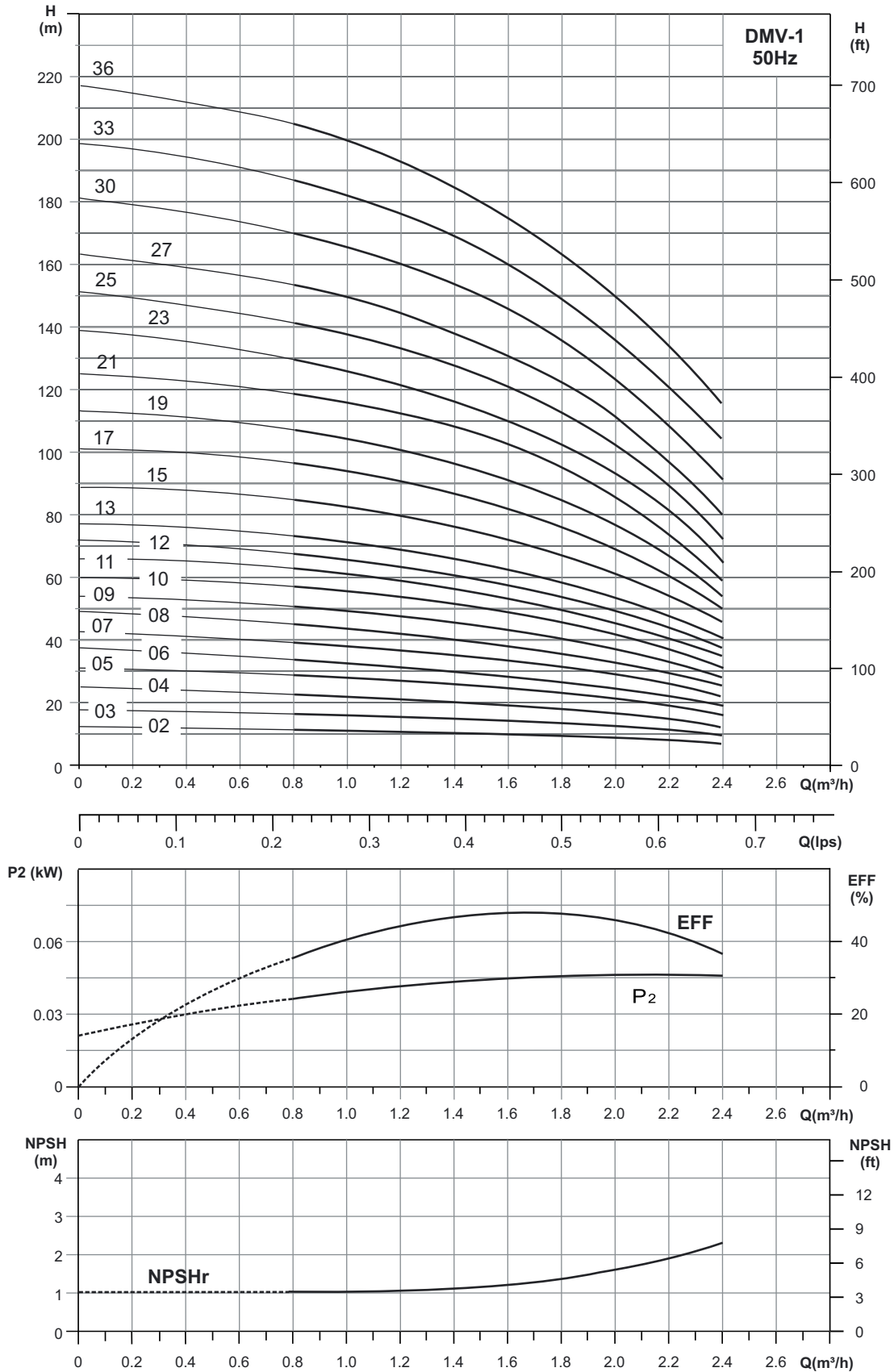
Dimensional Table



Model	Dimensions (mm)					*Weight (kg)
	B1	B2	B1 + B2	D1	D2	
DMV-1/02	259	205	464	133	102/124	20
DMV-1/03	277	205	482	133	102/124	20
DMV-1/04	295	205	500	133	102/124	21
DMV-1/05	313	205	518	133	102/124	21
DMV-1/06	331	205	536	133	102/124	21
DMV-1/07	349	205	554	133	102/124	22
DMV-1/08	367	205	572	133	102/124	22
DMV-1/09	385	205	590	133	102/124	23
DMV-1/10	403	205	608	133	102/124	24
DMV-1/11	427	205	632	154	102/124	25
DMV-1/12	439	205	644	154	102/124	26
DMV-1/13	457	205	662	154	102/124	27
DMV-1/15	493	205	698	154	102/124	28
DMV-1/17	535	241	776	154	102/133	31
DMV-1/19	574	241	815	154	111/133	32
DMV-1/21	607	241	848	154	111/133	33
DMV-1/23	643	241	884	154	111/133	34
DMV-1/25	671/687	241/293	912/980	154/177	111/144.5	40
DMV-1/27	715/723	241/293	956/1016	154/177	111/144.5	41
DMV-1/30	769/777	241/293	1010/1070	154/177	111/144.5	42
DMV-1/33	831	275/293	1106/1124	177	116/144.5	45
DMV-1/36	885	275/293	1160/1178	177	116/144.5	46

* The given are indicative nett weights only, the actual gross weight will vary according to the packing materials & MoC. The letter C / S / N to be added in model name as 4th letter for Cast Iron, SS 304, SS 316 constructions respectively.

In the view of our continuous developments the given information / description / specifications / illustrations are subject to change without prior notice.



In the view of our continuous developments the given information / description / specifications / illustrations are subject to change without prior notice.

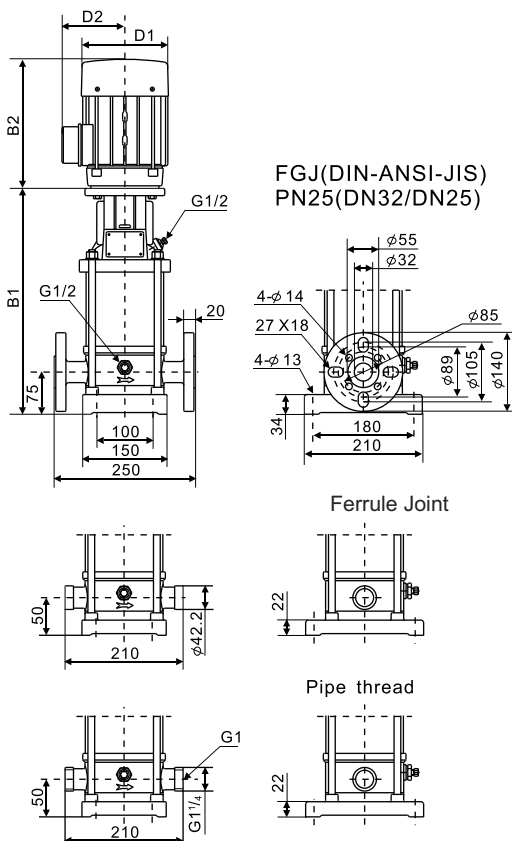
DMV-2

Performance Table

2900 rpm

Model	Motor Power (P ₂)		Q (m ³ /h)	1	1.2	1.6	2.0	2.4	2.8	3.2	3.5
	kW	HP									
DMV-2/02	0.37	0.5	HEAD IN METERS	16	15.5	14.5	13.5	12.5	11	9.5	8
DMV-2/03	0.37	0.5		23	22.5	21	20	18.5	16	14	12
DMV-2/04	0.55	0.75		32	31	30	28	26	23	20	16
DMV-2/05	0.55	0.75		42.5	42	40	37	34.5	30	25	20
DMV-2/06	0.75	1		51	50	47	44	41	36	30	24
DMV-2/07	0.75	1		59	57	55	52	47	41	35	28
DMV-2/09	1.1	1.5		72	71	67	63	58	51	44	36
DMV-2/11	1.1	1.5		87	85	80	74	67	59	50	42
DMV-2/13	1.5	2		106	104	99	90	81	71	60	51
DMV-2/15	1.5	2		121	119	112	105	96	85	72	61
DMV-2/18	2.2	3		143	139	133	125	116	105	91	78
DMV-2/22	2.2	3		173	169	162	152	140	126	110	95
DMV-2/26	3.0	4		206	201	191	180	170	155	133	118

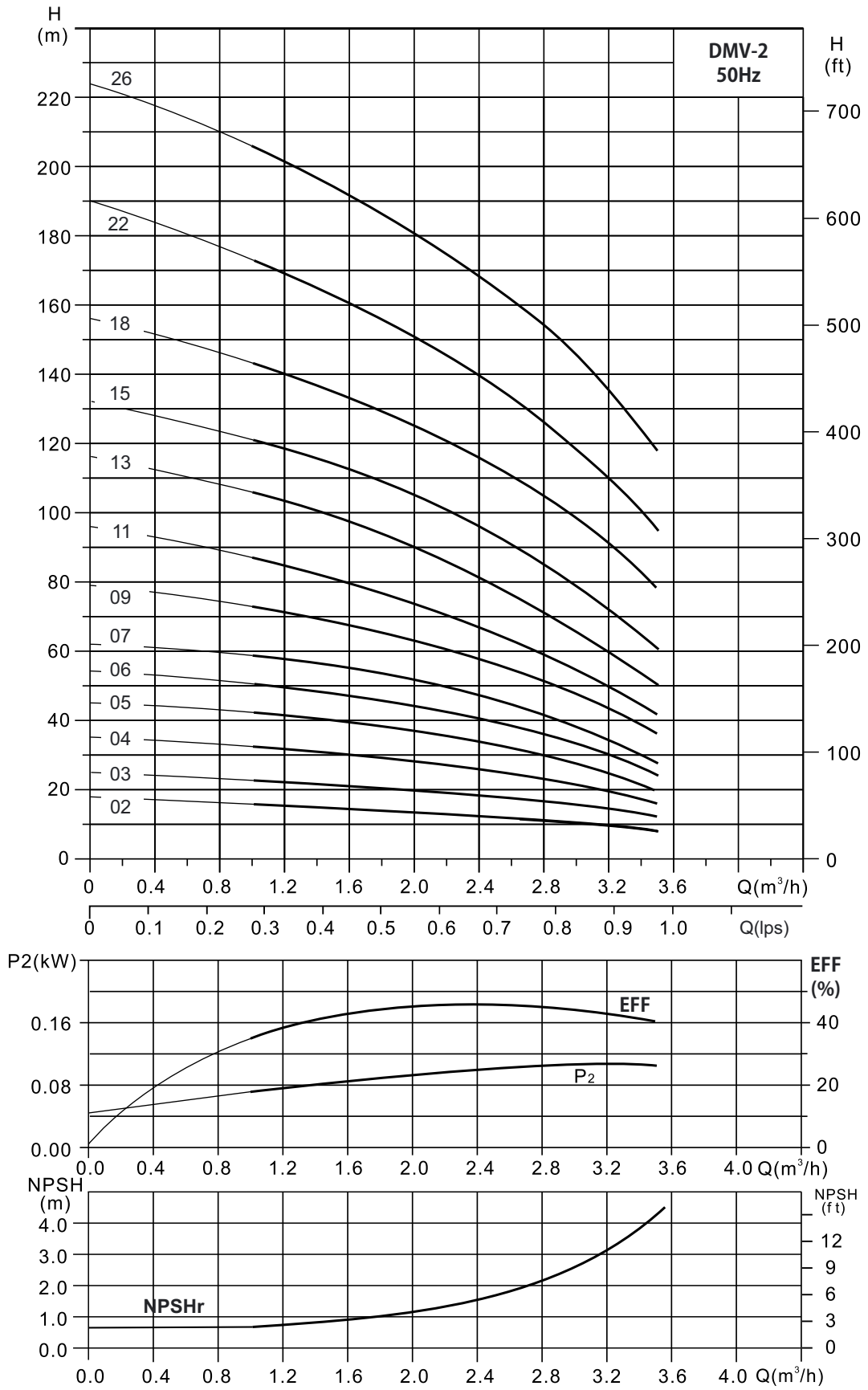
Dimensional Table



Model	Dimensions (mm)					*Weight (kg)
	B1	B2	B1 + B2	D1	D2	
DMV-2/02	259	205	464	133	102/124	21
DMV-2/03	277	205	482	133	102/124	21
DMV-2/04	295	205	500	133	102/124	23
DMV-2/05	313	205	518	133	102/124	23
DMV-2/06	331	205	536	133	102/124	25
DMV-2/07	349	205	554	133	102/124	25
DMV-2/09	391	241	532	154	111/133	27
DMV-2/11	427	241	668	154	111/133	27
DMV-2/13	463	241/293	704/756	154/177	111/144.5	29
DMV-2/15	499	241/293	740/792	154/177	111/144.5	29
DMV-2/18	565	275/293	840/856	177	116/144.5	35
DMV-2/22	637	275/293	912	177	116/144.5	38
DMV-2/26	709	293	1002	177	116	45

* The given are indicative nett weights only, the actual gross weight will vary according to the packing materials & MoC. The letter C / S / N to be added in model name as 4th letter for Cast Iron, SS 304, SS 316 constructions respectively.

In the view of our continuous developments the given information / description / specifications / illustrations are subject to change without prior notice.



In the view of our continuous developments the given information / description / specifications / illustrations are subject to change without prior notice.

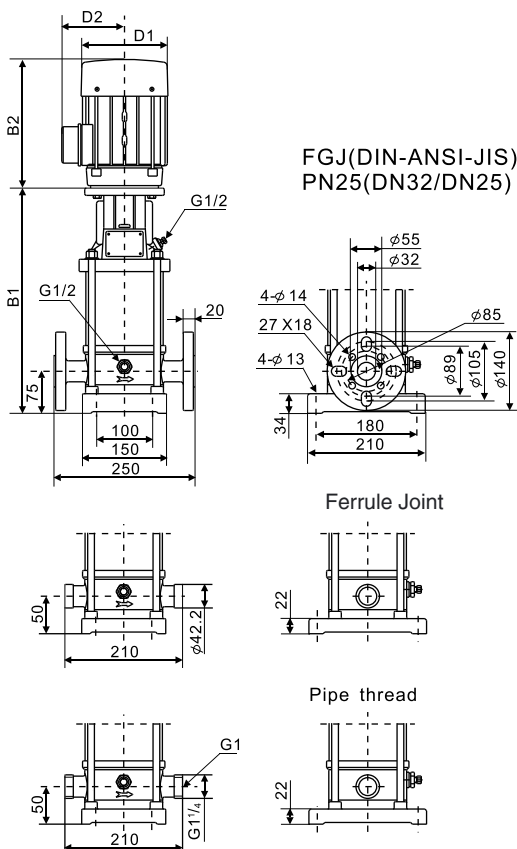
DMV-3

Performance Table

2900 rpm

Model	Motor Power (P ₂)		Q (m ³ /h)	1.2	1.6	2.0	2.4	2.8	3.0	3.2	3.4	3.6	4.0
	kW	HP											
DMV-3/02	0.37	0.5	HEAD IN METERS	12	11.3	10.5	10	9	8.5	8	7.5	7	6
DMV-3/03	0.37	0.5		18	17	16	15	14	13	12	11	10	8
DMV-3/04	0.37	0.5		24	23	22	20	18.5	17.5	18	15	14	11
DMV-3/05	0.37	0.5		30	28	27	25	23	22	21	19	18	14
DMV-3/06	0.55	0.75		36	34	32	30	28	26	24	22	20	17
DMV-3/07	0.55	0.75		42	41	39	36	33	31	29	26	24	20
DMV-3/08	0.75	1		48	46	44	41	37	35	33	30	27	22
DMV-3/09	0.75	1		53	51	49	46	41.5	39	37	34	32	26
DMV-3/10	0.75	1		59	57	55	51	46	43	41	37	34	28
DMV-3/11	1.1	1.5		65	63	60	56	51	48	45	42	38	30.5
DMV-3/12	1.1	1.5		71	68	66	61	55	52	49	46	42	34
DMV-3/13	1.1	1.5		77	74	71	66	60	57	53	50	46	37
DMV-3/15	1.1	1.5		88	85	82	77	72	69	64	60	55	44
DMV-3/17	1.5	2		100	97	93	88	83	79	74	69	64	52
DMV-3/19	1.5	2		112	108	104	98	92	88	83	77	71	58
DMV-3/21	2.2	3		123	119	115	108	102	97	92	86	79	65
DMV-3/23	2.2	3		134	130	125	119	110	105	100	94	86	72
DMV-3/25	2.2	3		146	141	135	128	118	113	108	102	94	79
DMV-3/27	2.2	3		158	152	146	138	129	123	117	110	103	86
DMV-3/29	2.2	3		169	163	156	147	137	132	125	118	111	93
DMV-3/31	3.0	4		180	174	167	157	147	141	134	126	118	100
DMV-3/33	3.0	4		191	186	178	168	157	150	143	135	127	108
DMV-3/36	3.0	4		209	203	194	184	173	166	159	151	143	122

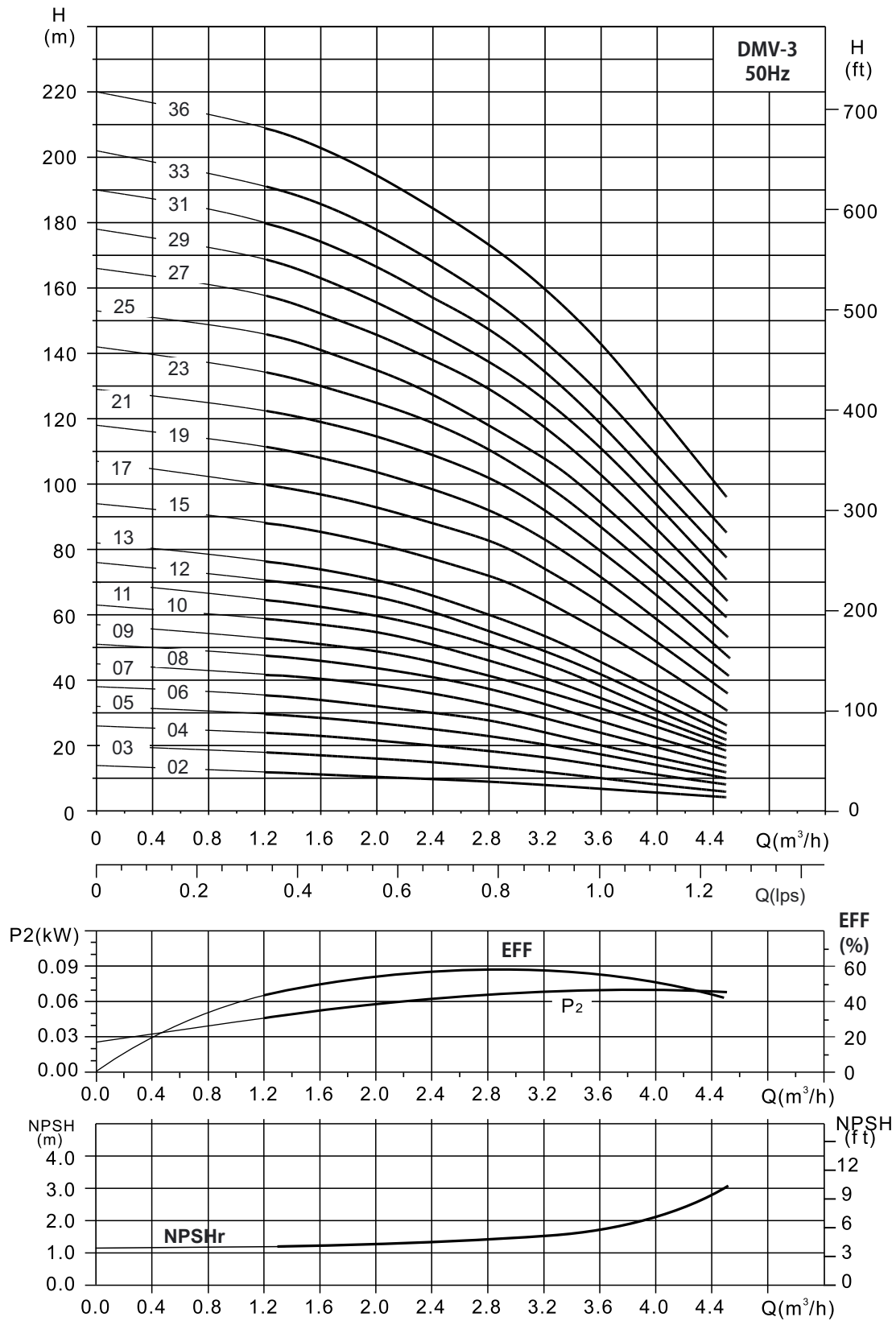
Dimensional Table



Model	Dimensions (mm)					*Weight (kg)
	B1	B2	B1 + B2	D1	D2	
DMV-3/02	259	205	464	133	102	20
DMV-3/03	277	205	482	133	102	20
DMV-3/04	295	205	500	133	102	21
DMV-3/05	313	205	518	133	102	21
DMV-3/06	331	205	536	133	102	22
DMV-3/07	349	205	554	133	102	22
DMV-3/08	367	205	572	133	102	23
DMV-3/09	385	205	590	133	102	24
DMV-3/10	403	205	608	133	102	25
DMV-3/11	427	241	668	154	111	27
DMV-3/12	445	241	686	154	111	27
DMV-3/13	463	241	704	154	111	28
DMV-3/15	499	241	740	154	111	29
DMV-3/17	535	241/293	776/828	154	111	34
DMV-3/19	571	241/293	812/864	154	111	35
DMV-3/21	615	275/293	890/908	177	116	38
DMV-3/23	651	275/293	926/944	177	116	39
DMV-3/25	687	275/293	962/980	177	116	40
DMV-3/27	723	275/293	998/1016	177	116	41
DMV-3/29	759	275/293	1034/1052	177	116	42
DMV-3/31	795	275/293	1070/1080	177	116	47
DMV-3/33	831	275/293	1106/1124	177	116	48
DMV-3/36	885	275/293	1160/1178	177	116	50

* The given are indicative nett weights only, the actual gross weight will vary according to the packing materials & MoC. The letter C / S / N to be added in model name as 4th letter for Cast Iron, SS 304, SS 316 constructions respectively.

In the view of our continuous developments the given information / description / specifications / illustrations are subject to change without prior notice.



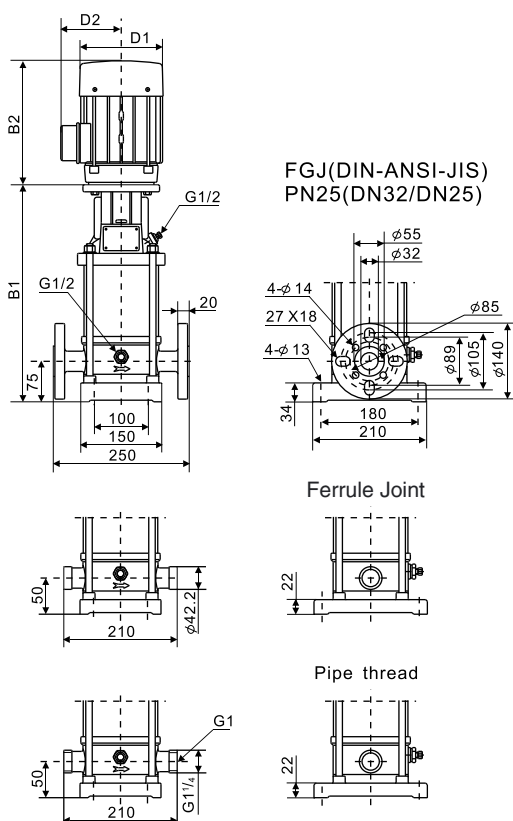
In the view of our continuous developments the given information / description / specifications / illustrations are subject to change without prior notice.

DMV-4

Performance Table

2900 rpm

Model	Motor Power (P ₂)		Q (m ³ /h)	1.0	2.0	3.0	4.0	4.5	5.0	5.5	6.0
	kW	HP									
DMV-4/02	0.37	0.5	HEAD IN METERS	22	21	19.5	18	17	16	14	13
DMV-4/03	0.55	0.75		31	29.5	28	24	22	21	19	18
DMV-4/04	0.75	1		40	38	35	31	29	27	24	22
DMV-4/05	1.1	1.5		50	48	44	40	38	34	30	26
DMV-4/06	1.1	1.5		59	57	53	49	45	41	36	30
DMV-4/07	1.5	2		71	69	65	59	55	50	43	36
DMV-4/08	1.5	2		83	80	78	71	65	59	51	42
DMV-4/10	2.2	3		103	100	95	87	80	79	73	54
DMV-4/12	2.2	3		122	119	113	103	96	88	78	68
DMV-4/14	3.0	4		139	134	128	118	111	102	90	79
DMV-4/16	3.0	4		158	153	145	134	126	116	103	89
DMV-4/19	4.0	5.5		186	180	170	155	145	133	117	98
DMV-4/22	4.0	5.5		216	208	197	182	172	159	143	126

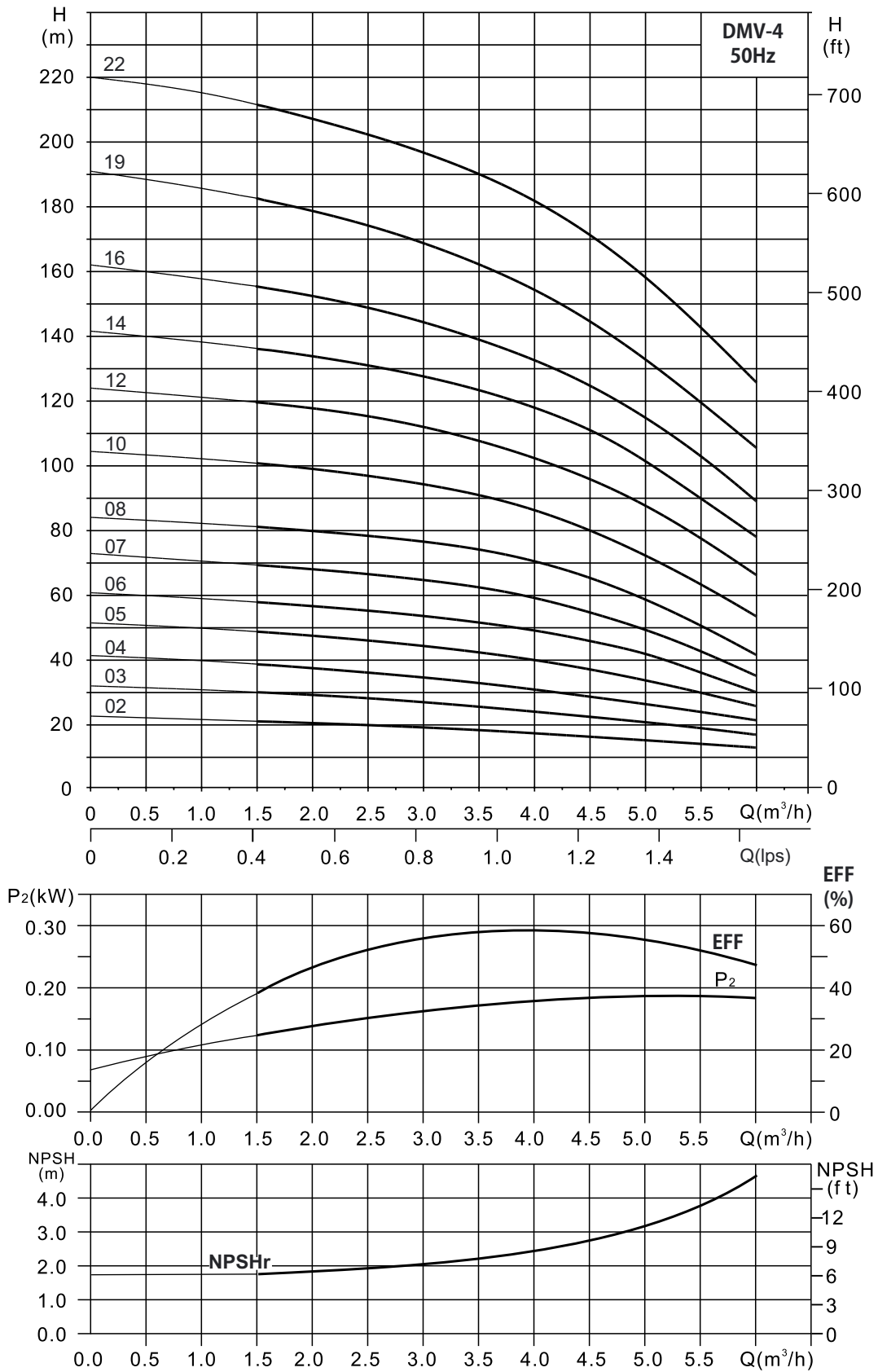


Dimensional Table

Model	Dimensions (mm)					*Weight (kg)
	B1	B2	B1 + B2	D1	D2	
DMV-4/02	259	205	464	133	102	22
DMV-4/03	277	205	482	133	102	22
DMV-4/04	295	205	500	133	102	23
DMV-4/05	319	241	560	154	111	23
DMV-4/06	337	241	578	154	111	25
DMV-4/07	355	241/293	596/648	154	111	30
DMV-4/08	373	241/293	614/666	154	111	30
DMV-4/10	417	275/293	692/710	177	116	32
DMV-4/12	453	275/293	728/746	177	116	32
DMV-4/14	489	275/293	764/782	177	116	35
DMV-4/16	525	275/293	800/818	197	116	39
DMV-4/19	599	305	904	197	148	45
DMV-4/22	653	305	958	197	148	49

* The given are indicative nett weights only, the actual gross weight will vary according to the packing materials & MoC. The letter C / S / N to be added in model name as 4th letter for Cast Iron, SS 304, SS 316 constructions respectively.

In the view of our continuous developments the given information / description / specifications / illustrations are subject to change without prior notice.



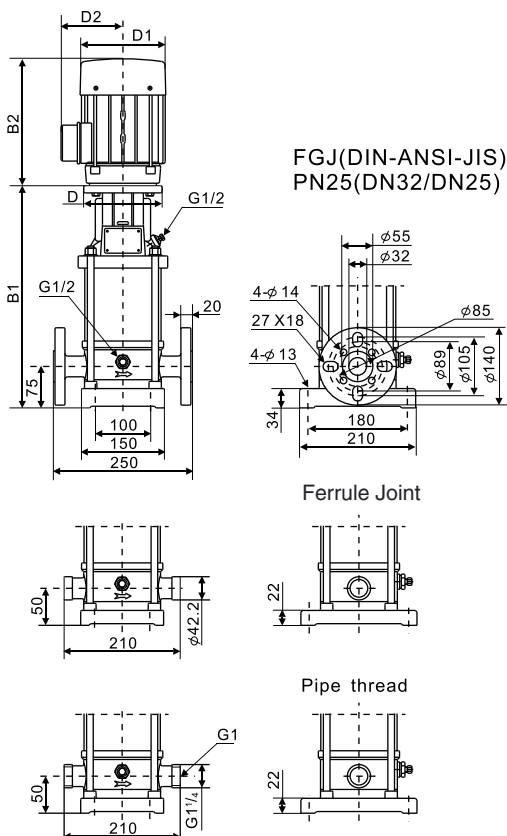
In the view of our continuous developments the given information / description / specifications / illustrations are subject to change without prior notice.

DMV-5

Performance Table

2900 rpm

Model	Motor Power (P ₂)		Q (m ³ /h)	2.0	3.0	4.0	4.5	5.0	5.5	6.0	6.5	7.0	7.5	8.5
	kW	HP		HEAD IN METERS										
DMV-5/02	0.37	0.5		14	13	12	11.5	11	10	9	8	7.5	6.5	6
DMV-5/03	0.55	0.75		19	18	17	15.5	15	14	13	12	11	9	8
DMV-5/04	0.55	0.75		24	23	22	21	20	18.5	17	16	14	12.5	11
DMV-5/05	0.75	1		30	29	27	26	24.5	23	21.5	20	17.5	16	14
DMV-5/06	1.1	1.5		37	35	33	31.5	30	28	26	24	22	20	18
DMV-5/07	1.1	1.5		43	41	39	37	35	33	31	28	26	24	21
DMV-5/08	1.1	1.5		49	47	44	42	40	38	36	32	30	27	24
DMV-5/09	1.5	2		56	53	50	47.5	45	42.5	40	37	33.5	30.5	27
DMV-5/10	1.5	2		62	59	55	53	50	47	44	41	37	34	30
DMV-5/11	2.2	3		69	66	61.5	59	56	52	49	45	41	37	33
DMV-5/12	2.2	3		75	73	68	65	62	58	54	49	45	40.5	36
DMV-5/13	2.2	3		82	79	74	71	68	64	60	54	49	44	39
DMV-5/14	2.2	3		89	85	81	77	74	69	65	59	54	48	42
DMV-5/15	2.2	3		96	93	88	84	80	75	70	64	59	52	45
DMV-5/16	2.2	3		103	100	94	90	85	80	75	69	63	56	48
DMV-5/18	3.0	4		115	110	104	100	96	90	85	78	71	63	54
DMV-5/20	3.0	4		129	122	115	109	105	99	94	86	78	70	60
DMV-5/22	4.0	5.5		139	134	126	121	116	110	103	95	87	77	66
DMV-5/24	4.0	5.5		152	146	138	133	127	120	113	105	96	84	72
DMV-5/26	4.0	5.5		164	158	150	144	138	131	122	114	104	91	78
DMV-5/29	4.0	5.5		185	177	168	164	157	150	141	132	119	103	87
DMV-5/32	5.5	7.5		205	197	189	183	176	166	158	147	134	114	96
DMV-5/36	5.5	7.5		230	222	212	205	198	188	177	166	154	133	108

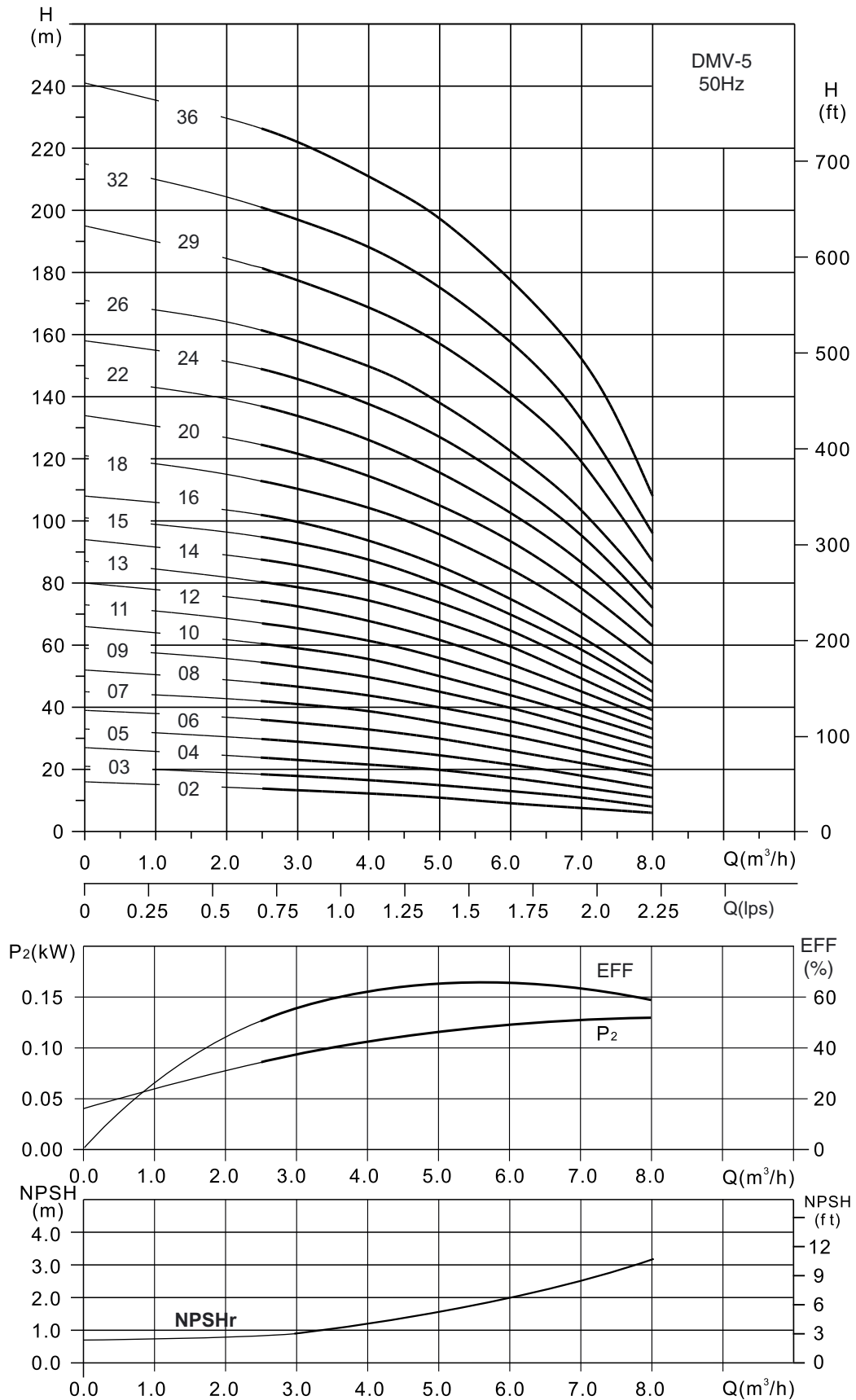


Dimensional Table

Model	Dimensions (mm)						*Weight (kg)
	B1	B2	B1 + B2	D	D1	D2	
DMV-5/02	277	205	482	-	133	102	21
DMV-5/03	304	205	509	-	133	102	21
DMV-5/04	331	205	536	-	133	102	22
DMV-5/05	358	205	563	-	133	102	24
DMV-5/06	391	241	632	-	154	111	27
DMV-5/07	418	241	659	-	154	111	28
DMV-5/08	445	241	686	-	154	111	29
DMV-5/09	472	241/293	713/765	-	154	111	35
DMV-5/10	499	241/293	740/792	-	154	111	36
DMV-5/11	534	275/293	809/827	-	177	116	37
DMV-5/12	561	275/293	836/854	-	177	116	38
DMV-5/13	588	275/293	863/881	-	177	116	39
DMV-5/14	615	275/293	890/908	-	177	116	40
DMV-5/15	642	275/293	917/935	-	177	116	41
DMV-5/16	669	275/293	944/962	-	177	116	42
DMV-5/18	723	293	982	-	177	116	45
DMV-5/20	777	293	1052	-	177	116	46
DMV-5/22	851	305	1156	-	197	148	58
DMV-5/24	905	305	1210	-	197	148	59
DMV-5/26	959	305	1264	-	197	148	61
DMV-5/29	1040	305	1345	-	197	148	63
DMV-5/32	1146	390	1536	300	275	210	78
DMV-5/36	1254	390	1644	300	275	210	80

* The given are indicative nett weights only, the actual gross weight will vary according to the packing materials & MoC. The letter C / S / N to be added in model name as 4th letter for Cast Iron, SS 304, SS 316 constructions respectively.

In the view of our continuous developments the given information / description / specifications / illustrations are subject to change without prior notice.



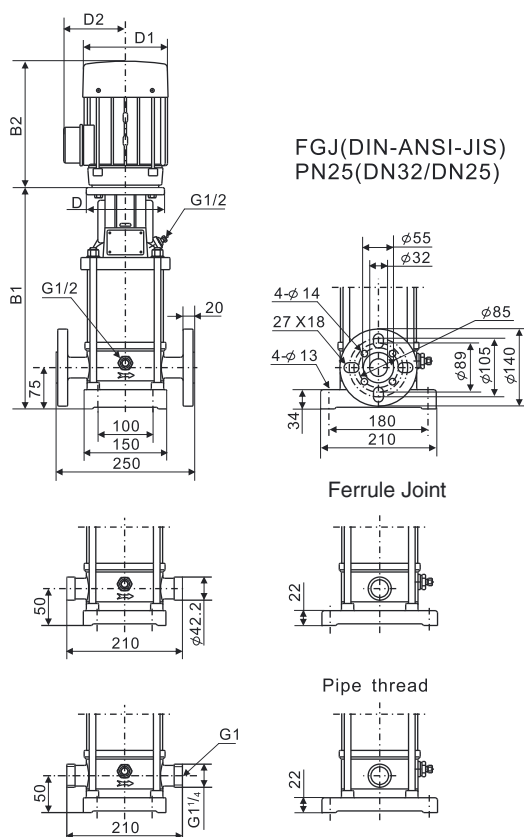
In the view of our continuous developments the given information / description / specifications / illustrations are subject to change without prior notice.

DMV-10

Performance Table

2900 rpm

Model	Motor Power (P ₂)		Q (m ³ /h)	2	4	6	8	10	12	14
	kW	HP								
DMV-10/01	0.37	0.5	HEAD IN METERS	13	12	11	9.5	8.5	7	6
DMV-10/02	0.75	1		23	22	20	18	16	13	10
DMV-10/03	1.1	1.5		33	32	31	28	25	21	16
DMV-10/04	1.5	2		43	42	40	37	32	27	20
DMV-10/05	2.2	3		53	51	48	44	39	32	24
DMV-10/06	2.2	3		62	61	58	53	46	38	28
DMV-10/07	3.0	4		73	72	67	61	54	43	32
DMV-10/08	3.0	4		83	81	78	71	62	51	37
DMV-10/09	3.0	4		93	91	87	81	71	59	42
DMV-10/10	4.0	5.5		104	101	98	91	81	67	47
DMV-10/12	4.0	5.5		123	121	117	108	95	78	55
DMV-10/14	5.5	7.5		143	141	136	124	110	90	63
DMV-10/16	5.5	7.5		163	161	154	143	125	102	71
DMV-10/18	7.5	10		183	179	173	161	144	118	82
DMV-10/20	7.5	10		202	198	191	180	160	133	93
DMV-10/22	7.5	10		222	217	209	198	178	149	106

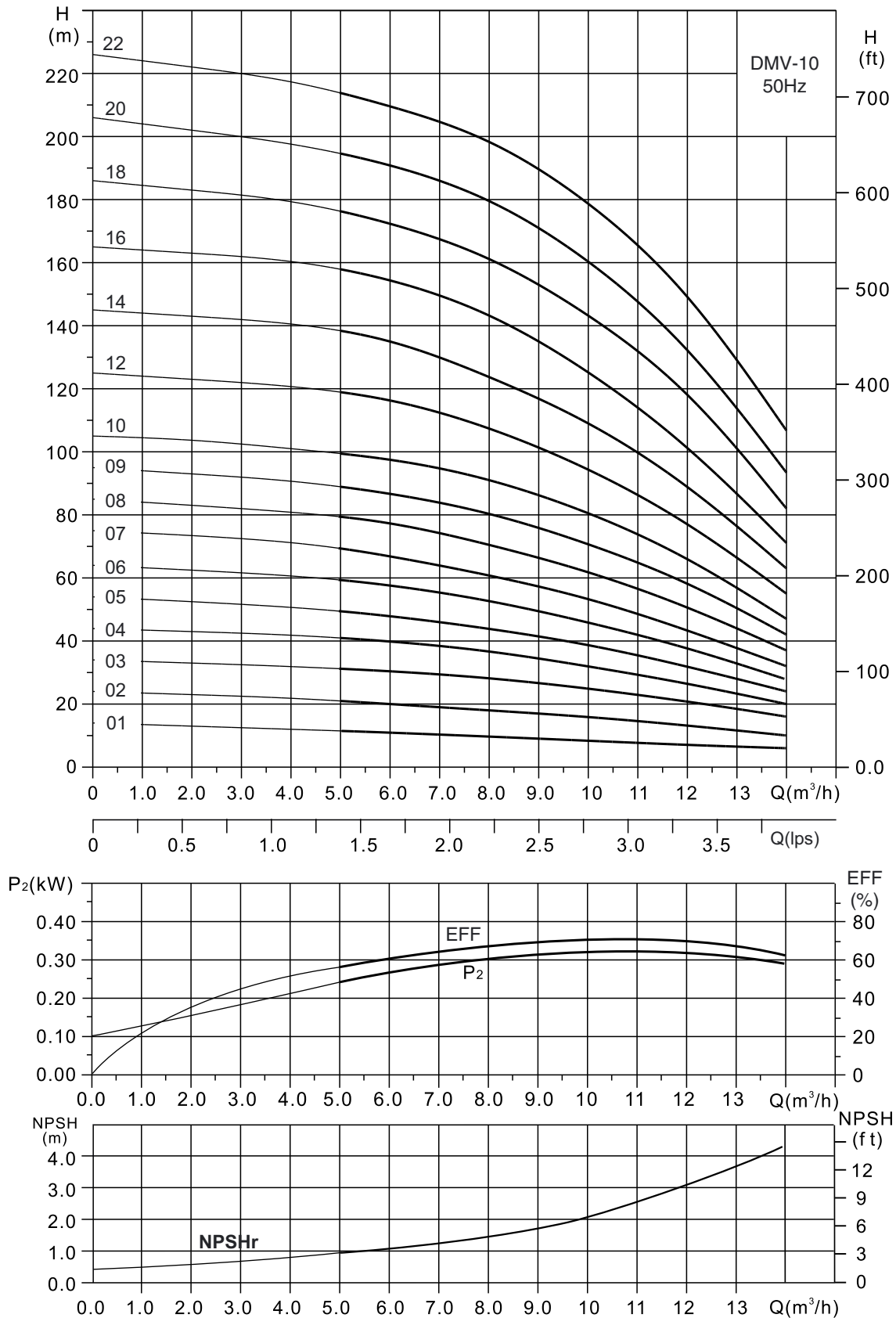


Dimensional Table

Model	Dimensions (mm)						*Weight (kg)
	B1	B2	B1 + B2	D	D1	D2	
DMV-10/01	319	205	524	-	133	102/124	33
DMV-10/02	349	205	554	-	133	102/124	35
DMV-10/03	385	241	626	-	154	111/133	38
DMV-10/04	415	241/293	656/708	-	154/177	111/144.5	45
DMV-10/05	453	275/293	728/746	-	177	116/144.5	48
DMV-10/06	483	275/293	758/776	-	177	116/144.5	50
DMV-10/07	513	293	788	-	177	116	55
DMV-10/08	543	293	815	-	177	116	56
DMV-10/09	573	293	845	-	177	116	57
DMV-10/10	623	305	928	-	197	148	60
DMV-10/12	683	305	988	-	197	148	63
DMV-10/14	764	390	1154	300	275	210	93
DMV-10/16	824	390	1214	300	275	210	95
DMV-10/18	884	390	1274	300	275	210	120
DMV-10/20	944	390	1334	300	275	210	123
DMV-10/22	1004	390	1364	300	275	210	125

* The given are indicative nett weights only, the actual gross weight will vary according to the packing materials & MoC. The letter C / S / N to be added in model name as 4th letter for Cast Iron, SS 304, SS 316 constructions respectively.

In the view of our continuous developments the given information / description / specifications / illustrations are subject to change without prior notice.



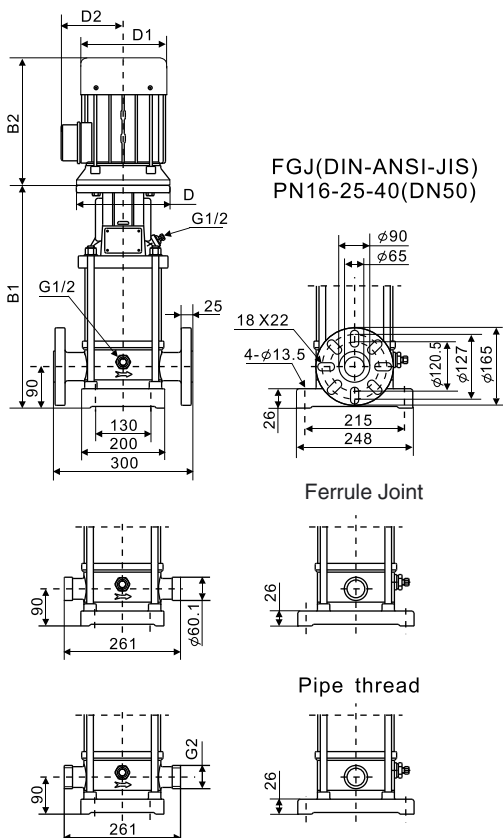
In the view of our continuous developments the given information / description / specifications / illustrations are subject to change without prior notice.

DMV-15

Performance Table

2900 rpm

Model	Motor Power (P ₂)		Q (m ³ /h)	8.0	10	12	14	15	16	18	20	22	24
	kW	HP		HEAD IN METERS									
DMV-15/01	1.1	1.5		14	13	12	11.5	11	10.5	10	9	8	7
DMV-15/02	2.2	3		26	25	24	23	22	21	20	18	16	14
DMV-15/03	3.0	4		39	38	37	34	33	31	29	27	24	20
DMV-15/04	4.0	5.5		52	50	48	46	44	43	40	36	31	26
DMV-15/05	4.0	5.5		66	64	61	58	56	54	50	45	39	33
DMV-15/06	5.5	7.5		80	78	75	70	67	65	60	54	47	41
DMV-15/07	5.5	7.5		94	92	88	83	80	78	71	64	56	50
DMV-15/08	7.5	10		108	105	101	96	93	90	73	75	66	57
DMV-15/09	7.5	10		122	119	115	109	106	103	95	87	77	66
DMV-15/10	11	15		136	133	128	123	120	116	107	98	86	76
DMV-15/12	11	15		158	155	150	144	140	135	126	116	102	89
DMV-15/14	11	15		183	178	172	165	162	156	145	133	118	103
DMV-15/16	15	20		210	204	197	190	185	179	168	153	137	118
DMV-15/17	15	20		224	218	212	203	198	193	181	166	151	129

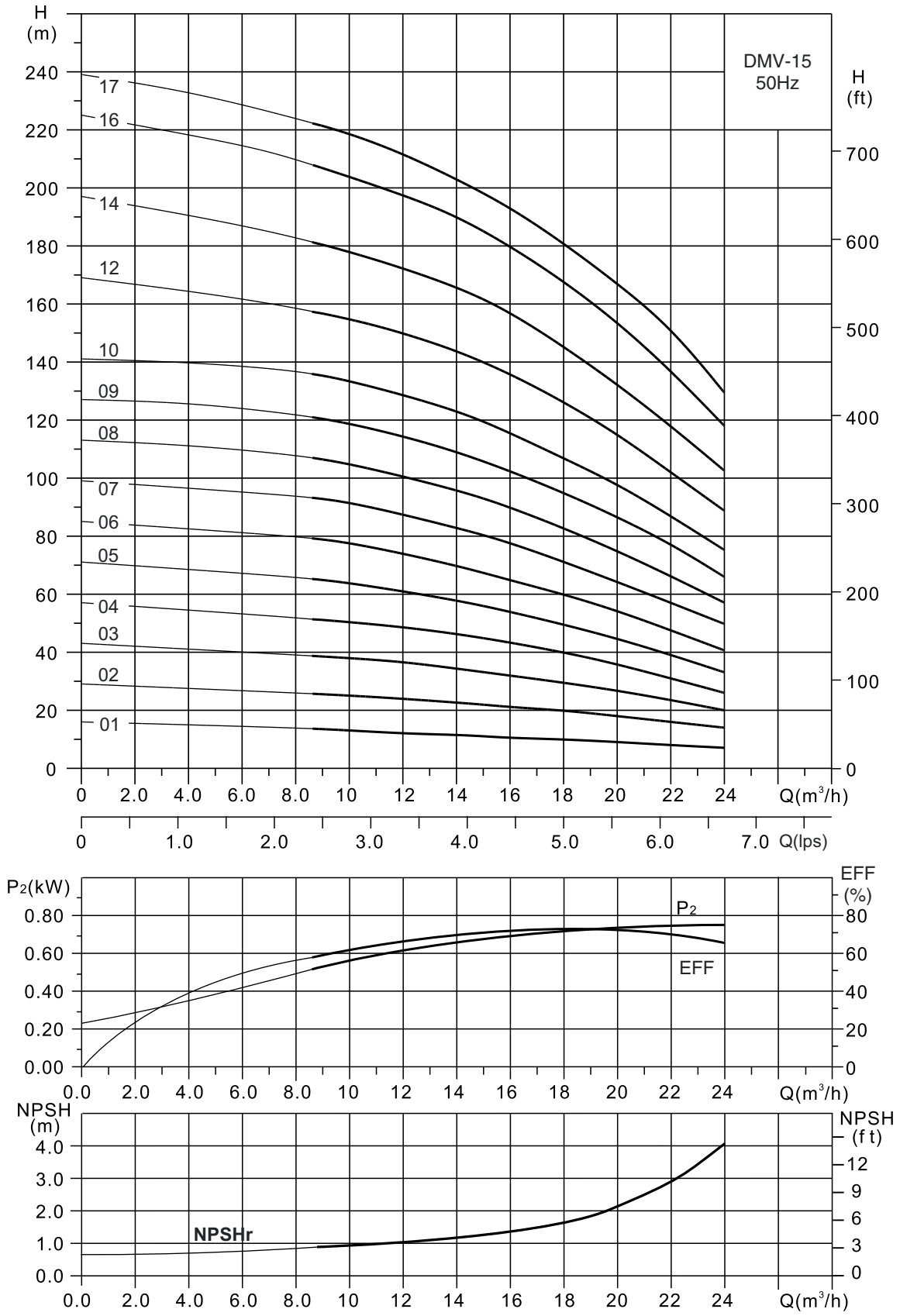


Dimensional Table

Model	Dimensions (mm)						*Weight (kg)
	B1	B2	B1 + B2	D	D1	D2	
DMV-15/01	350	241	591	-	154	111	40
DMV-15/02	403	275/293	678/696	-	177	116	45
DMV-15/03	448	293	723	-	177	116	50
DMV-15/04	513	305	768	-	197	148	55
DMV-15/05	558	305	863	-	197	148	58
DMV-15/06	624	390	1014	300	275	210	90
DMV-15/07	669	390	1059	300	275	210	93
DMV-15/08	714	390	1104	300	275	210	97
DMV-15/09	759	390	1149	300	275	210	98
DMV-15/10	824	505	1325	350	330	255	140
DMV-15/12	914	505	1415	350	330	255	144
DMV-15/14	1004	505	1505	350	330	255	147
DMV-15/16	1094	505	1595	350	330	255	148
DMV-15/17	1139	505	1640	350	330	255	160

* The given are indicative nett weights only, the actual gross weight will vary according to the packing materials & MoC. The letter C / S / N to be added in model name as 4th letter for Cast Iron, SS 304, SS 316 constructions respectively.

In the view of our continuous developments the given information / description / specifications / illustrations are subject to change without prior notice.



In the view of our continuous developments the given information / description / specifications / illustrations are subject to change without prior notice.

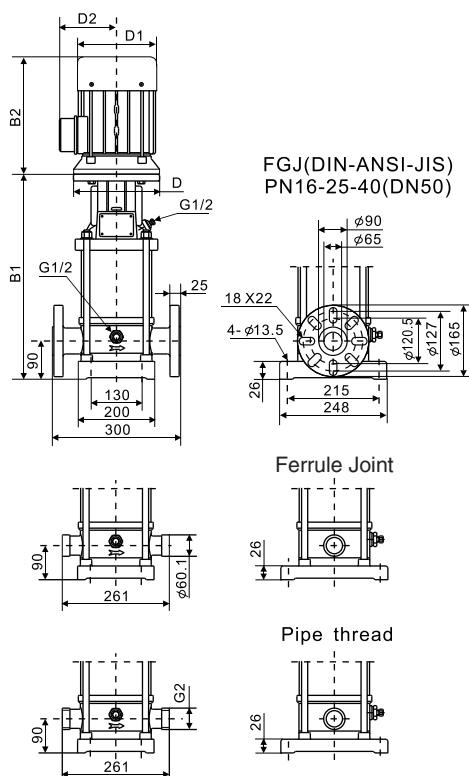
DMV-20

Performance Table

2900 rpm

Model	Motor Power (P ₂)		Q (m ³ /h)	8	10	12	14	16	18	20	24	26	28
	kW	HP		HEAD IN METERS									
DMV-20/01	1.1	1.5		14	13.5	13	12.5	12	11.5	10.5	9	8	7
DMV-20/02	2.2	3		28	27	26	25	24	22.5	21	18	16	14
DMV-20/03	4.0	5.5		41	40	39	38	36	34	32	27	24	21
DMV-20/04	5.5	7.5		54	53	52	51	50	46	43	36	32	27
DMV-20/05	5.5	7.5		68	67	65	63	61	58	55	45	40	33
DMV-20/06	7.5	10		82	80	78	77	73	70	66	55	48	40
DMV-20/07	7.5	10		96	94	92	89	86	82	77	65	58	47
DMV-20/08	11	15		110	107	104	102	99	95	89	76	67	56
DMV-20/10	11	15		137	135	132	127	124	118	112	98	86	73
DMV-20/12	15	20		164	162	158	154	149	142	136	118	106	90
DMV-20/14	15	20		191	189	186	181	176	169	161	140	126	110
DMV-20/16	18.5	25		219	217	214	208	203	198	186	164	147	129
DMV-20/17	18.5	25		234	231	228	223	217	210	202	178	162	142

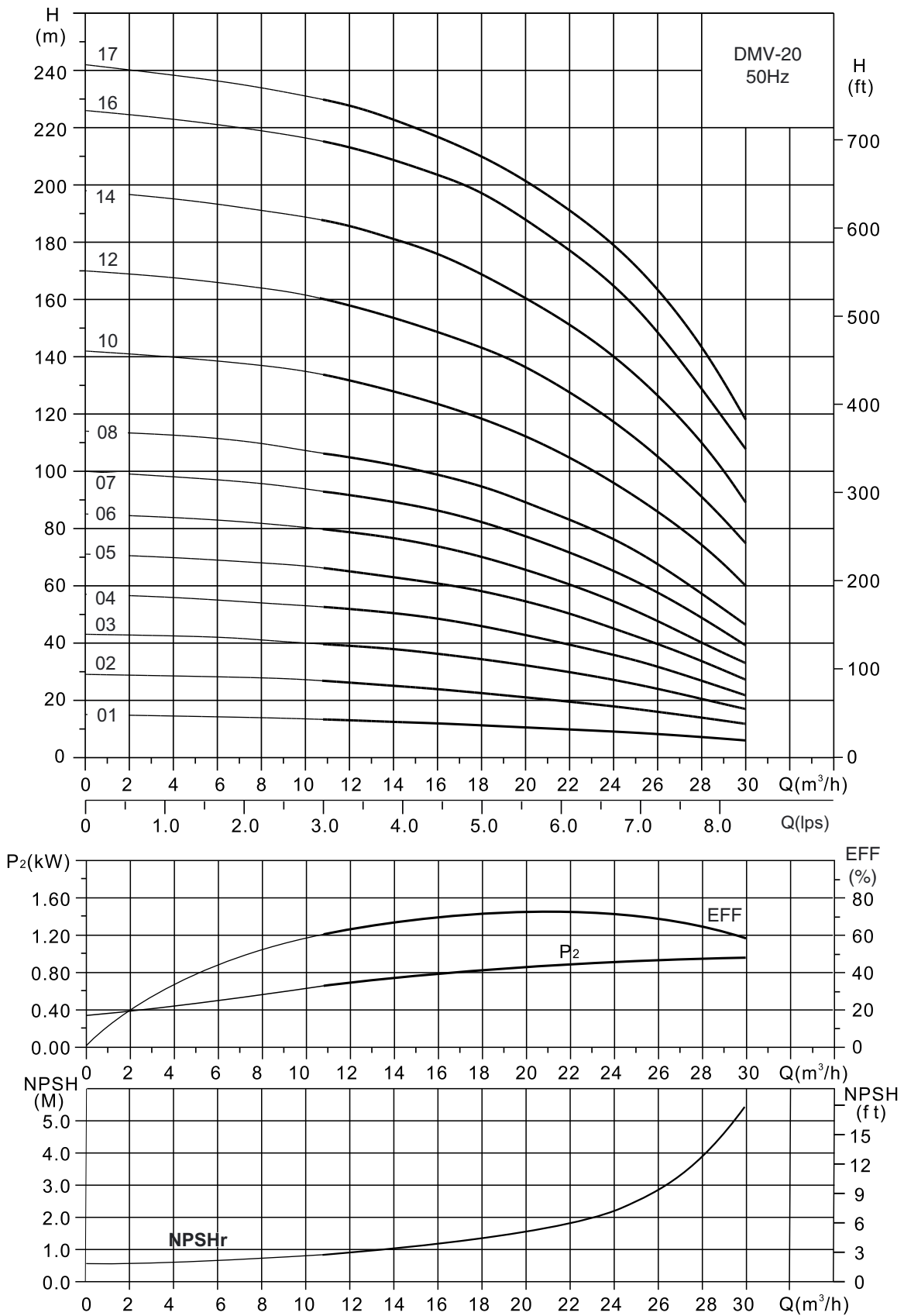
Dimensional Table



Model	Dimensions (mm)						*Weight (kg)
	B1	B2	B1 + B2	D	D1	D2	
DMV-20/01	350	241	591	-	154	111	40
DMV-20/02	403	275/293	678/696	-	177	116	45
DMV-20/03	468	305	773	300	197	148	55
DMV-20/04	534	305	839	300	197	148	80
DMV-20/05	579	390	969	300	275	210	83
DMV-20/06	624	390	1014	300	275	210	87
DMV-20/07	669	390	1059	300	275	210	90
DMV-20/08	734	505	1239	350	330	255	130
DMV-20/10	824	505	1329	350	330	255	136
DMV-20/12	914	505	1419	350	330	255	145
DMV-20/14	1004	505	1509	350	330	255	148
DMV-20/16	1094	560	1654	350	330	255	168
DMV-20/17	1139	560	1699	350	330	255	170

* The given are indicative nett weights only, the actual gross weight will vary according to the packing materials & MoC. The letter C / S / N to be added in model name as 4th letter for Cast Iron, SS 304, SS 316 constructions respectively.

In the view of our continuous developments the given information / description / specifications / illustrations are subject to change without prior notice.



In the view of our continuous developments the given information / description / specifications / illustrations are subject to change without prior notice.

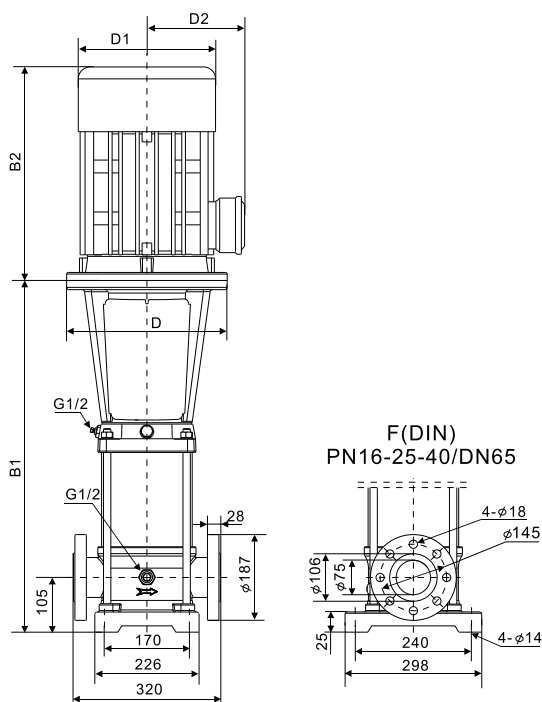
DMV-32

Performance Table

2900 rpm

Model	Motor Power (P ₂)		Q (m ³ /h)	12	16	20	24	28	30	32	36	40
	kW	HP		HEAD IN METERS								
DMV-32/01R1	1.5	2	14.5	14	13	12	11	105	10	9	7	
DMV-32/01	2.2	3	19	18	16.5	15.5	14.5	14	13	11.5	9.5	
DMV-32/02R2	3.0	4	30	26	26	24	22	21	19	16	14	
DMV-32/02	4.0	5.5	36	34	32	30	27	26	24	21	17	
DMV-32/03R2	4.0	5.5	48	45	42	39	36	34	32	27	21	
DMV-32/03	5.5	7.5	54	52	49	46	42	39	37	31	25	
DMV-32/04R2	7.5	10	66	63	59	55	50	47	44	38	29	
DMV-32/04	7.5	10	72	69	66	62	56	53	50	42	34	
DMV-32/05R2	11	15	84	80	76	71	64	61	57	48	37	
DMV-32/05	11	15	91	87	83	78	71	66	62	53	42	
DMV-32/06R2	11	15	101	97	92	87	79	75	70	59	47	
DMV-32/06	11	15	109	105	101	95	87	83	77	65	52	
DMV-32/07R2	15	20	119	115	110	105	96	90	84	71	57	
DMV-32/07	15	20	127	123	118	112	103	97	91	78	61	
DMV-32/08R2	15	20	136	132	127	120	110	104	97	82	66	
DMV-32/08	15	20	143	139	134	126	117	111	104	88	70	
DMV-32/09R2	18.5	25	153	149	144	137	126	119	112	95	75	
DMV-32/09	18.5	25	161	157	152	145	134	126	119	102	80	
DMV-32/10R2	18.5	25	172	168	162	154	143	135	127	108	84	
DMV-32/10	18.5	25	179	174	169	162	149	142	134	114	88	
DMV-32/11R2	22	30	189	184	178	170	158	149	141	120	93	
DMV-32/11	22	30	197	192	186	178	165	157	148	126	97	
DMV-32/12R2	22	30	207	202	196	187	174	165	155	132	102	
DMV-32/12	22	30	214	210	203	194	180	171	161	137	107	
DMV-32/13R2	30	40	225	220	213	203	188	179	169	143	112	
DMV-32/13	30	40	232	227	220	210	197	187	177	150	118	
DMV-32/14R2	30	40	243	238	230	220	206	197	185	156	124	
DMV-32/14	30	40	250	245	237	227	212	203	192	163	130	

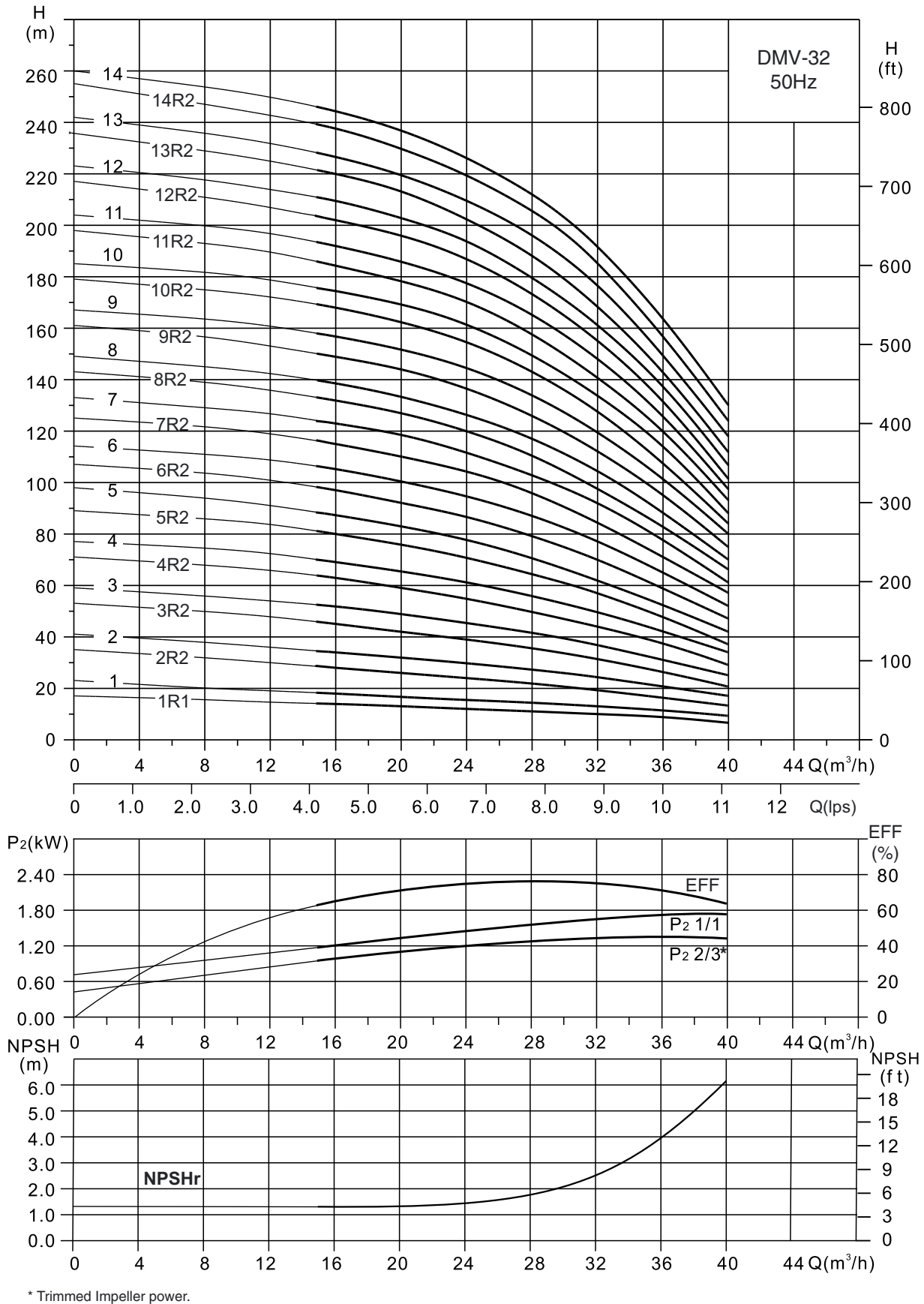
Dimensional Table



Model	Dimensions (mm)						*Weight (kg)
	B1	B2	B1 + B2	D	D1	D2	
DMV-32/01R1	455	241/293	696/748	-	154	111	60
DMV-32/01	455	275/293	730/748	-	177	116	61
DMV-32/02R2	525	293	800	-	177	116	75
DMV-32/02	525	305	830	-	197	148	86
DMV-32/03R2	595	305	900	-	197	148	105
DMV-32/03	620	390	1010	300	275	210	105
DMV-32/04R2	690	390	1080	300	275	210	116
DMV-32/04	690	390	1080	300	275	210	117
DMV-32/05R2	915	505	1420	350	330	255	170
DMV-32/05	915	505	1420	350	330	255	171
DMV-32/06R2	985	505	1490	350	330	255	176
DMV-32/06	985	505	1490	350	330	255	176
DMV-32/07R2	1055	505	1560	350	330	255	206
DMV-32/07	1055	505	1560	350	330	255	207
DMV-32/08R2	1125	505	1630	350	330	255	208
DMV-32/08	1125	505	1630	350	330	255	209
DMV-32/09R2	1195	560	1750	350	330	255	225
DMV-32/09	1195	560	1750	350	330	255	226
DMV-32/10R2	1265	560	1820	350	330	255	230
DMV-32/10	1265	560	1820	350	330	255	231
DMV-32/11R2	1335	590	1925	350	380	280	270
DMV-32/11	1335	590	1925	350	380	280	271
DMV-32/12R2	1405	590	1995	350	380	280	275
DMV-32/12	1405	590	1995	350	380	280	276
DMV-32/13R2	1475	660	2135	400	420	305	395
DMV-32/13	1475	660	2135	400	420	305	395
DMV-32/14R2	1525	660	2185	400	420	305	400
DMV-32/14	1525	660	2185	400	420	305	400

* The given are indicative nett weights only, the actual gross weight will vary according to the packing materials & MoC.
The letter C / S / N to be added in model name as 4th letter for Cast Iron, SS 304, SS 316 constructions respectively.

In the view of our continuous developments the given information / description / specifications / illustrations are subject to change without prior notice.



In the view of our continuous developments the given information / description / specifications / illustrations are subject to change without prior notice.

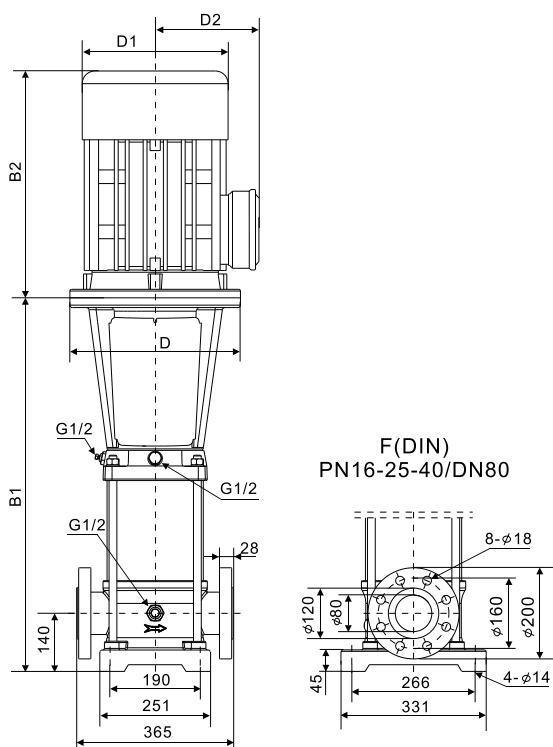
DMV-45

Performance Table

2900 rpm

Model	Motor Power (P ₂)		Q (m ³ /h)	25	30	35	40	45	50	55
	kW	HP								
DMV-45/01R1	3.0	4	HEAD IN METERS	20	19	18	17	15	13	11
DMV-45/01	4.0	5.5		24	23	22	21	19	18	16
DMV-45/02R2	5.5	7.5		40	38	36	33	30	27	23
DMV-45/02	7.5	10		48	46	44	42	39	35	31
DMV-45/03R2	11	15		63	61	58	54	50	44	38
DMV-45/03	11	15		72	70	67	63	58	53	45
DMV-45/04R2	15	20		87	84	80	75	69	62	54
DMV-45/04	15	20		98	94	87	84	77	70	61
DMV-45/05R2	18.5	25		113	108	102	96	88	80	69
DMV-45/05	18.5	25		123	118	112	105	97	88	77
DMV-45/06R2	22	30		137	132	125	118	109	98	86
DMV-45/06	22	30		147	141	135	127	118	107	94
DMV-45/07R2	30	40		160	154	147	139	128	116	101
DMV-45/07	30	40		169	164	156	147	136	124	109
DMV-45/08R2	30	40		184	178	169	160	147	132	116
DMV-45/08	30	40		194	189	180	168	155	141	124
DMV-45/09R2	30	40		209	202	193	182	169	152	133
DMV-45/09	37	50		219	212	203	191	177	161	141
DMV-45/10R2	37	50		233	225	215	203	188	170	148
DMV-45/10	37	50		245	236	225	212	196	179	156
DMV-45/11R2	45	60	259	250	239	226	209	191	166	
DMV-45/11	45	60	267	259	248	235	217	198	174	
DMV-45/12R2	45	60	284	274	263	248	230	209	183	
DMV-45/12	45	60	295	286	273	259	239	219	192	
DMV-45/13R2	45	60	309	300	286	270	250	227	199	

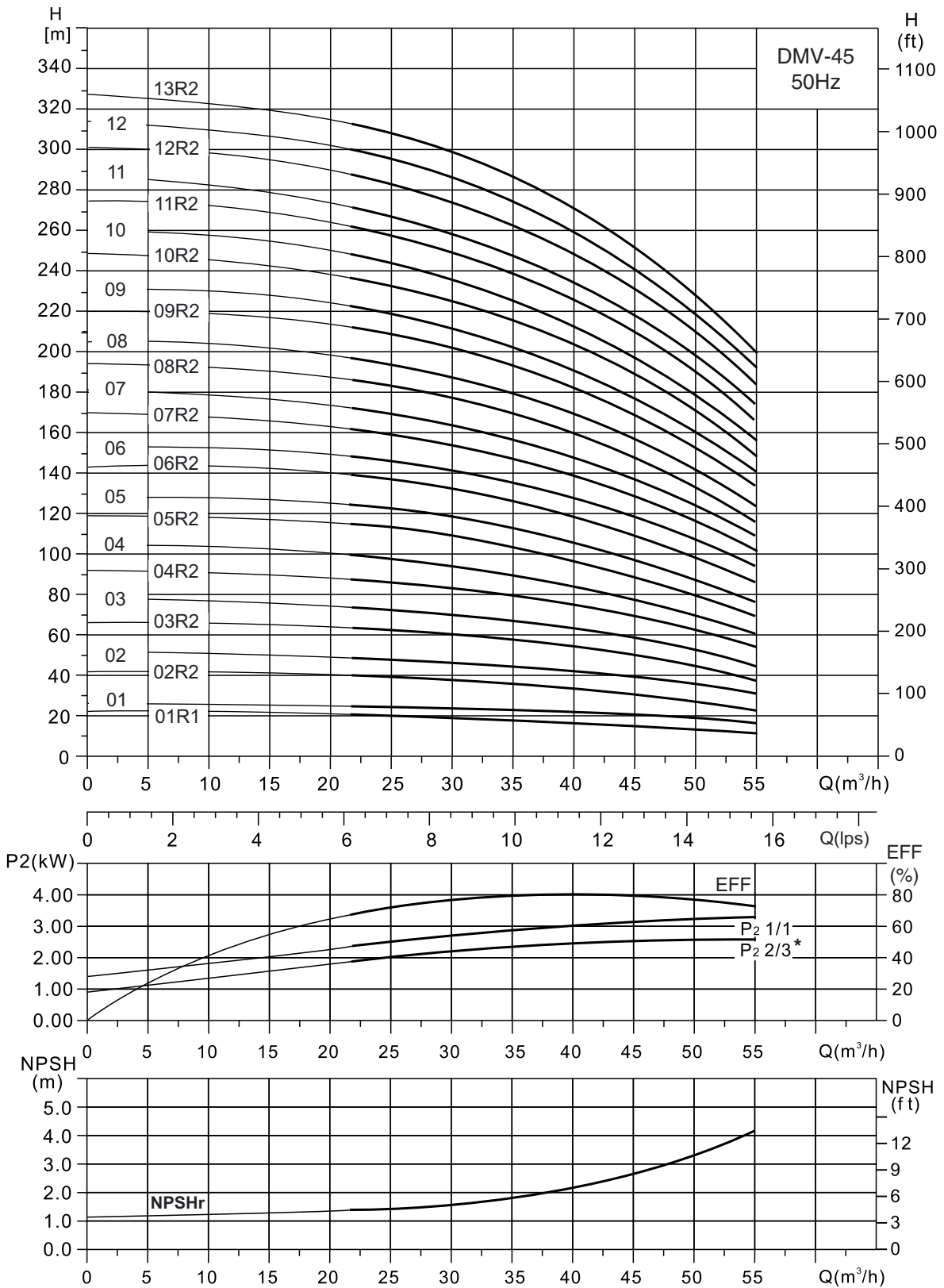
Dimensional Table



Model	Dimensions (mm)						*Weight (kg)
	B1	B2	B1 + B2	D	D1	D2	
DMV-45/01R1	561	293	876	-	197	165	86
DMV-45/01	561	315	876	-	260	165	86
DMV-45/02R2	641	430	1071	300	260	208	102
DMV-45/02	641	430	1071	300	330	208	102
DMV-45/03R2	826	490	1316	350	330	255	175
DMV-45/03	826	490	1316	350	330	255	175
DMV-45/04R2	906	490	1396	350	330	255	187
DMV-45/04	906	490	1396	350	330	255	187
DMV-45/05R2	986	550	1536	350	330	255	208
DMV-45/05	986	550	1536	350	330	255	208
DMV-45/06R2	1066	590	1656	350	360	285	251
DMV-45/06	1066	590	1656	350	360	285	251
DMV-45/07R2	1146	660	1806	400	420	310	315
DMV-45/07	1146	660	1806	400	420	310	315
DMV-45/08R2	1226	660	1886	400	420	310	319
DMV-45/08	1226	660	1886	400	420	310	319
DMV-45/09R2	1306	660	1966	400	420	310	323
DMV-45/09	1306	660	1966	400	420	310	323
DMV-45/10R2	1386	660	2046	400	420	310	347
DMV-45/10	1386	660	2046	400	420	310	347
DMV-45/11R2	1466	700	2166	450	470	345	413
DMV-45/11	1466	700	2166	450	470	345	413
DMV-45/12R2	1546	700	2246	450	470	345	417
DMV-45/12	1546	700	2246	450	470	345	417
DMV-45/13R2	1626	700	2326	450	470	345	421

* The given are indicative nett weights only, the actual gross weight will vary according to the packing materials & MoC.
The letter C / S / N to be added in model name as 4th letter for Cast Iron, SS 304, SS 316 constructions respectively.

In the view of our continuous developments the given information / description / specifications / illustrations are subject to change without prior notice.



* Trimmed Impeller power.

In the view of our continuous developments the given information / description / specifications / illustrations are subject to change without prior notice.

DMV-64

Performance Table

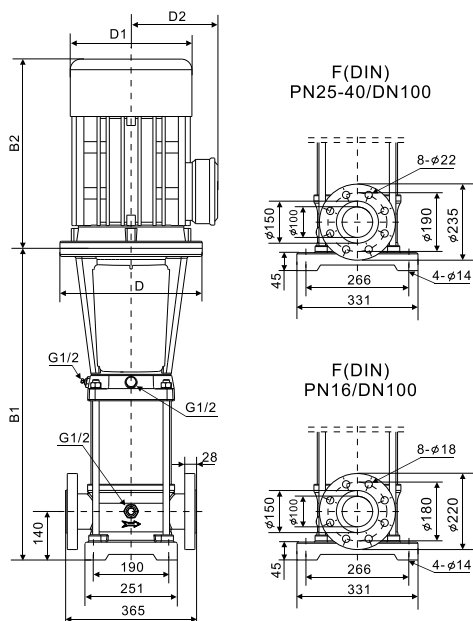
2900 rpm

Model	Motor Power (P ₂)		Q (m ³ /h)	30	40	50	60	64	70	80
	kW	HP								
DMV-64/01R1	4.0	5.5	HEAD IN METERS	19	18	16	14	13	11.5	9
DMV-64/01	5.5	7.5		27	25	23	20	19	17	14
DMV-64/02R2	7.5	10		37	35	32	28	26	23	17
DMV-64/02R1	11	15		47	44	40	36	34	30	24
DMV-64/02	11	15		55	51	47	42	40	37	30
DMV-64/03R2	15	20		66	62	56	50	46	41	32
DMV-64/03R1	15	20		73	69	63	56	53	48	39
DMV-64/03	18.5	25		81	76	70	64	60	55	46
DMV-64/04R2	18.5	25		92	87	80	71	66	60	49
DMV-64/04R1	22	30		100	94	87	78	73	67	54
DMV-64/04	22	30		107	101	94	85	80	74	61
DMV-64/05R2	30	40		119	113	105	95	89	80	64
DMV-64/05R1	30	40		128	121	112	102	96	87	71
DMV-64/05	30	40		136	129	119	109	103	94	78
DMV-64/06R2	30	40		147	140	130	118	112	101	81
DMV-64/06R1	37	50		157	149	138	125	118	108	88
DMV-64/06	37	50		164	156	145	132	125	115	95
DMV-64/07R2	37	50		176	167	156	140	133	121	99
DMV-64/07R1	37	50		185	176	163	147	140	128	106
DMV-64/07	45	60		193	183	170	155	147	135	112
DMV-64/08R2	45	60	204	194	181	164	155	142	116	
DMV-64/08R1	45	60	214	203	189	170	162	149	123	

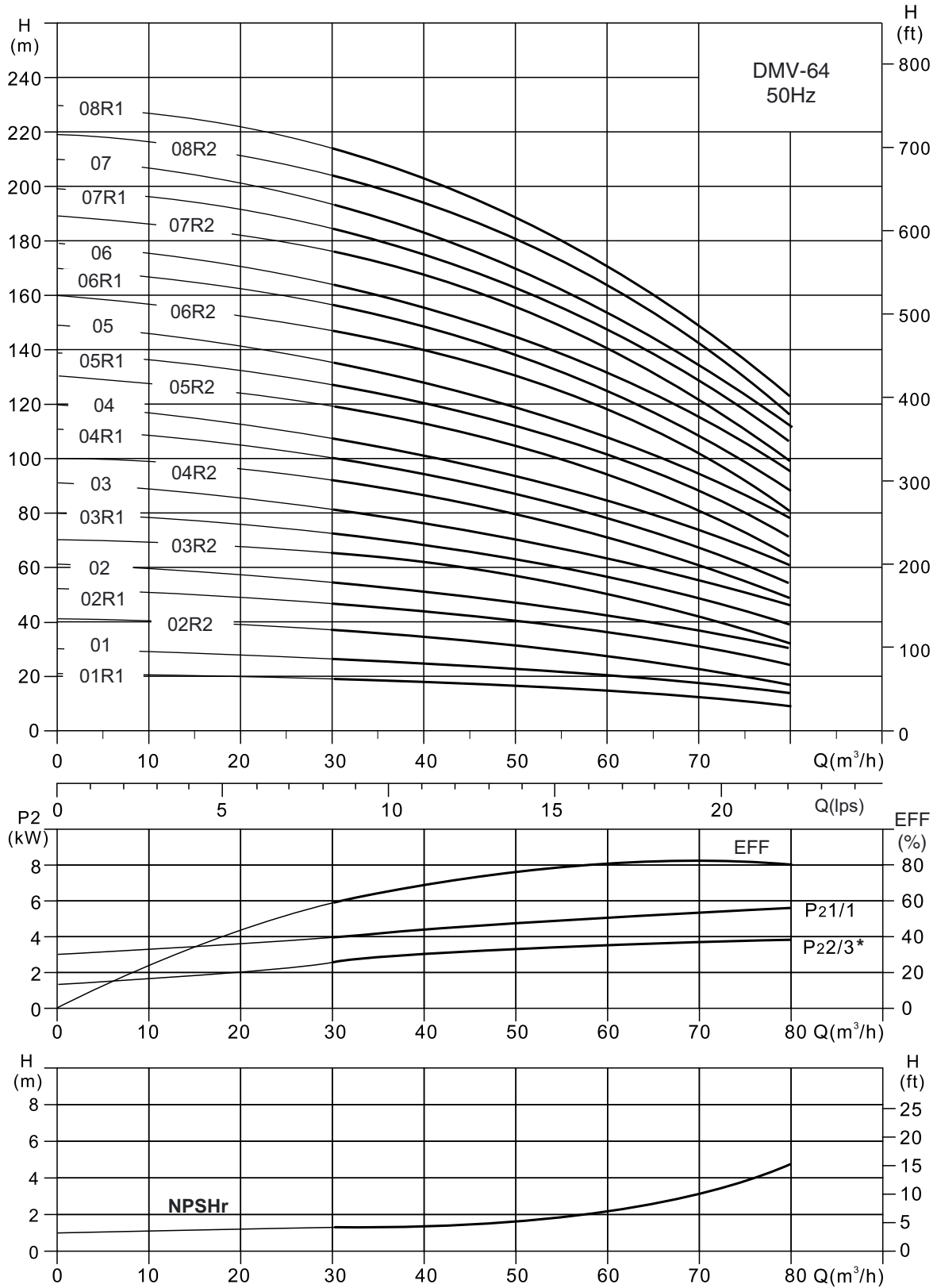
Dimensional Table

Model	Dimensions (mm)						*Weight (kg)
	B1	B2	B1 + B2	D	D1	D2	
DMV-64/01R1	561	335	896	-	230	188	105
DMV-64/01	561	430	991	300	260	208	110
DMV-64/02R2	644	430	1074	300	260	208	120
DMV-64/02R1	754	490	1244	350	330	255	155
DMV-64/02	754	490	1244	350	330	255	155
DMV-64/03R2	836	490	1326	350	330	255	195
DMV-64/03R1	836	490	1326	350	330	255	195
DMV-64/03	836	550	1386	350	330	255	205
DMV-64/04R2	919	550	1469	350	330	255	208
DMV-64/04R1	919	590	1509	350	360	285	260
DMV-64/04	919	590	1509	350	360	285	260
DMV-64/05R2	1001	660	1661	400	420	310	345
DMV-64/05R1	1001	660	1661	400	420	310	345
DMV-64/05	1001	660	1661	400	420	310	345
DMV-64/06R2	1084	660	1744	400	420	310	350
DMV-64/06R1	1084	660	1744	400	420	310	370
DMV-64/06	1084	660	1744	400	420	310	370
DMV-64/07R2	1166	660	1826	400	420	310	375
DMV-64/07R1	1166	660	1826	400	420	310	375
DMV-64/07	1166	700	1866	450	420	310	435
DMV-64/08R2	1248	700	1948	450	470	345	440
DMV-64/08R1	1248	700	1948	450	470	345	440

* The given are indicative nett weights only, the actual gross weight will vary according to the packing materials & MoC.
The letter C / S / N to be added in model name as 4th letter for Cast Iron, SS 304, SS 316 constructions respectively.



In the view of our continuous developments the given information / description / specifications / illustrations are subject to change without prior notice.



* Trimmed Impeller power.

In the view of our continuous developments the given information / description / specifications / illustrations are subject to change without prior notice.

DMV-90

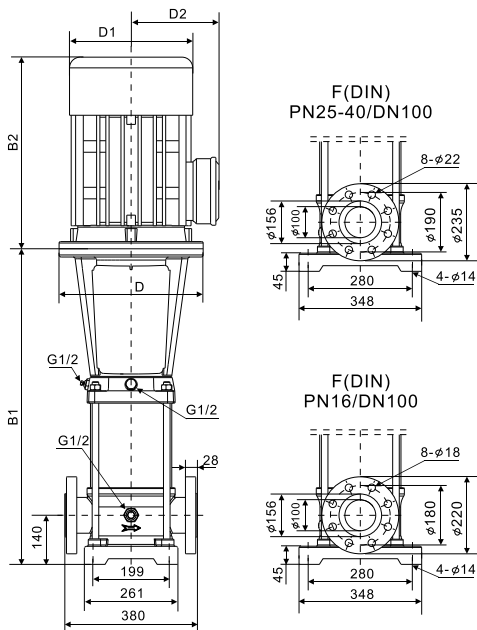
Performance Table

2900 rpm

Model	Motor Power (P ₂)		Q (m ³ /h)	50	60	70	80	85	90	100	110
	kW	HP									
DMV-90/01R1	5.5	7.5	HEAD IN METERS	22	20	18	16	15	13	10	6
DMV-90/01	7.5	10		30	27	25	23	21	19	15	11
DMV-90/02R2	11	15		41	39	36	32	30	28	22	15
DMV-90/02	15	20		56	53	49	45	43	40	35	30
DMV-90/03R2	18.5	25		68	65	60	55	52	49	41	33
DMV-90/03	22	30		83	79	73	67	64	61	54	47
DMV-90/04R2	30	40		98	93	87	80	76	72	62	50
DMV-90/04	30	40		110	105	100	92	88	84	75	65
DMV-90/05R2	37	50		126	120	113	105	100	95	83	68
DMV-90/05	37	50		140	133	126	117	113	107	95	83
DMV-90/06R2	45	60		155	148	139	129	124	118	104	87
DMV-90/06	45	60		168	160	151	141	135	130	117	103

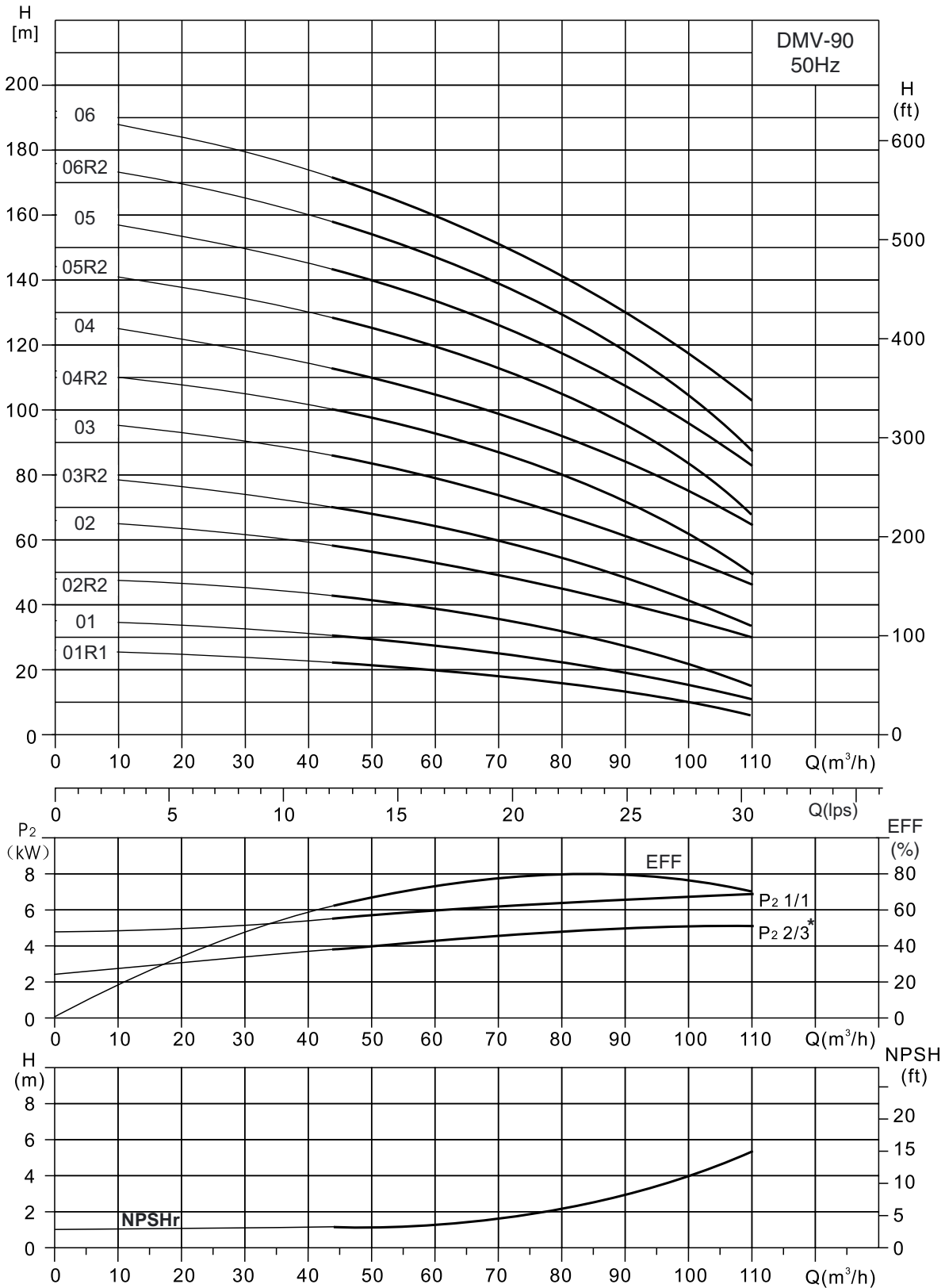
Dimensional Table

Model	Dimensions (mm)						*Weight (kg)
	B1	B2	B1 + B2	D	D1	D2	
DMV-90/01R1	571	430	1001	300	260	208	120
DMV-90/01	571	430	1001	300	260	208	122
DMV-90/02R2	773	490	1263	350	330	255	165
DMV-90/02	773	490	1263	350	330	255	198
DMV-90/03R2	865	550	1415	350	330	255	212
DMV-90/03	865	590	1455	350	360	285	265
DMV-90/04R2	957	660	1417	400	420	310	348
DMV-90/04	957	660	1617	400	420	310	348
DMV-90/05R2	1049	660	1709	400	420	310	375
DMV-90/05	1049	660	1709	400	420	310	375
DMV-90/06R2	1141	700	1841	450	470	345	438
DMV-90/06	1141	700	1841	450	470	345	438



* The given are indicative nett weights only, the actual gross weight will vary according to the packing materials & MoC. The letter C / S / N to be added in model name as 4th letter for Cast Iron, SS 304, SS 316 constructions respectively.

In the view of our continuous developments the given information / description / specifications / illustrations are subject to change without prior notice.



* Trimmed Impeller power.

In the view of our continuous developments the given information / description / specifications / illustrations are subject to change without prior notice.

Range	DMV-1	DMV-2	DMV-3	DMV-4	DMV-5	DMV-10	DMV-15	DMV-20	DMV-32	DMV-45	DMV-64	DMV-90
Nominal Flow [m ³ /h]	1	2	3	4	5	10	15	20	32	45	64	90
Temperature range [°C]	-20~+104											
Temperature range [°C] (High Temperature)	-40~+180											
Max Efficiency [%]	44	45	56	58	65	66	68	69	77	78	80	81
Flow range [m ³ /h]	0.8-2.4	1-3.2	1.2-4.5	1.5-6	2.5-8	5-13	9-24	11-30	15-40	22-55	30-80	45-110
Max Pressure [bar]	22	22	22	22	24	22	24	24	26	30	20	20
High Pressure on request [bar]	47	47	47	47	47	47	47	47	39	40	39	39
Motor power [kW]	0.37-2.2	0.37-3	0.37-3	0.37-4	0.37-5.5	0.37-7.5	1.1-15	1.1-18.5	1.5-30	3-45	4-45	5.5-45
Material type												
DMVC Cast iron, S.S EN1.4301/AISI 304	●	●	●	●	●	●	●	●	●	●	●	●
DMVS EN1.4301/AISI 304	●	●	●	●	●	●	●	●	●	●	●	●
DMVN EN1.4401/AISI 316	●	●	●	●	●	●	●	●	●	●	●	●
pipe connection												
Flange	DN25 DN32	DN25 DN32	DN25 DN32	DN25 DN32	DN25 DN32	DN40	DN50	DN50	DN65	DN80	DN100	DN100
Flange on request	-	-	-	-	-	DN50	-	-	-	-	-	-
Pipe connection												
Pipe size	G1 G1 ¹ / ₄	G1 G1 ¹ / ₄	G1 G1 ¹ / ₄	G1 G1 ¹ / ₄	G1 G1 ¹ / ₄	G2	G2 ¹ / ₂	G2 ¹ / ₂	-	-	-	-
Optional Pipe size on request	G1 ¹ / ₂	G1 ¹ / ₂	G1 ¹ / ₂	G1 ¹ / ₂	G1 ¹ / ₂	-	G2	G2	-	-	-	-
Flange	DN25 DN32	DN25 DN32	DN25 DN32	DN25 DN32	DN25 DN32	DN40	DN50	DN50	DN65	DN80	DN100	DN100
Flange on request	-	-	-	-	-	DN50	-	-	-	-	-	-
PJE coupling	G1 ¹ / ₄ DN32	G1 ¹ / ₄ DN32	G1 ¹ / ₄ DN32	G1 ¹ / ₄ DN32	G1 ¹ / ₄ DN32	G2 DN50	G2 DN50	G2 DN50	-	-	-	-

In the view of our continuous developments the given information / description / specifications / illustrations are subject to change without prior notice.

Motor Electrical Details

EFF2 Motor

Power P ₂ (kW)	Voltage (V)	Current I _n (A)	Power Factor Cos	Efficiency (%)	I _{ST} /I _n
0.37	Δ 220 / Y380	Δ 1.6 / Y 1.0	0.78	70.0	6.2
0.55	Δ 220 / Y 380	Δ 2.5 / Y 1.5	0.81	71.0	6.4
0.75	Δ 220 / Y 380	Δ 3.3 / Y 1.9	0.82	72.0	6.5
1.1	Δ 220 / Y 380	Δ 4.6 / Y 2.7	0.82	76.5	7.2
1.5	Δ 220 / Y 380	Δ 6.2 / Y 3.6	0.83	76.8	7.3
2.2	Δ 220 / Y 380	Δ 8.5 / Y 4.9	0.84	81.1	7.5
3.0	Δ 220 / Y 380	Δ 11.5 / Y 6.7	0.84	81.5	7.5
4.0	Δ 380 / Y 660	Δ 8.2 / Y 4.7	0.88	84.2	7.5
5.5	Δ 380 / Y 660	Δ 11.1 / Y 6.4	0.88	85.7	81
7.5	Δ 380 / Y 660	Δ 14.9 / Y 8.6	0.88	87.0	83
11	Δ 380 / Y 660	Δ 21.2 / Y 12.2	0.89	88.4	8.4
15	Δ 380 / Y 660	Δ 28.6 / Y 16.5	0.89	89.4	8.5
18.5	Δ 380 / Y 660	Δ 34.7 / Y 20.0	0.90	90.0	8.5
22	Δ 380 / Y 660	Δ 41.0 / Y 23.6	0.90	90.5	8.4
30	Δ 380 / Y 660	Δ 55.4 / Y 31.9	0.90	91.4	7.5
37	Δ 380 / Y 660	Δ 67.9 / Y 39.1	0.90	92.0	7.5
45	Δ 380 / Y 660	Δ 82.1 / Y 47.3	0.90	92.5	7.5

le2 Motor

Power P ₂ (kW)	Voltage (V)	Current I _n (A)	Power Factor Cos	Efficiency (%)	I _{ST} /I _n
0.75	Δ 220 / Y 380	Δ 3.1 / Y 1.8	0.83	77.6	6.7
1.1	Δ 220 / Y 380	Δ 4.2 / Y 2.4	0.83	82.9	7.4
1.5	Δ 220 / Y 380	Δ 5.6 / Y 3.2	0.84	84.2	7.7
2.2	Δ 220 / Y 380	Δ 7.9 / Y 4.6	0.85	85.7	7.6
3.0	Δ 220 / Y 380	Δ 10.4 / Y 6.0	0.87	86.8	7.6
4.0	Δ 380 / Y 660	Δ 7.9 / Y 4.5	0.88	87.7	7.6
5.5	Δ 380 / Y 660	Δ 10.7 / Y 6.2	0.88	88.7	7.6
7.5	Δ 380 / Y 660	Δ 14.5 / Y 8.3	0.88	89.6	7.3
11	Δ 380 / Y 660	Δ 21.0 / Y 12.1	0.88	90.6	7.4
15	Δ 380 / Y 660	Δ 28.3 / Y 16.3	0.88	91.4	7.6
18.5	Δ 380 / Y 660	Δ 34.8 / Y 20.0	0.88	91.9	7.7
22	Δ 380 / Y 660	Δ 41.2 / Y 23.7	0.88	92.3	7.6
30	Δ 380 / Y 660	Δ 55.8 / Y 32.1	0.88	92.9	7.1
37	Δ 380 / Y 660	Δ 68.4 / Y 39.4	0.88	93.4	7.1
45	Δ 380 / Y 660	Δ 83.0 / Y 47.8	0.88	93.6	7.1

Motor Mounting

Upto 7.5 kW - Face Mounting
11 kW & Above - Flange Mounting

In the view of our continuous developments the given information / description / specifications / illustrations are subject to change without prior notice.

Certifications



IS 8034:2002



IS 12818:2010



IS 4985:2000



IS 14220:1994



IS 9283:1995



ISO 9001:2008



ISO 14001:2004



GEDA



BEE





Duke Plasto Technique Pvt. Ltd.

N.H.27, Deesa Highway,
Badarpura, Palanpur-385511
(North Gujarat) - India

Phone: +91-2742-280155/156

Fax: +91-2742-280101

email: info@dukeplasto.com

www.dukepumps.com

www.dukeplasto.com